



Western Michigan University
ScholarWorks at WMU

Legacy Scout Tickets from Pure Oil Company

8-20-2021

MGRRE_PureOilScoutTickets_Welch_1_21067027730000

MGRRE

Western Michigan University

Follow this and additional works at: <https://scholarworks.wmich.edu/pure>



Part of the Geology Commons

WMU ScholarWorks Citation

MGRRE, "MGRRE_PureOilScoutTickets_Welch_1_21067027730000" (2021). *Legacy Scout Tickets from Pure Oil Company*. 2795.

<https://scholarworks.wmich.edu/pure/2795>

This Document is brought to you for free and open access via ScholarWorks at WMU. It has been accepted for inclusion in Legacy Scout Tickets from Pure Oil Company by an authorized administrator of ScholarWorks at WMU. See the National Digital Catalogue - Science Base Catalogue for more collections submitted by MGRRE.



MGRRE_PureOilScoutTickets_Welch_1_21067027730000

API 21067027730000

Permit Number 2773

Lease Name Welch

Well Number 1

County Ionia

Township 08N

Range 06W

Section 33

2021 DEQ or Pure co_name Greer and Meals

Pure Number 7

Latitude 43.04254

Longitude -85.02167

DATE September 26, 1935

LOCATION REPORT

No. 7

STATE Michigan COUNTY Ionia DIST. Ronald TWP. Ronald SEC. 33 TOWN 8N RANGE 6W

WELL No. 1 (SERIAL No. 7) FARM John B. Welch #1 ACRES

NAME OF STREAM OR WATERS QUADRANGLE NE-SW-NE
NE-SW-NE

OPERATOR R. A. Greer & S. W. Meals Map Ronald Township, Ionia County

320 320 Feet from North Line of Farm

320 320 " " East " " "

" " South " " "

" " West " " "

1640 1640 Feet from North Line of Section

1640 1640 " " East " " "

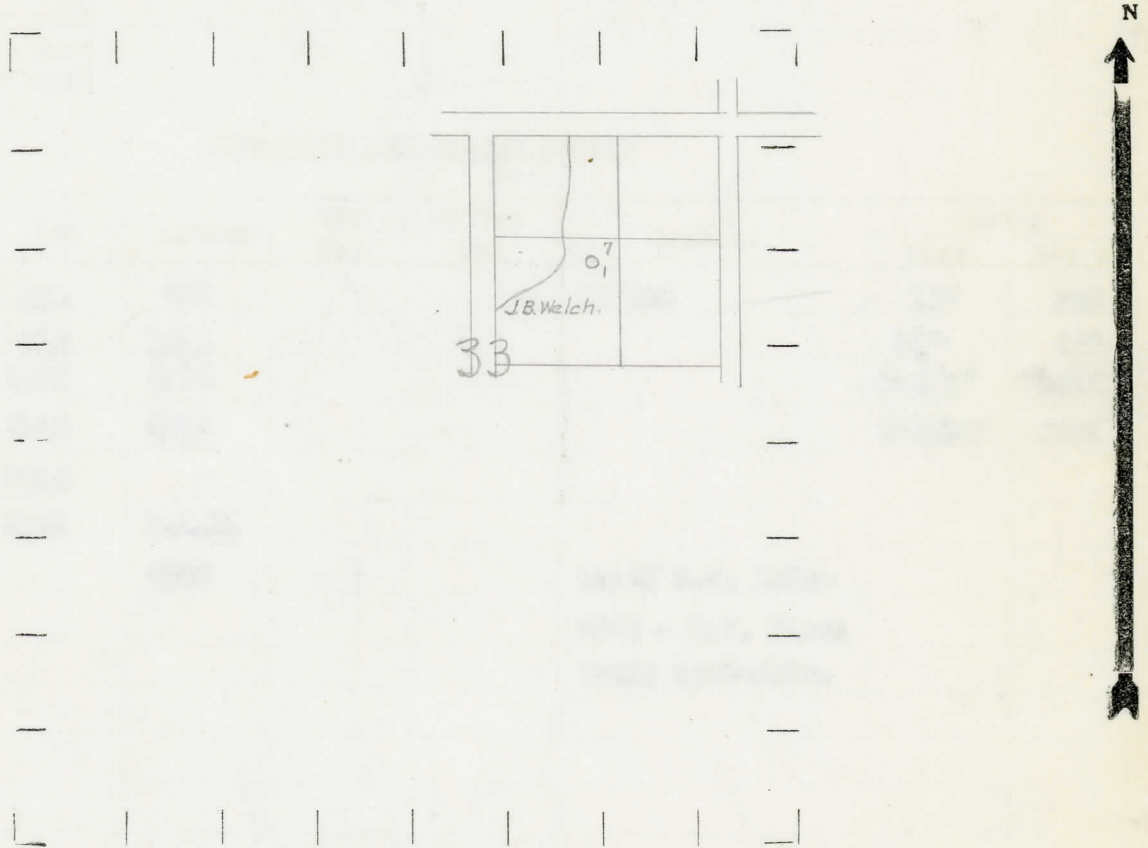
" " South " " "

" " West " " "

LEGEND

- LOCATION
- ⊕ RIG
- ⊕ DRILLING
- ☀ GAS WELL
- OIL WELL
- SMALL OIL WELL
- ⊙ DRY HOLE
- DRY SHOWING OIL
- ☀ DRY SHOWING GAS
- ⊙ ABANDONED LOCATION
- ☀ ABANDONED GAS WELL
- ABANDONED OIL WELL

NOTE: Below make tracing from map, (when no map is obtainable make sketch) showing farm, center of section, this location with measurements and also wells, dry holes, or other locations in the vicinity of this location.



REMARKS:

SIGNED

R. L. Hagan

Superintendent or Foreman.

COMPLETION RECORD OF WELLS DRILLED BY OTHER OPERATORS

Michigan Producing Division

Date 11-20-35 No. 7
 State Mich. County Ionia Dist. Ronald Sec. 33 Twp. 8N Rge. 6 W
 Well No. 1 (Serial No.) (County No.) 7 Farm John B. Welch Acres _____
 Operator Greer-Meals by _____ Information secured from Scouting Dept.
 Date well started 10-18-35 Date well completed 11-24-35 Elevation 795

PRODUCTION RECORD

1st 24 hours natural Dry Hole
 2nd 24 hours natural _____
 Date of shot _____ No. of quarts _____ From _____ to _____ From _____ to _____
 Date of acid _____ No. of gallons _____
 shot _____
 1st 24 hours after acid _____
 shot _____
 2nd 24 hours after acid _____

FORMATION AND CASING RECORD

Formation	Top	Bottom	Top Pay	Bottom Pay	Remarks	Casing	
						Size	Set at
Marshall	800	910			SW 825	10"	532
Red Rock	910	1015				8 1/2"	675
Berea	2102	2115				6-5/8"	1025
Antrim	2115	2516				5-3/16"	2931
Traverse	2516						
Dundee	2923	S.L.M.					
Total Depth		2987			White S.W. 2950-2970 - H.F. Black Water 2970-2987.		

Remarks _____

Signed G.H. Bell