



Western Michigan University
ScholarWorks at WMU

Legacy Scout Tickets from Pure Oil Company

8-20-2021

MGRRE_PureOilScoutTickets_St. Clair_1_21067109850000

MGRRE

Western Michigan University

Follow this and additional works at: <https://scholarworks.wmich.edu/pure>



Part of the Geology Commons

WMU ScholarWorks Citation

MGRRE, "MGRRE_PureOilScoutTickets_St. Clair_1_21067109850000" (2021). *Legacy Scout Tickets from Pure Oil Company*. 2810.

<https://scholarworks.wmich.edu/pure/2810>

This Document is brought to you for free and open access via ScholarWorks at WMU. It has been accepted for inclusion in Legacy Scout Tickets from Pure Oil Company by an authorized administrator of ScholarWorks at WMU. See the National Digital Catalogue - Science Base Catalogue for more collections submitted by MGRRE.



MGRRE_PureOilScoutTickets_St. Clair_1_21067109850000

API 21067109850000

Permit Number 10985

Lease Name St. Clair

Well Number 1

County Ionia

Township 08N

Range 05W

Section 28

2021 DEQ or Pure co_name Maguire, C. L., Incorporated

Pure Number 22

Latitude 43.05172

Longitude -84.90414

THE PURE OIL COMPANY LOCATION REPORT

Date August 16, 1944 A.F.E. No. _____

Division Mich. Producing District _____ Lease St. Clair
St. Clair

Acres _____ Lease No. _____ Elevation _____ Well No. 1 (Serial No. 22)

Quadrangle C S₂ NW SE Sec. 28 Twp. 8 N Rge. 5 W Twp. North Plains
North Plains

Survey _____ County Ionia State Michigan

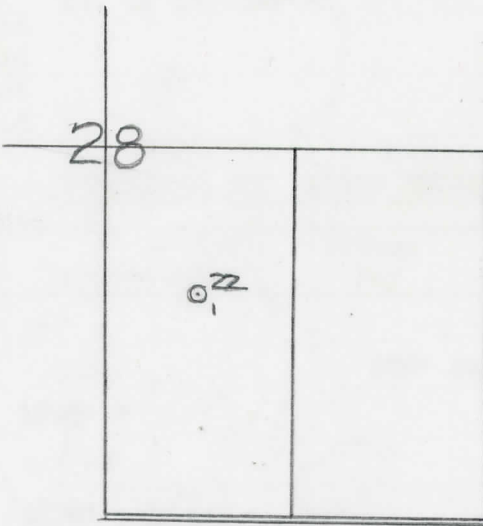
Operator C. L. Maguire, Inc. Map North Plains Township, Ionia County

<u>990</u>	<u>990</u>	Feet from North Line of Lease
		" " East " " "
		" " South " " "
<u>660</u>	<u>660</u>	" " West " " "
<u>990</u>	<u>990</u>	Feet from North Line of Section
		" " East " " "
		" " South " " "
<u>660</u>	<u>660</u>	" " West " " "

Rig

LEGEND

- Location
- ☀ Gas Well
- Oil Well
- ☀ Gas - Distillate Well
- or ○ Dry Hole
- Dry Showing Oil
- ☀ Dry Showing Gas
- ⊗ Abandoned Location
- ☀ or ☀ Abandoned Gas Well
- or ● Abandoned Oil Well
- or ○ Input Well



Scale _____

Remarks: _____

Submitted by EW Civil Engineer Approved by _____ Division Manager
Approved by _____ Vice-President - General Manager

THE PURE OIL COMPANY

The Pure Oil Company

COMPLETION RECORD OF WELLS DRILLED BY OTHER OPERATORS

Michigan Producing Division

Date October 25, 1944 No. 22

State Mich. County Ionia ~~District~~ Twp. North Plains Sec. 28 Twp. 8 N Rge. 5 W

Well No. 1 (~~222222~~) 22 Farm St. Clair Acres _____

Operator C. L. Maguire, Inc. Information secured ~~from~~ By Scouting Department

Date well started 8-15-44 Date well completed 10-19-44 Elevation 791.9

PRODUCTION BOARD

1st 24 hours natural Dry Hole

2nd 24 hours natural _____

Date of shot _____ No. of quarts _____ From _____ to _____ From _____ to _____

Date of acid _____ No. of gallons _____

1st 24 hours after acid shot _____

2nd 24 hours after acid shot _____

FORMATION AND CASING RECORD

Formation	Top	Bottom	Top Pay	Bottom Pay	Remarks	Casing	
						Size	Set at
Brown Dolomite	796'	(-4)				10"	315'
Mich. Stray	818'	(-26)		600'	salt water @ 835'	8-1/4"	752'
Marshall	870'	1070' ?	(-78)		(-43)	6-5/8"	1130'
Cdwtr. Red Rock	2120'	(-1328)				5-3/16"	2946' out
Antrim	2139'	2536'	(-1341)			5-3/16"	3031'
Trav. Lime	2574'	(-1782)					
" " (Alpena)	2595'	S.O.M. (-1802)			Scum oil at 2595' (-1802)		
Dundee	2946'	S.L.M. (-2154)			800' black salt water with small show oil 2972'-2978' (-2110)		
Trav. lime	2536'	(-1744)			Black sulphur water 3005'-3013' (-2212)		
					2300' black sulphur water	3031'-3033'	
Total Depth		3033'	(-2241)			(-2239)	

Remarks 2575 = 91 S.O.M.
2790 = 94 S.L.M.

Signed Dean C. Shackelford