



Western Michigan University
ScholarWorks at WMU

Legacy Scout Tickets from Pure Oil Company

8-20-2021

MGRRE_PureOilScoutTickets_Pierson, R. L._1_21067127130000

MGRRE

Western Michigan University

Follow this and additional works at: <https://scholarworks.wmich.edu/pure>



Part of the Geology Commons

WMU ScholarWorks Citation

MGRRE, "MGRRE_PureOilScoutTickets_Pierson, R. L._1_21067127130000" (2021). *Legacy Scout Tickets from Pure Oil Company*. 2824.

<https://scholarworks.wmich.edu/pure/2824>

This Document is brought to you for free and open access via ScholarWorks at WMU. It has been accepted for inclusion in Legacy Scout Tickets from Pure Oil Company by an authorized administrator of ScholarWorks at WMU. See the National Digital Catalogue - Science Base Catalogue for more collections submitted by MGRRE.



MGRRE_PureOilScoutTickets_Pierson, R. L._1_21067127130000

API 21067127130000

Permit Number 12713

Lease Name Pierson, R. L.

Well Number 1

County Ionia

Township 08N

Range 06W

Section 13

2021 DEQ or Pure co_name McClure Drilling Company The

Pure Number 36

Latitude 43.08431

Longitude -84.96696

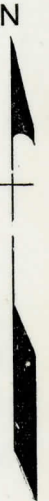
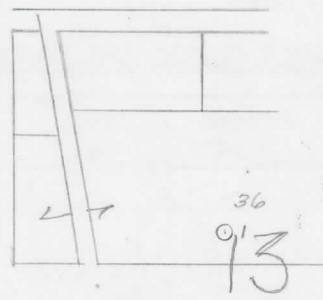
THE PURE OIL COMPANY
LOCATION REPORT

Date 10-30-46 October 30, 1946 A.F.E. No. _____
 Division Mich. Producing District _____ Lease R. L. Pierson
Mich. Producing District _____ Lease R. L. Pierson
 Acres _____ Lease No. _____ Elevation _____ Well No. 1 (Serial No. 36)
 Quadrangle SE SE NW Sec. 13 Twp. 8N Rge. 6W Blk. Dist. Ronald
SE SE NW Sec. 13 Twp. 8N Rge. 6W Blk. Dist. Ronald
 Survey _____ County Ionia State Michigan
 Operator McClure Drilling Co. Map Ronald Township, Ionia County
McClure Drilling Company Map Ronald Township, Ionia County

		Feet from North Line of Lease			
		" "	East	" "	" "
<u>1050</u>	<u>1050</u>	" "	South	" "	" "
<u>2310</u>	<u>2310</u>	" "	West	" "	" "
		Feet from North Line of Section			
		" "	East	" "	" "
<u>330</u>	<u>330</u>	" "	South	" "	" "
<u>330</u>	<u>330</u>	" "	West	" "	" "

LEGEND

- Location
- ☀ Gas Well
- Oil Well
- ☀ Gas-Distillate Well
- or ○ Dry Hole
- Dry Showing Oil
- ☀ Dry Showing Gas
- ⊖ Abandoned Location
- ☀ or ☀ Abandoned Gas Well
- or ● Abandoned Oil Well
- ⊖ or ⊖ Input Well



Scale _____

Remarks: _____

Submitted by CB _____ Approved by _____
 Civil Engineer _____ Division Manager _____
 Approved by _____ Vice-President-General Manager _____

LOCATION RECORD

COMPLETION RECORD OF WELLS DRILLED BY OTHER OPERATORS

Michigan Producing DIVISION

Date December 18, 1946 No. 36
 State Mich. Co. Ionia Dist. Ronald Sec. 13 Twp. 8 N Rge. 6 W
 Well No. 1 Serial No. 36 Farm R. L. Pierson Acres _____
 Operator McClure Drilling Company
 Date started 10-23-46 Date completed 12-16-46 Elevation 767.6

PRODUCTION RECORD

1st 24 hours natural _____
 Date of shot _____ No. of quarts _____ From _____ To _____
 Date of acid _____ No. of gallons shot _____
 1st 24 hours after acid _____
 Completed as: Oil Well _____ Gas Well _____ Dry Hole X

FORMATION AND CASING RECORD

Formation	Top	Bottom	Top Pay	Bottom Pay	Remarks	Casing	
						Size	Set at
Brown Dolomite	808	(-40)				10"	401
Mich. Stray	835	(-67)				8-1/4"	662
Marshall	907	1082	(-139)		H.F.W. 925 to 927.	6-5/8"	1150
Antrim	2134	(-1366)			(-157)		
Traverse Form.	2542	S.L.M.	(-1774)				
Traverse Lime	2586	"	(-1818)		Black salt water		
Dundee	2965	"	(-2197)		(500 ft. in 1 hr.)		
Total Depth		3019	(-2251)		from 2987 to 2994.		
					(-2219)		

Remarks 2540' equals 2540' SLM; 2852' CTM equals 2852' SLM.

Signed Harry J. Gaspeny