



Western Michigan University
ScholarWorks at WMU

Legacy Scout Tickets from Pure Oil Company

8-20-2021

MGRRE_PureOilScoutTickets_Claim #646.67_1_unk

MGRRE

Western Michigan University

Follow this and additional works at: <https://scholarworks.wmich.edu/pure>



Part of the Geology Commons

WMU ScholarWorks Citation

MGRRE, "MGRRE_PureOilScoutTickets_Claim #646.67_1_unk" (2021). *Legacy Scout Tickets from Pure Oil Company*. 2827.

<https://scholarworks.wmich.edu/pure/2827>

This Document is brought to you for free and open access via ScholarWorks at WMU. It has been accepted for inclusion in Legacy Scout Tickets from Pure Oil Company by an authorized administrator of ScholarWorks at WMU. See the National Digital Catalogue - Science Base Catalogue for more collections submitted by MGRRE.



MGRRE_PureOilScoutTickets_Claim #646.67_1_unk

API unk

Permit Number unk

Lease Name Claim #646.67

Well Number 1

County losco

Township 23N

Range 09E

Section 3

2021 DEQ or Pure co_name losco Brine Co

Pure Number 3

Latitude 44.4172601

Longitude -83.3331038

THE PURE OIL COMPANY

DATE June 16th 1928 LOCATION REPORT No. 3
 STATE Michigan COUNTY Losco DIST. Au Sable SEC. 3 TOWN 23N RANGE 9E
 WELL No. 1 (SERIAL No. 3) FARM Claim # 646.67 ACRES
 NAME OF STREAM OR WATERS Au Sable River QUADRANGLE
 OPERATOR Losco Brine Co MAP Au Sable Exp Losco Co

Feet from North Line of Farm

" " East " " "

" " South " " "

" " West " " "

Feet from North Line of Section

" " East " " "

" " South " " "

" " West " " "

LEGEND

O LOCATION

① RIG

⊕ DRILLING

⊗ GAS WELL

● OIL WELL

⬮ SMALL OIL WELL

⊗ DRY HOLE

⬮ DRY SHOWING OIL

⊗ DRY SHOWING GAS

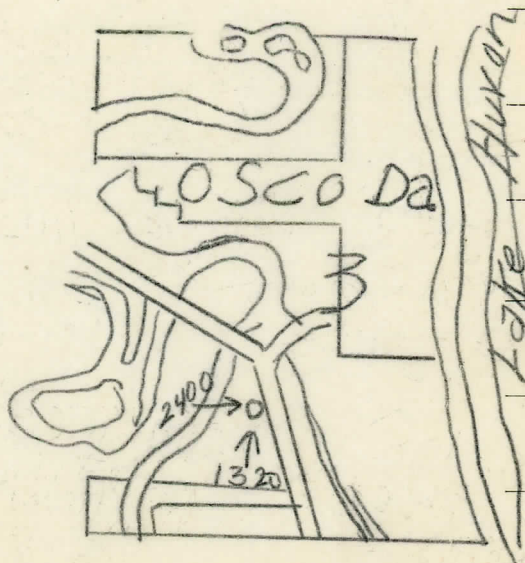
⊗ ABANDONED LOCATION

⬮ ABANDONED GAS WELL

⬮ ABANDONED OIL WELL

NOTE: Below make tracing from map (when no map is obtainable make sketch), showing farm, center of section, this location with measurements and also wells, dry holes, or other locations in the vicinity of this location. Make copy to keep for reference and send original to Columbus office.

Elevation

585

N

REMARKS:

SIGNED

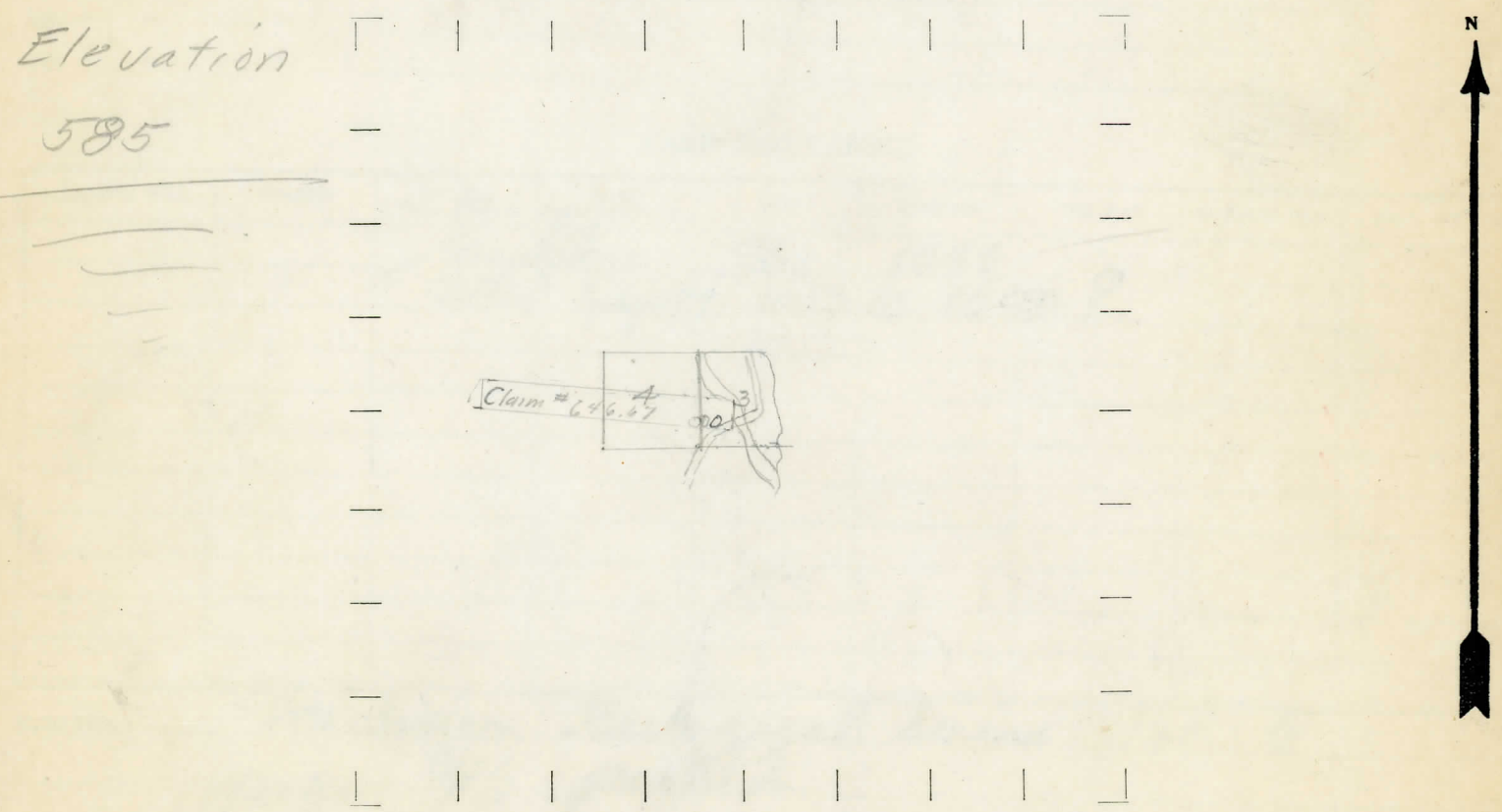
Superintendent or Foreman.

STATE Mich COUNTY Iosco DIST. Twp. Ausable Prec. SEC. 3 TOWN 231V RANGE 9E
WELL No. (SERIAL No. 3) FARM Claim # 646.67 ACRES
NAME OF STREAM OR WATERS Ausable River QUADRANGLE
OPERATOR Iosco Brine Co. MAP 1 1/2" = 1 mi.

Feet from North Line of Farm
" " East " " "
" " South " " "
" " West " " "
Feet from North Line of Section
" " East " " "
1320 " " South " " "
2400 " " West " " "

- LEGEND
- O LOCATION
 - ① RIG
 - ⊕ DRILLING
 - ⊗ GAS WELL
 - OIL WELL
 - ⬮ SMALL OIL WELL
 - ⊗ DRY HOLE
 - ⬮ DRY SHOWING OIL
 - ⊗ DRY SHOWING GAS
 - ⊗ ABANDONED LOCATION
 - ⊗ ABANDONED GAS WELL
 - ⬮ ABANDONED OIL WELL

NOTE: Below make tracing from map (when no map is obtainable make sketch), showing farm, center of section, this location with measurements and also wells, dry holes, or other locations in the vicinity of this location. Make copy to keep for reference and send original to Columbus office.



REMARKS:

SIGNED
Superintendent or Foreman.

DESCRIPTION	QUANTITY	MAKE	SIZE	MATERIAL
-------------	----------	------	------	----------

LIST OF MATERIAL CHARGEABLE TO WELL No.

U of S, pp 75, pt 2

sandstone 960-1040

Total Depth 1103 or 1070'