



Western Michigan University
ScholarWorks at WMU

Legacy Scout Tickets from Pure Oil Company

8-20-2021

**MGRRE_PureOilScoutTickets_Miller, Edward
A_1_21069007720000**

MGRRE
Western Michigan University

Follow this and additional works at: <https://scholarworks.wmich.edu/pure>



Part of the Geology Commons

WMU ScholarWorks Citation

MGRRE, "MGRRE_PureOilScoutTickets_Miller, Edward A_1_21069007720000" (2021). *Legacy Scout Tickets from Pure Oil Company*. 2833.
<https://scholarworks.wmich.edu/pure/2833>

This Document is brought to you for free and open access via ScholarWorks at WMU. It has been accepted for inclusion in Legacy Scout Tickets from Pure Oil Company by an authorized administrator of ScholarWorks at WMU. See the National Digital Catalogue - Science Base Catalogue for more collections submitted by MGRRE.



MGRRE_PureOilScoutTickets_Miller, Edward A_1_21069007720000

API 21069007720000

Permit Number 772

Lease Name Miller, Edward A

Well Number 1

County Iosco

Township 22N

Range 05E

Section 31

2021 DEQ or Pure co_name Oryx Energy Company

Pure Number 9

Latitude 44.26178

Longitude -83.87161

DATE August 31, 1929THE PURE OIL COMPANY
LOCATION REPORTNo. 9.

STATE Michigan COUNTY Iosco DIST. Reno SEC. 31 TOWN 22N RANGE 5E
 WELL No. #1 (SERIAL No. 9.) FARM Edward A. Miller ACRES
 NAME OF STREAM OR WATERS QUADRANGLE NW $\frac{1}{4}$ - NE $\frac{1}{4}$
 OPERATOR Sun Oil Company MAP Iosco County, Reno Township

300' Feet from North Line of Farm

" " East " " "

" " South " " "

300' " " West " " "

300' Feet from North Line of Section

2340' " " East " " "

" " South " " "

" " West " " "

LEGEND

O LOCATION

① RIG

⊕ DRILLING

⊗ GAS WELL

● OIL WELL

⊙ SMALL OIL WELL

⬢ DRY HOLE

⬢ DRY SHOWING OIL

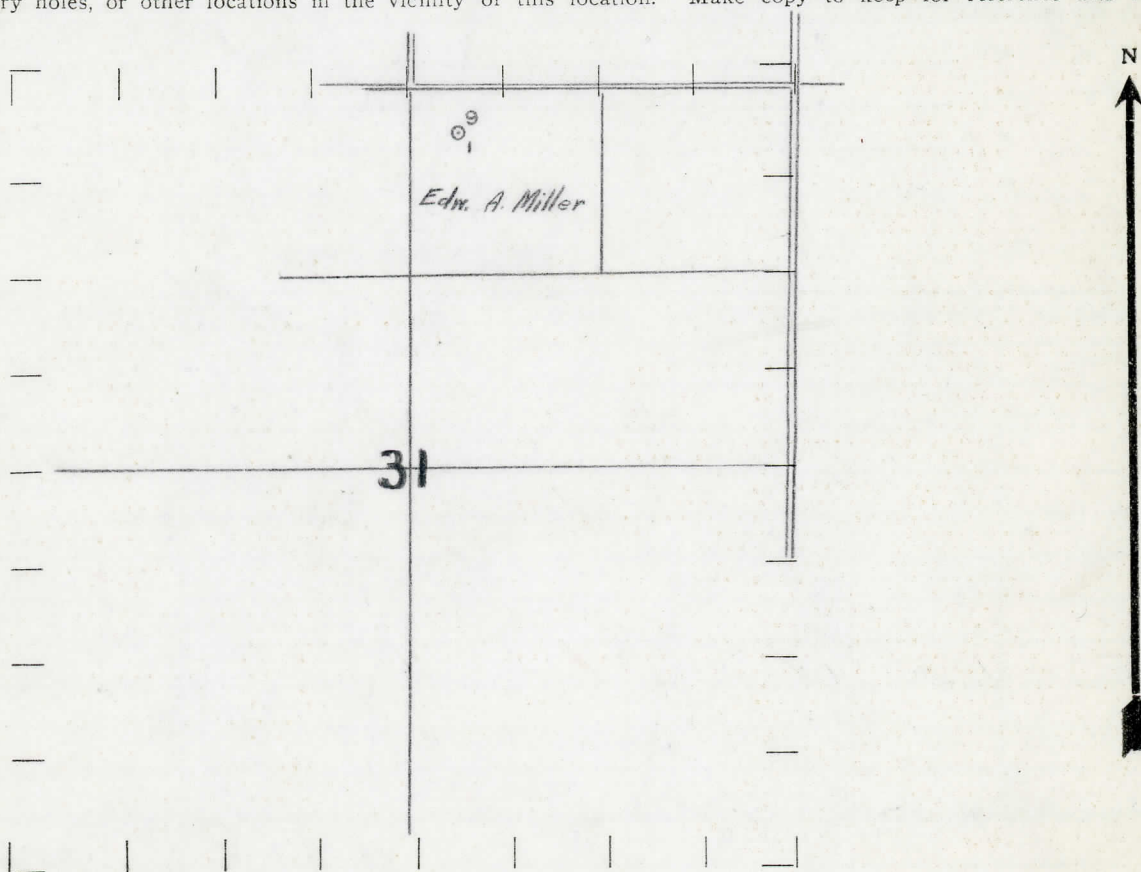
⬢ DRY SHOWING GAS

⬢ ABANDONED LOCATION

⬢ ABANDONED GAS WELL

⬢ ABANDONED OIL WELL

NOTE: Below make tracing from map, (when no map is obtainable make sketch) showing farm, center of section, this location with measurements and also wells, dry holes, or other locations in the vicinity of this location. Make copy to keep for reference and send original to Columbus office.



REMARKS:

SIGNED

Superintendent or Foreman.

Michigan Producing DIVISION
DATE Dec. 21st, 1929. COMPLETION RECORD No. -9-

STATE Michigan COUNTY Iosco DIST. Reno SEC. 31 TOWN 22 N RANGE 5 E
TWP. Reno
PREC.

WELL No. 1 (SERIAL No. 9) FARM E.A. Miller ACRES

NAME OF STREAM OR WATERS _____ QUADRANGLE _____

OPERATOR Sun Oil Co. MAP

LOCATION REPORT SENT IN (DATE) September 1929.

WELL STARTED (DATE) September 1929. WELL COMPLETED (DATE) Dec. 21st, 1929.

QICVEND

COSWELL

DRY HOLE

ABANDONED WELL

CROSS OUT THREE OF THE ABOVE
WELL RECORD

DATE OF SHOT _____ NUMBER OF QUARTS _____

1st 24 HOURS PRODUCTION _____ BARRELS OR FEET

[illegible][illegible]

4th " " " " " "

5th " " " " " "

SAND AND CASING

[illegible]

REMARKS	See log attached.				
---------	-------------------	--	--	--	--

NOTE:—MAKE COPY TO KEEP FOR REFERENCE AND SEND ORIGINAL TO CHICAGO OFFICE. LIST MATERIAL CHARGEABLE TO WELL ON OTHER SIDE.

SIGNED _____ SUPT. OR FOREMAN

SUN OIL CO. #1,

E.A. Miller

Our #9.

Drift	0	118	
Limestone	118	168	
Marshall	168	263	
Red Marshall	263	275	
Lght. "	275	303	
Red rock	303	338	
Blue shale	338	363	
Red rock	363	405	
Blue shale	405	485	
Red rock	485	530	
Blue shale	530	540	
Red rock	540	545	water at 730'
Blue shale	545	1192	" 1230- 1267'
Salt sand	1192	1267	
Shale	1267	1468	
Shell	1468	1508	
Blue shale	1508	1525	
Red shale	1525	1531	
Blue shale	1531	1542	
Black shale	1542	1580	
Berea	1580	1703	
Blue shale	1703	1742	
Br. shale	1742	2042	
Black shale, shp.	2042	2158	
Traverse	2158	2172	
Shale	2172	2284	
Shale shell	2284	2354	
Shells, hard	2354	2370	
Shale shell	2370	2412	
Solid	2412	2550	
Shale shell	2550	2635	
Shell, hard	2635	2654	
Blue shale	2654	2795	
Shell	2795	2800	
Shale shell	2800	2920	
Dundee	2920	3151	Water, about 250' in 3 hrs.
"	3151	3163	

T.D. 3163' plugging.

CASING RECORD

10"	168'
8"	525'
6 $\frac{1}{4}$ "	1275'