



Western Michigan University
ScholarWorks at WMU

Legacy Scout Tickets from Pure Oil Company

8-20-2021

MGRRE_PureOilScoutTickets_Cleveland Stock Co_1_unk

MGRRE

Western Michigan University

Follow this and additional works at: <https://scholarworks.wmich.edu/pure>



Part of the Geology Commons

WMU ScholarWorks Citation

MGRRE, "MGRRE_PureOilScoutTickets_Cleveland Stock Co_1_unk" (2021). *Legacy Scout Tickets from Pure Oil Company*. 2834.

<https://scholarworks.wmich.edu/pure/2834>

This Document is brought to you for free and open access via ScholarWorks at WMU. It has been accepted for inclusion in Legacy Scout Tickets from Pure Oil Company by an authorized administrator of ScholarWorks at WMU. See the National Digital Catalogue - Science Base Catalogue for more collections submitted by MGRRE.



MGRRE_PureOilScoutTickets_Cleveland Stock Co_1_unk

API unk

Permit Number unk

Lease Name Cleveland Stock Co

Well Number 1

County losco

Township 23N

Range 05E

Section 27

2021 DEQ or Pure co_name Sun Oil Co. Cr. Tst.

Pure Number 10

Latitude 44.356275

Longitude -83.8145871

THE PURE OIL COMPANY

LOCATION REPORT

No. 10

DATE Sept 26th 1929STATE Mich COUNTY 10500 DIST. Plainfield TWP. 27 SEC. 23N RANGE 5EWELL No. 1 (SERIAL No. 10) FARM Cleveland Stock Co ACRES

NAME OF STREAM OR WATERS QUADRANGLE

OPERATOR Sun Oil Co MAPFeet from North Line of Farm
TEST HOLE

" " East " " "

" " South " " "

" " West " " "

Feet from North Line of Section

" " East " " "

" " South " " "

" " West " " "

2540

20

LEGEND

O LOCATION

① RIG

⊕ DRILLING

⊗ GAS WELL

● OIL WELL

⬮ SMALL OIL WELL

⬮ DRY HOLE

⬮ DRY SHOWING OIL

⬮ DRY SHOWING GAS

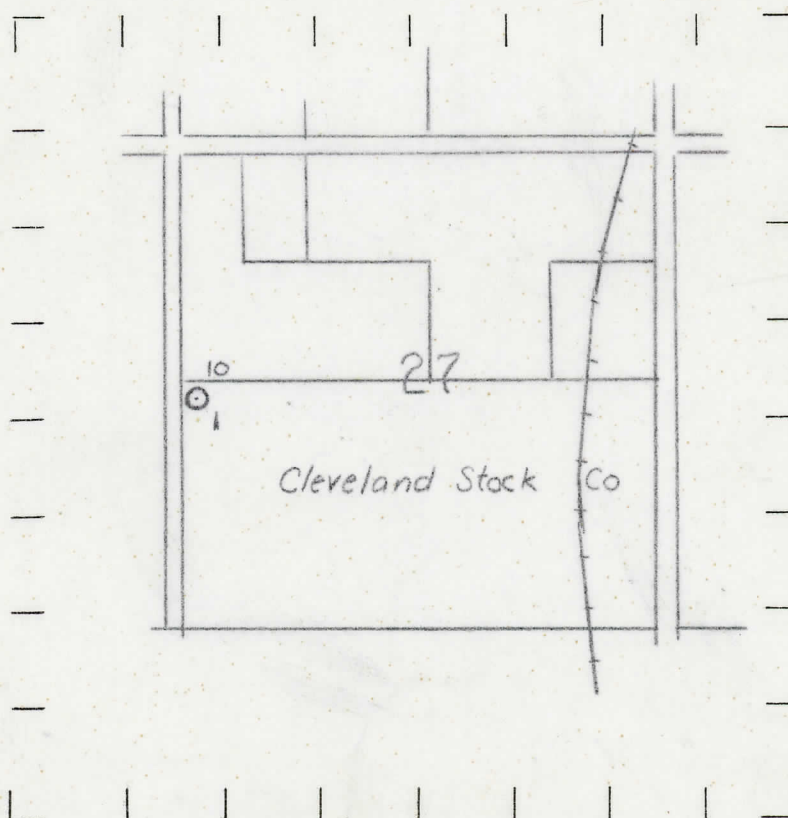
⬮ ABANDONED LOCATION

⬮ ABANDONED GAS WELL

⬮ ABANDONED OIL WELL

NOTE: Below make tracing from map, (when no map is obtainable make sketch) showing farm, center of section, this location with measurements and also wells, dry holes, or other locations in the vicinity of this location. Make copy to keep for reference and send original to Columbus office.

Elev 863



REMARKS: 0-173 Drift, - 173-356 Mich Series, - 356-380 Marshall
T.D. = 380

SIGNED

W.E. Hayton
 Superintendent or Foreman.

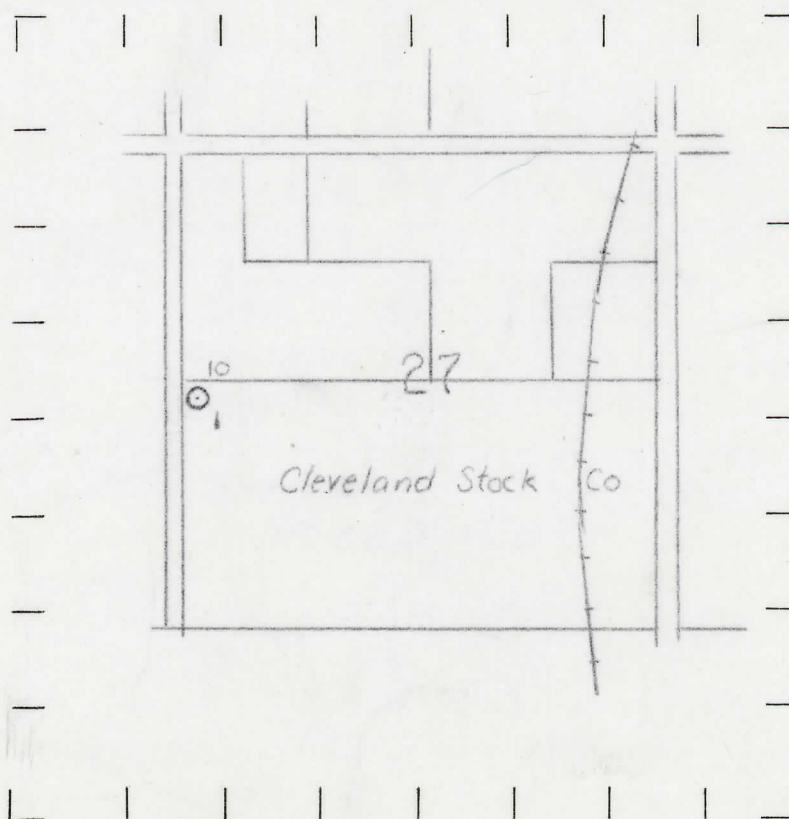
NAME OF ELEVATOR OR MILLER _____ THE PURE OIL COMPANY _____ QUADRANGLE _____
 NAME No. _____ (SERIAL No. _____) EVEN _____ VCHES _____
 DATE _____ LREC _____
 STATE _____ COUNTY _____ DIST. _____ SEC. _____ TOWN _____ RANGE _____
 WELLS No. _____ (SERIAL No. _____) FARM _____ ACRES _____
 NAME OF STREAM OR WATERS _____ QUADRANGLE _____
 OPERATOR _____ MAP _____

TEST HOLE
 Feet from North Line of Farm
 " " East " " "
 " " South " " "
 " " West " " "
 Feet from North Line of Section
 " " East " " "
 2540 " " South " " "
 20 " " West " " "

LEGEND

○ LOCATION	✦ DRY HOLE
① RIG	✦ DRY SHOWING OIL
⊕ DRILLING	✦ DRY SHOWING GAS
⊙ GAS WELL	✦ ABANDONED LOCATION
● OIL WELL	✦ ABANDONED GAS WELL
⬮ SMALL OIL WELL	✦ ABANDONED OIL WELL

NOTE: Below make tracing from map, (when no map is obtainable make sketch) showing farm, center of section, this location with measurements and also wells, dry holes, or other locations in the vicinity of this location. Make copy to keep for reference and send original to Columbus office.



REMARKS: 0-173 Drift - 173-356 Mich Series, - 356-380 Marshall
 T.D. = 380

SIGNED

Superintendent or Foreman.

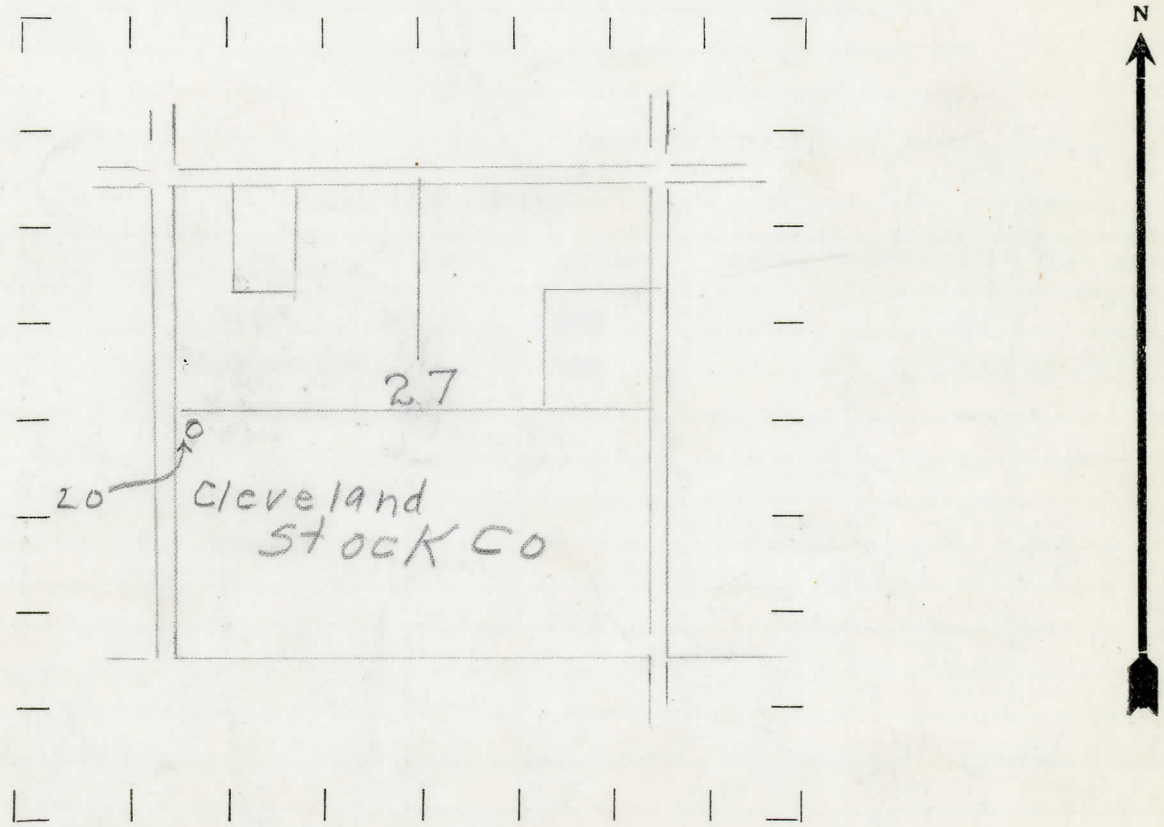
STATE Mich COUNTY Inoco DIST. W.P. Plainfield SEC. 27 TOWN 23N RANGE 5E
 WELL No. 1 (SERIAL No. 10) FARM Cleveland Stock Co ACRES _____
 NAME OF STREAM OR WATERS _____ QUADRANGLE _____
 OPERATOR Sum Oil Co. (Con Test) MAP _____

_____ Feet from North Line of Farm
 _____ " " East " " "
 _____ " " South " " "
 _____ " " West " " "
 _____ Feet from North Line of Section
 _____ " " East " " "
2540 " " South " " "
20 " " West " " "

- LEGEND**
- O LOCATION
 - ① RIG
 - ⊕ DRILLING
 - ⊙ GAS WELL
 - OIL WELL
 - ⦿ SMALL OIL WELL
 - ⊕ DRY HOLE
 - ⊙ DRY SHOWING OIL
 - ⊙ DRY SHOWING GAS
 - ⊕ ABANDONED LOCATION
 - ⊙ ABANDONED GAS WELL
 - ⦿ ABANDONED OIL WELL

NOTE: Below make tracing from map, (when no map is obtainable make sketch) showing farm, center of section, this location with measurements and also wells, dry holes, or other locations in the vicinity of this location. Make copy to keep for reference and send original to Columbus office.

Clew
863



REMARKS: 0-173 Drift, 173 to 356 Mich series, 356-380
marshale TD 380

SIGNED _____
 Superintendent or Foreman.

Form 243 10M 6-19-29 P100 POCO

THE PURE OIL COMPANY

Michigan Producing DIVISION
COMPLETION RECORD

DATE Oct. 5th, 1929.

No. -10-

STATE Michigan COUNTY Iosco DIST. Plainfield SEC. 27 TOWN 23 N RANGE 5 E
TWP. Plainfield PREC. _____

WELL No. 1 (SERIAL No. 10) FARM Cleveland Stock Co. ACRES _____

NAME OF STREAM OR WATERS _____ QUADRANGLE _____

OPERATOR Sun Oil Co. MAP

LOCATION REPORT SENT IN (DATE) September 26th, 1929.

WELL STARTED (DATE) 37 WELL COMPLETED (DATE) Oct. 5th. 1922.

QUAWELL

CASE NO. 1

JOSEPH HOLT

ABANDONED WELL

CROSS OUT THREE OF THE ABOVE

TEST HOLE

WELL RECORD

DATE OF SHOT _____ NUMBER OF QUARTS _____

1st 24 HOURS PRODUCTION		BARRELS OR FEET
1	2	3
4	5	6
7	8	9
10	11	12
13	14	15
16	17	18
19	20	21
22	23	24
25	26	27
28	29	30
31	32	33
34	35	36
37	38	39
40	41	42
43	44	45
46	47	48
49	50	51
52	53	54
55	56	57
58	59	60
61	62	63
64	65	66
67	68	69
70	71	72
73	74	75
76	77	78
79	80	81
82	83	84
85	86	87
88	89	90
91	92	93
94	95	96
97	98	99
100	101	102
103	104	105
106	107	108
109	110	111
112	113	114
115	116	117
118	119	120
121	122	123
124	125	126
127	128	129
130	131	132
133	134	135
136	137	138
139	140	141
142	143	144
145	146	147
148	149	150
151	152	153
154	155	156
157	158	159
160	161	162
163	164	165
166	167	168
169	170	171
172	173	174
175	176	177
178	179	180
181	182	183
184	185	186
187	188	189
190	191	192
193	194	195
196	197	198
199	200	201
202	203	204
205	206	207
208	209	210
211	212	213
214	215	216
217	218	219
220	221	222
223	224	225
226	227	228
229	230	231
232	233	234
235	236	237
238	239	240
241	242	243
244	245	246
247	248	249
250	251	252
253	254	255
256	257	258
259	260	261
262	263	264
265	266	267
268	269	270
271	272	273
274	275	276
277	278	279
280	281	282
283	284	285
286	287	288
289	290	291
292	293	294
295	296	297
298	299	300
301	302	303
304	305	306
307	308	309
310	311	312
313	314	315
316	317	318
319	320	321
322	323	324
325	326	327
328	329	330
331	332	333
334	335	336
337	338	339
340	341	342
343	344	345
346	347	348
349	350	351
352	353	354
355	356	357
358	359	360
361	362	363
364	365	366

[illegible][illegible][illegible]

5th " " " " " "

SAND AND CASING

[illegible]

REMARKS

NOTE:—MAKE COPY TO KEEP FOR REFERENCE AND SEND ORIGINAL TO CHICAGO OFFICE. LIST MATERIAL CHARGEABLE TO WELL ON OTHER SIDE.

SIGNED _____

SUPT. OR FOREMAN