



Western Michigan University
ScholarWorks at WMU

Legacy Scout Tickets from Pure Oil Company

8-20-2021

MGRRE_PureOilScoutTickets_Hill_1_21069008920000

MGRRE

Western Michigan University

Follow this and additional works at: <https://scholarworks.wmich.edu/pure>



Part of the Geology Commons

WMU ScholarWorks Citation

MGRRE, "MGRRE_PureOilScoutTickets_Hill_1_21069008920000" (2021). *Legacy Scout Tickets from Pure Oil Company*. 2837.

<https://scholarworks.wmich.edu/pure/2837>

This Document is brought to you for free and open access via ScholarWorks at WMU. It has been accepted for inclusion in Legacy Scout Tickets from Pure Oil Company by an authorized administrator of ScholarWorks at WMU. See the National Digital Catalogue - Science Base Catalogue for more collections submitted by MGRRE.



MGRRE_PureOilScoutTickets_Hill_1_21069008920000

API 21069008920000

Permit Number 892

Lease Name Hill

Well Number 1

County Iosco

Township 22N

Range 05E

Section 19

2021 DEQ or Pure co_name Wilson, D. E.

Pure Number 13

Latitude 44.27774

Longitude -83.8746

THE PURE OIL COMPANY

LOCATION REPORT

No. 13

DATE Jan. 17, 1930

STATE Michigan COUNTY Iosco DIST. Reno TWP. SEC. 19 TOWN 22 N RANGE 5E

WELL No. 1 (SERIAL No. 13) FARM W. T. Hill ACRES

NAME OF STREAM OR WATERS QUADRANGLE SE SW

OPERATOR D. E. Wilson, Trustee MAP Reno Twp. Iosco County

Feet from North Line of Farm

330 " " East " " "

330 " " South " " "

" " West " " "

Feet from North Line of Section

" " East " " "

330 " " South " " "

2310 " " West " " "

LEGEND

O LOCATION

① RIG

⊕ DRILLING

⊗ GAS WELL

● OIL WELL

⬮ SMALL OIL WELL

⬮ DRY HOLE

⬮ DRY SHOWING OIL

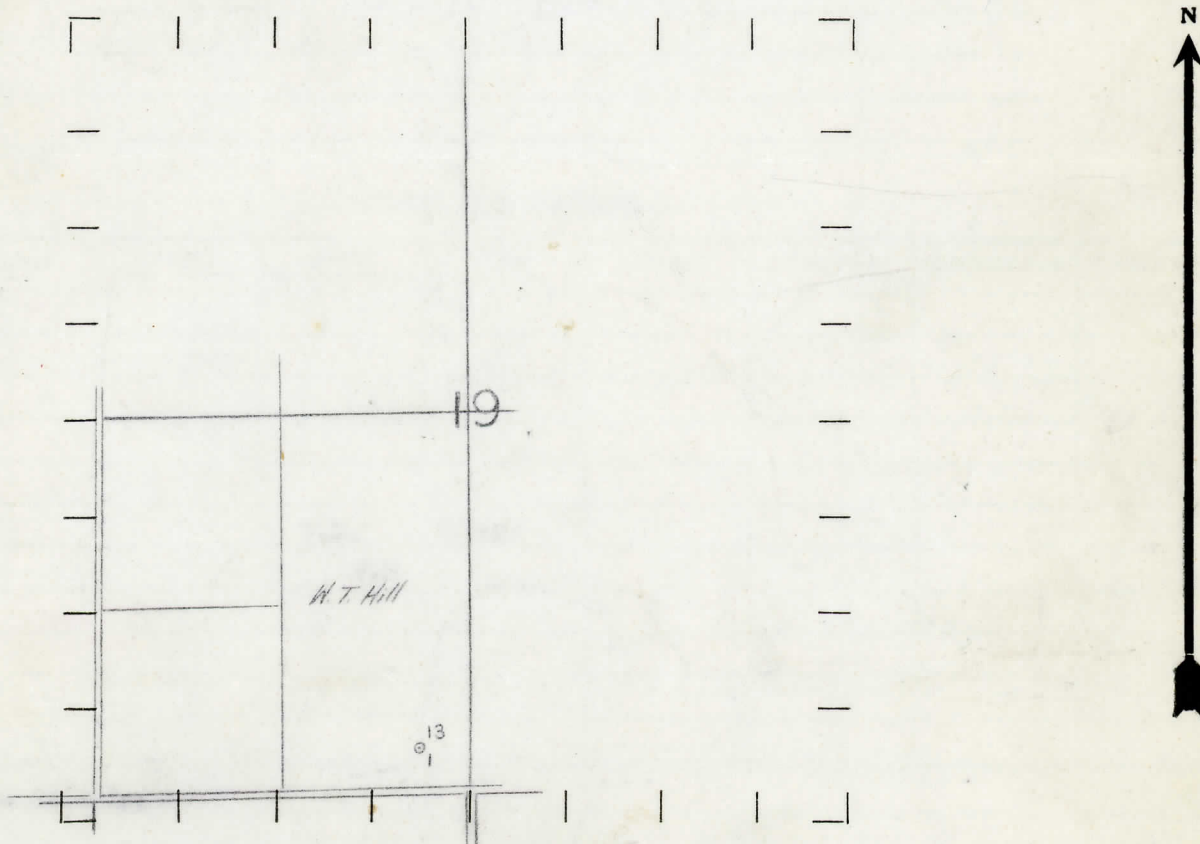
⬮ DRY SHOWING GAS

⬮ ABANDONED LOCATION

⬮ ABANDONED GAS WELL

⬮ ABANDONED OIL WELL

NOTE: Below make tracing from map, (when no map is obtainable make sketch) showing farm, center of section, this location with measurements and also wells, dry holes, or other locations in the vicinity of this location. Make copy to keep for reference and send original to Columbus office.



REMARKS:

SIGNED

Superintendent or Foreman.

L.W.
Twp. Map 8th
Twp. Map 8th V

Michigan Producing DIVISION COMPLETION RECORD

No. -13-

STATE Michigan COUNTY Iosco DIST. Reno SEC. 19 TOWN 22 N RANGE 5 E
TWP. PREC.

WELL No. 1 (SERIAL No. 13) FARM W.T.Hill ACRES

NAME OF STREAM OR WATERS	QUADRANGLE
--------------------------	------------

OPERATOR D.E.Wilson, trustee MAP Reno Twp., Josco Co.

LOCATION REPORT SENT IN (DATE) January 17th, 1930.

WELL STARTED (DATE) January 1930. WELL COMPLETED (DATE) July 12th, 1930. (6/14/30)

ABANDONED WHEEL

DATE OF SHOT _____ NUMBER OF QUARTS _____

1st 24 HOURS PRODUCTION dry BARRELS OR FEET

[illegible][illegible][illegible]

5th " " " " " "

Additional Experiment

REMARKS	See log attached.				
---------	-------------------	--	--	--	--

SIGNED _____ SUPT. OR FOREMAN

SUPT. OR FOREMAN

WILSON, TRUSTEE -
W.T. HILL, #1,
IOSCO CO., RENO TWP.
OUR # 13.

Elev. 723'

Clay & sand	0	80
Sand	80	90
Slate, sft.	90	125
Lime, water	125	130
Lime shells & slate	130	220
Sand (Marshall)	220	265
Lime, shale, broken	265	280
Sand, white, (Marshall)	280	345
Red sand	345	360
Blue shale	360	405
Red shale	405	415
Blue shale	415	440
Red shale	440	480
Blue shale	480	518
Red shale	518	528
Blue shale	528	540
Red shale	540	570
Blue shale	570	580
Red shale	580	612
Blue shale	612	617
Red shale	617	630
Blue shale, (water)	630	767
" "	767	770
Red shale	770	776
Blue shale	776	1190
Shale & lime shells	1190	1290
Lime	1290	1310
Sand (water)	1310	1360
Blue shale	1360	1533
Sand (dry)	1533	1590
Blue shale	1590	1600
Red shale	1600	1610
Blue shale	1610	1614
Lime shell	1614	1618
Brown shale	1618	1652
Sand (Berea grit)	1652	1682
Blue shale	1682	1800
Brown shale	1800	2093
Brown lime	2093	2100
Gray shale	2100	2112
Brown shale	2112	2150
Black shale	2150	2160
Brown lime	2160	2198
Gray shale	2190	2198
Brown lime (water)	2198	2210
Gray lime	2210	2234
Gray shale	2234	2346
Gray lime	2346	2396
Lime shell	2396	2400
Gray lime	2400	2430
Gray shale	2430	2472
Gray lime, hard	2472	2540
White lime	2540	2570

-1632
2132

2148
507
1391

-cont.-

SW

Gray lime	2570	2612
Shale & shells	2612	2712
Gray shale	2712	2825
Lime	2825	2850
Gray shale	2850	2976
Lime (Dundee) hard	2976	3156

TOTAL DEPTH

3156'

water-3156'

Monroe water.

Remarks:

Water & gas at 2210' water runs over top.

Dundee very hard. From 3027 to 3077' the lime was brown and looked good but was too hard to contain anything.

10"	130'
8 $\frac{1}{4}$ "	431'
6 $\frac{1}{4}$ "	2280'