



Western Michigan University  
ScholarWorks at WMU

---

Legacy Scout Tickets from Pure Oil Company

---

8-20-2021

**MGRRE\_PureOilScoutTickets\_Watts\_1\_21069010110000**

MGRRE

*Western Michigan University*

Follow this and additional works at: <https://scholarworks.wmich.edu/pure>



Part of the Geology Commons

---

#### WMU ScholarWorks Citation

MGRRE, "MGRRE\_PureOilScoutTickets\_Watts\_1\_21069010110000" (2021). *Legacy Scout Tickets from Pure Oil Company*. 2838.

<https://scholarworks.wmich.edu/pure/2838>

This Document is brought to you for free and open access via ScholarWorks at WMU. It has been accepted for inclusion in Legacy Scout Tickets from Pure Oil Company by an authorized administrator of ScholarWorks at WMU. See the National Digital Catalogue - Science Base Catalogue for more collections submitted by MGRRE.



---

**MGRRE\_PureOilScoutTickets\_Watts\_1\_21069010110000**

API 21069010110000

Permit Number 1011

Lease Name Watts

Well Number 1

County losco

Township 22N

Range 06E

Section 34

2021 DEQ or Pure co\_name Gibson Johnson and Borden, Incorporated and Dixie Oil Company

Pure Number 14

Latitude 44.25825

Longitude -83.69834

THE PURE OIL COMPANY  
LOCATION REPORT

No. 14

DATE June 27, 1930

STATE Michigan COUNTY Iosco DIST. Grant SEC. 34 TOWN 22N RANGE 6E

WELL No. 1 (SERIAL No. 14) FARM Rob't H. Watts ACRES

NAME OF STREAM OR WATERS QUADRANGLE S $\frac{1}{2}$  - NW $\frac{1}{4}$

OPERATOR Gibson - Johnson - Borden MAP Grant Twp. Iosco County

Feet from North Line of Farm

" " East " " "

660 " " South " " "

1320 " " West " " "

1980 Feet from North Line of Section

" " East " " "

" " South " " "

1320 " " West " " "

LEGEND

○ LOCATION

① RIG

⊕ DRILLING

⊙ GAS WELL

● OIL WELL

⦿ SMALL OIL WELL

✧ DRY HOLE

✦ DRY SHOWING OIL

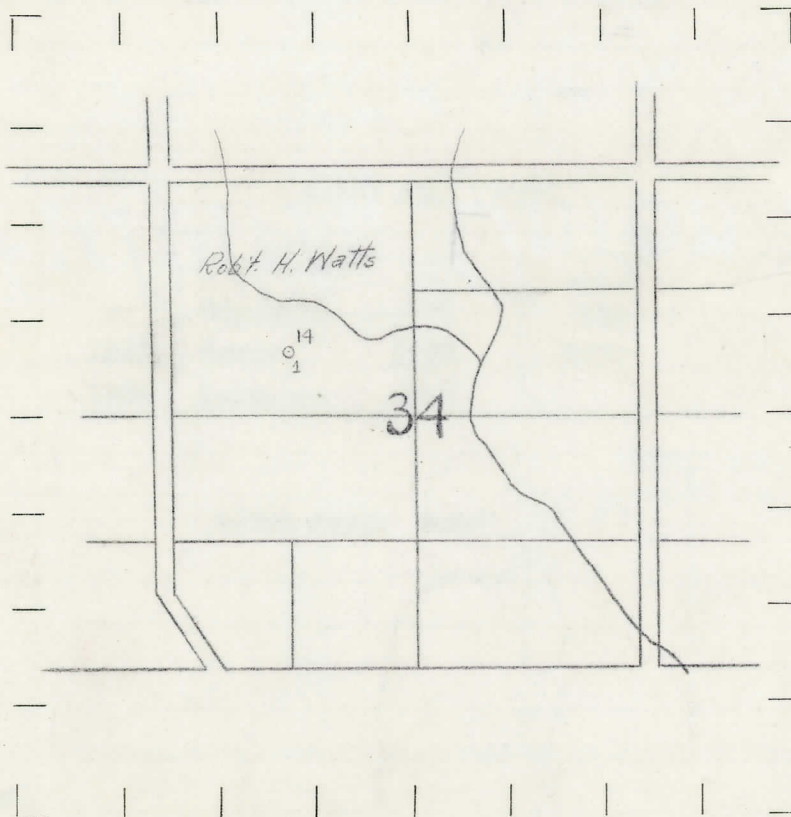
⊙ DRY SHOWING GAS

⊙ ABANDONED LOCATION

⊙ ABANDONED GAS WELL

⊙ ABANDONED OIL WELL

NOTE: Below make tracing from map, (when no map is obtainable make sketch) showing farm, center of section, this location with measurements and also wells, dry holes, or other locations in the vicinity of this location. Make copy to keep for reference and send original to Columbus office.



REMARKS:

SIGNED

Superintendent or Foreman.



No. - 14 -

STATE Michigan COUNTY Iosco DIST. Grant TWP. Grant SEC. 34 TOWN 22 N RANGE 6 E

WELL No. 1 (SERIAL No. 14) FARM Robert H. Watts ACRES                     

NAME OF STREAM OR WATERS \_\_\_\_\_ QUADRANGLE  $S\frac{1}{2}$  - NW

OPERATOR Gibson-Johnson-Borden MAP Grant Twp.. Iosco Co.

LOCATION REPORT SENT IN (DATE) June 27, 1930.

WELL STARTED (DATE) June 1930. WELL COMPLETED (DATE) Oct. 4. 1930.

XOXOWELL

**GAS-MEX**

## DRY HOLE

ABANDONED WELL

CROSS OUT THREE OF THE ABOVE

## WELL RECORD

[illegible]

1st 24 HOURS PRODUCTION \_\_\_\_\_ BARRELS OR FEET

2nd " " "

[illegible]

4th " " " " " "

5th " " "

## SAND AND CASING

[illegible]

REMARKS	Log attached.
---------	---------------

NOTE:—MAKE COPY TO KEEP FOR REFERENCE AND SEND ORIGINAL TO CHICAGO OFFICE. LIST MATERIAL CHARGEABLE TO WELL ON OTHER SIDE.

SIGNED

SUPT. OR FOREMAN



DESCRIPTION	QUANTITY	MAKE	SIZE	MATERIAL
-------------	----------	------	------	----------

LIST OF MATERIAL CHARGEABLE TO WELL NO.

Grant Twp., Iosco Co.

14" 47  
8" 1322  
6 5/8" 1964

Drift	0	47
Shale, some gypsum	47	195
Marshall	195	310
Light shale	310	335
White Marshall	335	453
Blue shale	453	465
Gray shale	465	473
Blue shale	473	570
Brown shale	570	576
Blue shale	576	586
Blue mud	586	600
Red rock	600	630
Blue mud	630	635
Red rock	635	650
Blue shale	650	675
Red sand	675	685
Gray shale	685	715
Lime shell	715	730
Pink rock	730	750
White shale & blue slate	750	835
Gray shale	835	855
Lime	855	890
Gray shale	890	903
Red rock	903	930
Gray shale	930	1060
Dark lime	1060	1080
Sandy shale	1080	1110
Blue shale	1110	1120
Water sand	1120	1175
Salt sand	1175	1215
Blue shale	1215	1235
Light shale	1235	1237
Lime shell	1237	1243
Blue gypsum	1243	1295
Gray shale	1295	1405
Sandy shale	1405	1460
Gray shale	1460	1605
Sandy shale	1605	1665
Gray shale	1665	1685
Light shale	1685	1700
White slate, muddy	1700	1745
Light brown shale	1745	1750
Lime, hard	1750	1765
Black slate	1765	1795
Berea sand	1795	1825
Light shale	1825	1835
White slate	1835	1835
Sand	1835	1885

Little water 885'

300' water  
800' "

Red Rock ?

1795  
686  
-1111

1745  
686  
-1059

## LIST OF MATERIAL CHARGEABLE TO WELL NO. 00 00001 00 00001

Sand	1885	1930	water 1870'
White slate	1930	1935	
Sand, hd. water	1935	1943	
Blue shale	1943	1975	
White sand	1975	1980	
Gray lime	1980	1990	
Blue shale	1990	2015	
Black shale	2015	2040	
Brown shale	2040	2085	
Black shale	2085	2155	
Brown & black shale	2155	2280	
Brown shale	2280	2300	
Traverse	2300	2335	
Black shale	2335	2375	
Lime shale	2375	2380	
Shale	2380	2385	
Lime	2385	2410	
Black shale	2410	2430	
Gray shale	2430	2515	
Gray lime	2515	2535	
Blue shale	2535	2550	
Lime	2550	2565	
Gray shale	2565	2600	
Gray lime	2600	2815	
Black shale	2815	2850	
Lime	2850	2855	
Slate	2855	2866	
Lime	2866	2885	
White slate	2885	2915	
White slate	2915	3020	
Gray slate	3020	3040	

Total depth

3040'