



Western Michigan University
ScholarWorks at WMU

Legacy Scout Tickets from Pure Oil Company

8-20-2021

**MGRRE_PureOilScoutTickets_Stork, Fred W. et
al_1_21069127880000**

MGRRE

Western Michigan University

Follow this and additional works at: <https://scholarworks.wmich.edu/pure>



Part of the Geology Commons

WMU ScholarWorks Citation

MGRRE, "MGRRE_PureOilScoutTickets_Stork, Fred W. et al_1_21069127880000" (2021). *Legacy Scout Tickets from Pure Oil Company*. 2847.

<https://scholarworks.wmich.edu/pure/2847>

This Document is brought to you for free and open access via ScholarWorks at WMU. It has been accepted for inclusion in Legacy Scout Tickets from Pure Oil Company by an authorized administrator of ScholarWorks at WMU. See the National Digital Catalogue - Science Base Catalogue for more collections submitted by MGRRE.



MGRRE_PureOilScoutTickets_Stork, Fred W. et al_1_21069127880000

API 21069127880000

Permit Number 12788

Lease Name Stork, Fred W. et al

Well Number 1

County losco

Township 22N

Range 05E

Section 3

2021 DEQ or Pure co_name Stork Oil Company

Pure Number 24

Latitude 44.32123

Longitude -83.81999

THE PURE OIL COMPANY LOCATION REPORT

Date November 20, 1946

A.F.E. No. _____

Division Mich. Producing District _____

Lease Fred W. Stork, et al

Acres _____ Lease No. _____ Elevation _____ Well No. 1 (Serial No. 24)

Quadrangle SE SW SW Sec. 3 Twp. 22 N Rge. 5 E Twp. Reno

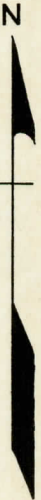
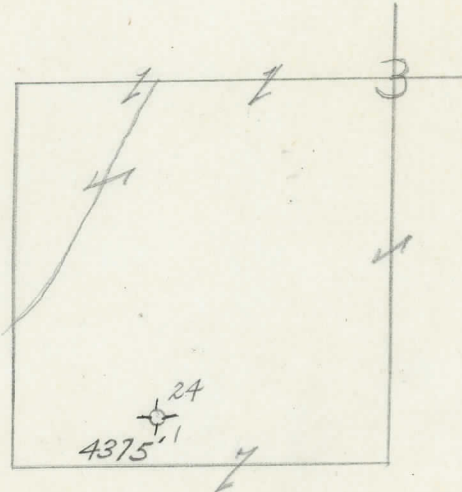
Survey _____ County Iosco State Michigan

Operator Stork Oil Co. Map Reno Township, Iosco County

<u>2310</u>	<u>2310</u>	Feet from North Line of Lease
		" " East " " "
		" " South " " "
<u>990</u>	<u>990</u>	" " West " " "
		Feet from North Line of Section
		" " East " " "
<u>330</u>	<u>330</u>	" " South " <u>1/4</u> "
<u>990</u>	<u>990</u>	" " West " " "

LEGEND

- ☀ Gas Well
- Oil Well
- ☀ Gas - Distillate Well
- ∅ or ○ Dry Hole
- Dry Showing Oil
- Location
- ☉ Dry Showing Gas
- ⊗ Abandoned Location
- ☀ or ☀ Abandoned Gas Well
- or ● Abandoned Oil Well
- or ○ Input Well



Remarks: _____ Scale _____

Submitted by CB Civil Engineer Approved by _____ Division Manager

Approved by _____ Vice-President - General Manager