



Western Michigan University
ScholarWorks at WMU

Thin Sections

10-20-2022

MGRRE_ThinSections_04-A_65

MGRRE

Western Michigan University

Follow this and additional works at: <https://scholarworks.wmich.edu/tsi>



Part of the Geology Commons

Recommended Citation

MGRRE, "MGRRE_ThinSections_04-A_65" (2022). *Thin Sections*. 3111.
<https://scholarworks.wmich.edu/tsi/3111>

This Image is brought to you for free and open access
via ScholarWorks at WMU. It has been accepted for
inclusion in Thin Sections by an authorized
administrator of ScholarWorks at WMU. See the
National Digital Catalogue - Science Base Catalogue
for more collections submitted by MGRRE.



MGRRE_ThinSections_04-A_65

API 21113340780100

Permit Number 34078

Well Name Bruggers 3-7

County Missaukee

Township 24N

Range 6W

Section 7

Formation Black River @9858; Glenwood @10114; PdC@10170

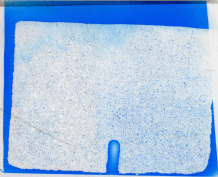
Box 04-A

Slot 65

Depth 10189

Latitude 44.49066

Longitude -85.08114



JEM-810189