



Western Michigan University
ScholarWorks at WMU

Legacy Scout Tickets from Pure Oil Company

8-20-2021

MGRRE_PureOilScoutTickets_Aldrich_1_21073021080000

MGRRE

Western Michigan University

Follow this and additional works at: <https://scholarworks.wmich.edu/pure>



Part of the Geology Commons

WMU ScholarWorks Citation

MGRRE, "MGRRE_PureOilScoutTickets_Aldrich_1_21073021080000" (2021). *Legacy Scout Tickets from Pure Oil Company*. 3234.

<https://scholarworks.wmich.edu/pure/3234>

This Document is brought to you for free and open access via ScholarWorks at WMU. It has been accepted for inclusion in Legacy Scout Tickets from Pure Oil Company by an authorized administrator of ScholarWorks at WMU. See the National Digital Catalogue - Science Base Catalogue for more collections submitted by MGRRE.



MGRRE_PureOilScoutTickets_Aldrich_1_21073021080000

API 21073021080000

Permit Number 2108

Lease Name Aldrich

Well Number 1

County Isabella

Township 14N

Range 06W

Section 22

2021 DEQ or Pure co_name Arbaugh Brothers

Pure Number 473

Latitude 43.58715

Longitude -85.00927

DATE 7-26-34

LOCATION REPORT

No. 473

STATE Michigan COUNTY Isabella DIST. Broomfield SEC. 22 TOWN 14 N RANGE 6 W

WELL No. 1 (SERIAL No. 473) FARM Ray Aldrich ACRES

NAME OF STREAM OR WATERS QUADRANGLE C. NE-SE

OPERATOR Arbaugh Bros. MAP Broomfield Township, Isabella County

660 Feet from North Line of Farm

660 " " East " " "

" " South " " "

" " West " " "

660 Feet from North Line of Section

660 " " East " " "

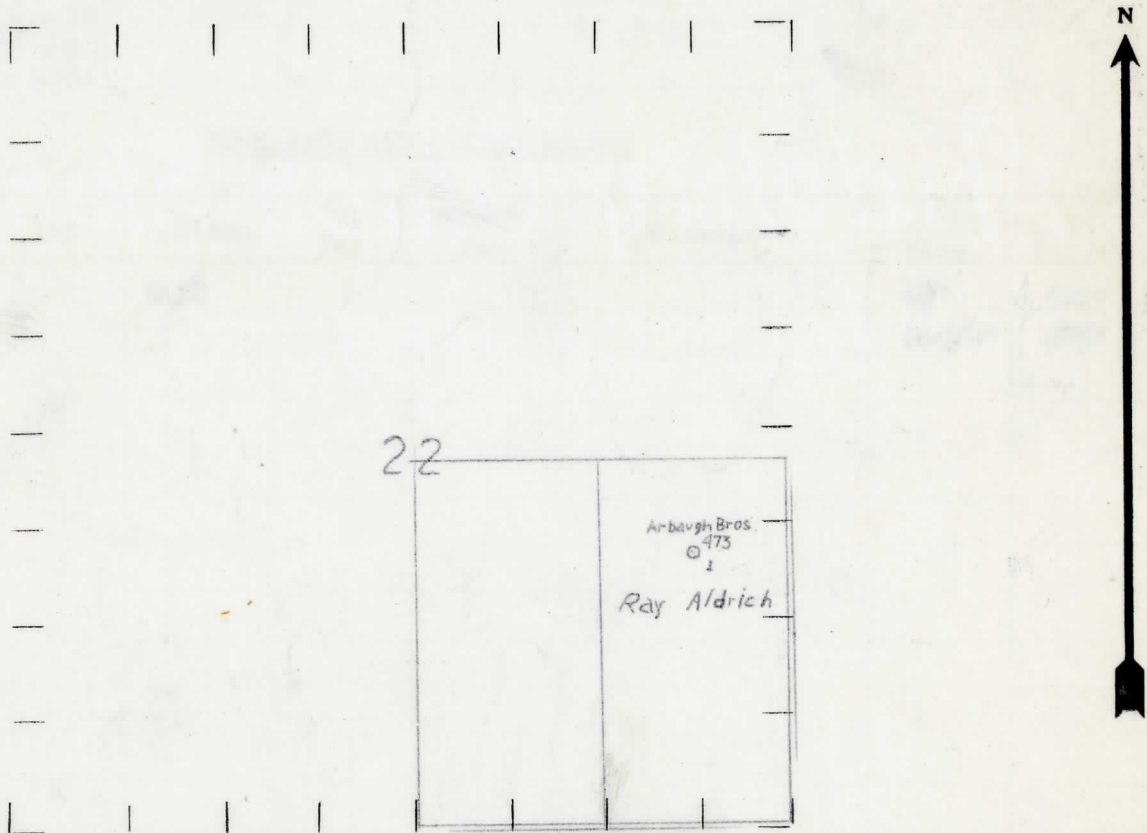
" " South " " "

" " West " " "

LEGEND

- LOCATION
- ① RIG
- ⊕ DRILLING
- ⊛ GAS WELL
- OIL WELL
- ⬮ SMALL OIL WELL
- ⬮ DRY HOLE
- ⬮ DRY SHOWING OIL
- ⊛ DRY SHOWING GAS
- ⬮ ABANDONED LOCATION
- ⊛ ABANDONED GAS WELL
- ⬮ ABANDONED OIL WELL

NOTE: Below make tracing from map, (when no map is obtainable make sketch) showing farm, center of section, this location with measurements and also wells, dry holes, or other locations in the vicinity of this location. Make copy to keep for reference and send original to Columbus office.



REMARKS:

SIGNED

R. A. Yeagse
Superintendent or Foreman.
Per 2108

COMPLETION RECORD OF WELLS DRILLED BY OTHER OPERATORS

Michigan Producing Division

Date 6-27-35 No. 473
 State Michigan County Isabella Dist.
 (Serial No.) Twp. Broomfield Sec. 22 Twp. 14-N Rge. 6-W
 Well No. 1 (County No.) 473 Farm Ray Aldrich Acres _____
 Operator Arbaugh Bros. Information secured ~~from~~ Scouting Dept. by
 Date well started 8-1-34 Date well completed 12-27-34 Elevation 1019.5

PRODUCTION RECORD

1st 24 hours natural Dry Hole
 2nd 24 hours natural _____
 Date of shot _____ No. of quarts _____
 _____ From _____ to _____ From _____ to _____
 Date of acid _____ No. of gallons _____
 shot
 1st 24 hours after acid _____
 shot
 2nd 24 hours after acid _____

FORMATION AND CASING RECORD

Formation	Top	Bottom	Top Pay	Bottom Pay	Remarks	Casing	
						Size	Set at
Total Depth		1130				8 1/2"	582'
						6-5/8"	685'

Remarks Lost tools at 1130 - unable to fish out - abandoned hole.

Signed E. N. Bell