



Western Michigan University  
ScholarWorks at WMU

---

Legacy Scout Tickets from Pure Oil Company

---

8-20-2021

**MGRRE\_PureOilScoutTickets\_Hart\_1\_21073021830000**

MGRRE

*Western Michigan University*

Follow this and additional works at: <https://scholarworks.wmich.edu/pure>



Part of the Geology Commons

---

#### **WMU ScholarWorks Citation**

MGRRE, "MGRRE\_PureOilScoutTickets\_Hart\_1\_21073021830000" (2021). *Legacy Scout Tickets from Pure Oil Company*. 3252.

<https://scholarworks.wmich.edu/pure/3252>

This Document is brought to you for free and open access via ScholarWorks at WMU. It has been accepted for inclusion in Legacy Scout Tickets from Pure Oil Company by an authorized administrator of ScholarWorks at WMU. See the National Digital Catalogue - Science Base Catalogue for more collections submitted by MGRRE.



---

**MGRRE\_PureOilScoutTickets\_Hart\_1\_21073021830000**

API 21073021830000

Permit Number 2183

Lease Name Hart

Well Number 1

County Isabella

Township 15N

Range 03W

Section 18

2021 DEQ or Pure co\_name Morris, Vanjeuren Oil and Gas Syndicate

Pure Number 491

Latitude 43.6962

Longitude -84.71665

DATE September 27, 1934

LOCATION REPORT

No. 491

STATE Michigan COUNTY Isabella DIST. Denver TWP. Denver SEC. 18 TOWN 15N RANGE 3W

WELL No. 1 (SERIAL No. 491) FARM J. Hart ACRES

NAME OF STREAM OR WATERS QUADRANGLE SW-NW-NE  
SW-NW-NE

OPERATOR Arthur R. Morris & Chas. VanKeuren MAP Denver Township, Isabella County

990 990 Feet from North Line of Farm Denver Twp - Isabella

----- " " East " " "

----- " " South " " "

330 330 ----- " " West " " "

990 990 Feet from North Line of Section

2310 2310 ----- " " East " " "

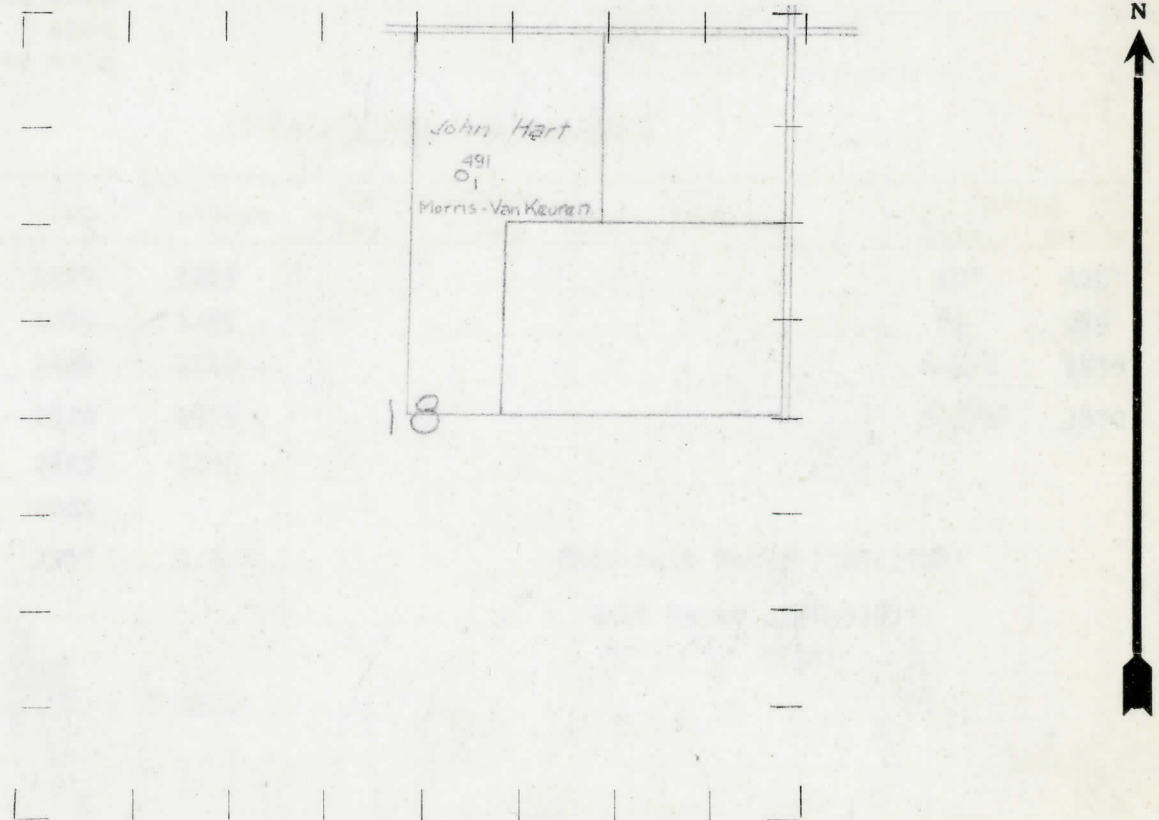
----- " " South " " "

----- " " West " " "

LEGEND

- LOCATION
- ① RIG
- ⊕ DRILLING
- ⊗ GAS WELL
- OIL WELL
- ⬮ SMALL OIL WELL
- ⊕ DRY HOLE
- ⬮ DRY SHOWING OIL
- ⊗ DRY SHOWING GAS
- ⊖ ABANDONED LOCATION
- ⊗ ABANDONED GAS WELL
- ⬮ ABANDONED OIL WELL

NOTE: Below make tracing from map, (when no map is obtainable make sketch) showing farm, center of section, this location with measurements and also wells, dry holes, or other locations in the vicinity of this location. Make copy to keep for reference and send original to Columbus office.



REMARKS:  
-----  
-----  
-----

SIGNED R. L. Yeager  
Superintendent or Foreman.

Michigan Producing Division

Date December 28, 1934 No. 491  
 State 12/28/34 County Isabella Dist. Denver  
 (Serial No.) Twp. 15N Rge. 3W  
 Well No. 1 (County No.) 491 Farm J. Hart Acres  
 Operator Morris-VanKueren O. & G. Co. Information secured ~~from~~ by G. H. Bell  
 Date well started 10/3/34 Date well completed 12/21/34 Elevation 754.9'

PRODUCTION RECORD

1st 24 hours natural DRY HOLE  
 2nd 24 hours natural  
 Date of shot No. of quarts From to From to  
 Date of acid No. of gallons  
 1st 24 hours after acid shot  
 2nd 24 hours after acid shot

FORMATION AND CASING RECORD

Formation	Top	Bottom	Top Pay	Bottom Pay	Remarks	Casing	
						Size	Set at
Stray	1270	1285				10"	425'
Marshall	1285	1425				8 1/2"	985
Red Rock	1425	1519				6-5/8"	1538
Berea	2520	2525				5-3/16"	3670
Antrim	2525	3000					
Traverse	3000						
Dundee	3367	S.L.M.			Show Salt Water 3725-3728'		
					Salt Water 3784-3788'		
					" " 3834'		
Total Depth		3848'					

Remarks

Signed G. H. Bell