



Western Michigan University
ScholarWorks at WMU

Legacy Scout Tickets from Pure Oil Company

8-20-2021

MGRRE_PureOilScoutTickets_West Est._1_21073022330000

MGRRE

Western Michigan University

Follow this and additional works at: <https://scholarworks.wmich.edu/pure>



Part of the Geology Commons

WMU ScholarWorks Citation

MGRRE, "MGRRE_PureOilScoutTickets_West Est._1_21073022330000" (2021). *Legacy Scout Tickets from Pure Oil Company*. 3261.

<https://scholarworks.wmich.edu/pure/3261>

This Document is brought to you for free and open access via ScholarWorks at WMU. It has been accepted for inclusion in Legacy Scout Tickets from Pure Oil Company by an authorized administrator of ScholarWorks at WMU. See the National Digital Catalogue - Science Base Catalogue for more collections submitted by MGRRE.



MGRRE_PureOilScoutTickets_West Est._1_21073022330000

API 21073022330000

Permit Number 2233

Lease Name West Est.

Well Number 1

County Isabella

Township 15N

Range 04W

Section 25

2021 DEQ or Pure co_name Brehm, E.E. Trustee

Pure Number 500

Latitude 43.65982

Longitude -84.72919

COMPLETION REPORT THE PURE OIL COMPANY BY OTHER OPERATORS

DATE November 15, 1934

LOCATION REPORT

No. 500

STATE Michigan COUNTY Isabella DIST. Isabella TWP. Isabella SEC. 25 TOWN 15N RANGE 4W

WELL No. 1 (SERIAL No. 500) FARM William West, Estate ACRES

NAME OF STREAM OR WATERS QUADRANGLE SE-NE-SE SE-NE-SE

OPERATOR Elmer E. Brehm, Trustee Map Isabella Township, Isabella County
Elmer E. Brehm, Tr.

970 970 Feet from North Line of Farm

330 330 " " East " " "

" " South " " "

" " West " " "

Feet from North Line of Section

330 330 " " East " " "

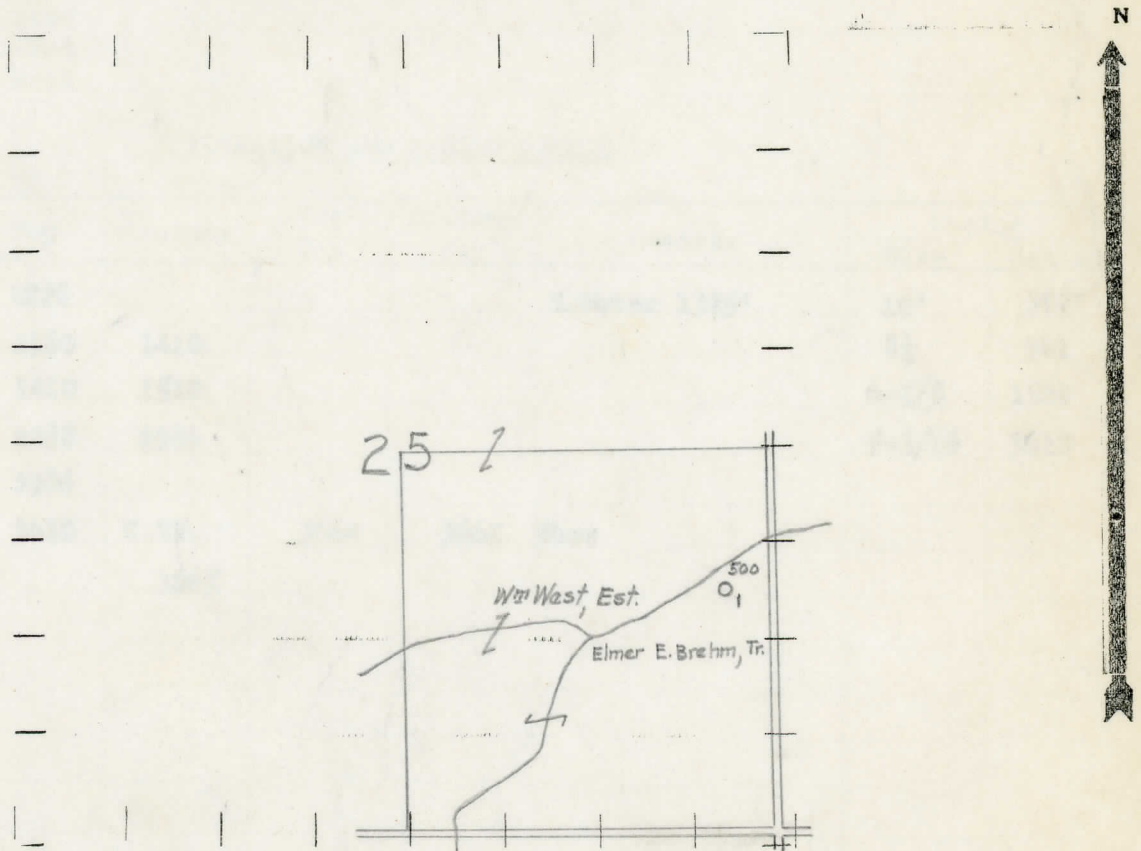
1670 1670 " " South " " "

" " West " " "

LEGEND

- LOCATION
- ⊙ RIG
- ⊕ DRILLING
- ☀ GAS WELL
- OIL WELL
- ⊙ SMALL OIL WELL
- ⊖ DRY HOLE
- ⊙ DRY SHOWING OIL
- ☀ DRY SHOWING GAS
- ⊖ ABANDONED LOCATION
- ☀ ABANDONED GAS WELL
- ⊖ ABANDONED OIL WELL

NOTE: Below make tracing from map, (when no map is obtainable make sketch) showing farm, center of section, this location with measurements and also wells, dry holes, or other locations in the vicinity of this location.



REMARKS:

SIGNED

R. A. Yager

Superintendent or Foreman.

Michigan Producing Division

Date 8/1/35 No. 500
 State Michigan County Isabella Dist. Isabella
 (Serial No.) Twp. Isabella Sec. 25 Twp. 15N Rge. 4W
 Well No. 1 (County No.) 500 Farm Wm. West Estate Acres _____
 Operator E. E. Brehm, Trustee Information secured from Scouting Dept. by _____
 Date well started 11/19/34 Date well completed 3/28/35 Elevation 745.1'

PRODUCTION RECORD

1st 24 hours natural Dry Hole
 2nd 24 hours natural _____
 Date of shot _____ No. of quarts _____ From _____ to _____ From _____ to _____
 Date of acid 7/21/35 No. of gallons 1000
 shot _____
 1st 24 hours after acid _____
 shot _____
 2nd 24 hours after acid _____

FORMATION AND CASING RECORD

Formation	Top	Bottom	Top Pay	Bottom Pay	Remarks	Casing	
						Size	Set at
Stray	1228				S. Water 1325'	10"	362'
Marshall	1360	1410				8 1/4"	941
Red Rock	1410	1510				6-5/8"	1524
Antrim	2488	2986				5-3/16"	3610
Traverse	2986						
Dundee	3610	C.T.M.	3664	3665	Show		
Total Depth		3665					

Remarks _____

Signed B. N. Bell