



Western Michigan University
ScholarWorks at WMU

Legacy Scout Tickets from Pure Oil Company

8-20-2021

MGRRE_PureOilScoutTickets_Carrotehrs_2_na

MGRRE

Western Michigan University

Follow this and additional works at: <https://scholarworks.wmich.edu/pure>



Part of the Geology Commons

WMU ScholarWorks Citation

MGRRE, "MGRRE_PureOilScoutTickets_Carrotehrs_2_na" (2021). *Legacy Scout Tickets from Pure Oil Company*. 3273.

<https://scholarworks.wmich.edu/pure/3273>

This Document is brought to you for free and open access via ScholarWorks at WMU. It has been accepted for inclusion in Legacy Scout Tickets from Pure Oil Company by an authorized administrator of ScholarWorks at WMU. See the National Digital Catalogue - Science Base Catalogue for more collections submitted by MGRRE.



MGRRE_PureOilScoutTickets_Carrotehrs_2_na

API na

Permit Number na

Lease Name Carrotehrs

Well Number 2

County Isabella

Township 15N

Range 06W

Section 32

2021 DEQ or Pure co_name Sherman Drl Co

Pure Number 513

Latitude 43.6467773

Longitude -85.0573064

THE PURE OIL COMPANY

LOCATION REPORT

DATE December 20, 1934

No. 513

STATE Michigan

COUNTY Isabella

Isabella
Isabella

DIST. Sherman
TWP. Sherman
PREC. Geo. C. Thers
George Carrothers

SEC. 32

TOWN. 15N. RANGE 6W.
15N. 6W.

WELL No. 2 (SERIAL No. 513) FARM

ACRES

NAME OF STREAM OR WATERS

QUADRANGLE C-34-SW.
C-S $\frac{1}{2}$ -SW

OPERATOR Sherman Drilling Company

Map Sherman Township, Isabella County

Sherman Dr. Co.

Sherman Twp - Isabella Co.

660 660 Feet from North Line of Farm

" " East " " "

660 660 " " South " " "

" " West " " "

Feet from North Line of Section

" " East " " "

660 660 " " South " " "

1320 1320 " " West " " "

LEGEND

○ LOCATION

⊙ RIG

⊕ DRILLING

☀ GAS WELL

● OIL WELL

⊙ SMALL OIL WELL

⊙ DRY HOLE

⊙ DRY SHOWING OIL

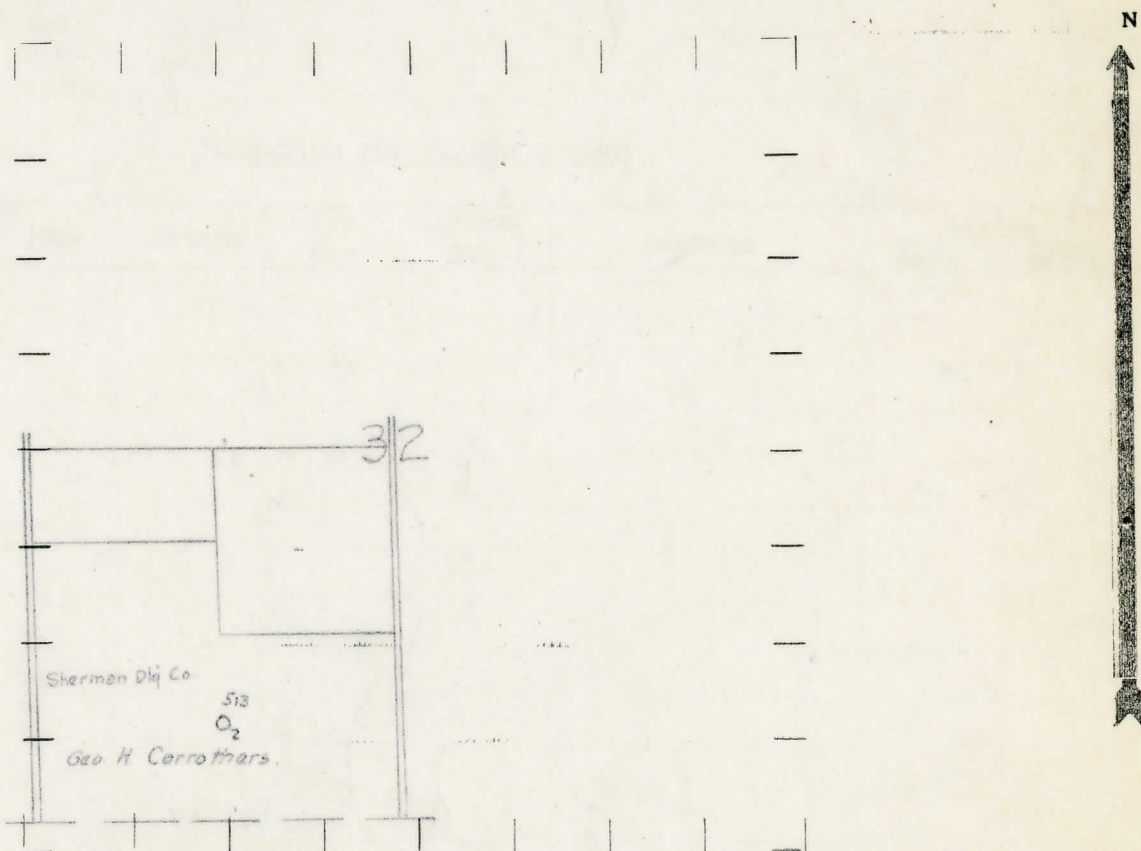
⊙ DRY SHOWING GAS

⊙ ABANDONED LOCATION

⊙ ABANDONED GAS WELL

⊙ ABANDONED OIL WELL

NOTE: Below make tracing from map, (when no map is obtainable make sketch) showing farm, center of section, this location with measurements and also wells, dry holes, or other locations in the vicinity of this location.



REMARKS:

SIGNED

R. L. Yeager

Superintendent or Foreman.

COMPLETION RECORD OF WELLS DRILLED BY OTHER OPERATORS

Michigan Producing Division

Date **June 6, 1935** No. **513**
State **Michigan** County **Isabella** Dist. **Sherman** Twp. **Sherman** Sec. **32** Twp. **15N** Rge. **6W**
Well No. **1** (Serial No.) (County No.) **513** Farm **Geo. Carrothers** Acres
Operator **Sherman Drilling Company** Information secured ~~from~~ ^{by} **Scouting Dept.**
Date well started ----- Date well completed ----- Elevation **1003.1'**

PRODUCTION RECORD

1st 24 hours natural **Location abandoned**
2nd 24 hours natural
Date of shot No. of quarts From to From to
Date of acid No. of gallons
1st 24 hours after acid shot
2nd 24 hours after acid shot

FORMATION AND CASING RECORD

Formation	Top	Bottom	Top Pay	Bottom Pay	Remarks	Casing	
						Size	Set at
Total Depth 61'							

Remarks

Signed *P. H. Bell*