



Western Michigan University
ScholarWorks at WMU

Legacy Scout Tickets from Pure Oil Company

8-20-2021

MGRRE_PureOilScoutTickets_Schug_1_21073022830000

MGRRE

Western Michigan University

Follow this and additional works at: <https://scholarworks.wmich.edu/pure>



Part of the Geology Commons

WMU ScholarWorks Citation

MGRRE, "MGRRE_PureOilScoutTickets_Schug_1_21073022830000" (2021). *Legacy Scout Tickets from Pure Oil Company*. 3274.

<https://scholarworks.wmich.edu/pure/3274>

This Document is brought to you for free and open access via ScholarWorks at WMU. It has been accepted for inclusion in Legacy Scout Tickets from Pure Oil Company by an authorized administrator of ScholarWorks at WMU. See the National Digital Catalogue - Science Base Catalogue for more collections submitted by MGRRE.



MGRRE_PureOilScoutTickets_Schug_1_21073022830000

API 21073022830000

Permit Number 2283

Lease Name Schug

Well Number 1

County Isabella

Township 16N

Range 04W

Section 31

2021 DEQ or Pure co_name O'Neal and Sarver

Pure Number 514

Latitude 43.73281

Longitude -84.83025

COMPLETION RECORD BY OTHER OPERATORS
THE PURE OIL COMPANY

DATE December 20, 1934

LOCATION REPORT

No. 514

STATE Michigan COUNTY Isabella DIST. Vernon TWP. Vernon SEC. 31 TOWN 16N RANGE 4W

WELL No. 1 (SERIAL No. 514) FARM O'Neal-Sarver ACRES

NAME OF STREAM OR WATERS QUADRANGLE C-NE-SE
C-NE-SE

OPERATOR G. R. Bogan & M. B. Schug Map Vernon Township, Isabella County
G.R. Bogan & M.B. Schug Vernon - Isa.

Feet from North Line of Farm

660 660 " " East " " "

660 660 " " South " " "

660 660 " " West " " "

660 660 Feet from North Line of Section

660 660 " " East " " "

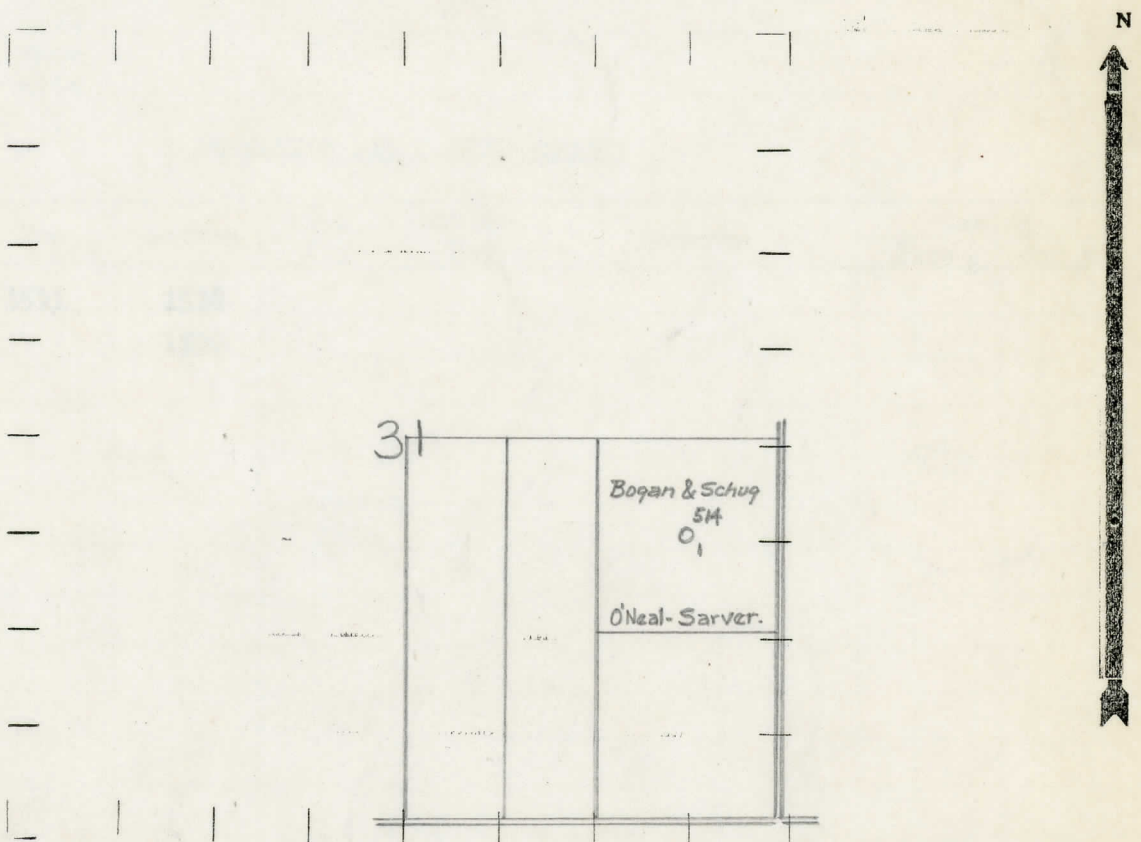
" " South " " "

" " West " " "

LEGEND

- LOCATION
- ⊕ RIG
- ⊕ DRILLING
- ☀ GAS WELL
- OIL WELL
- ⊕ SMALL OIL WELL
- ⊕ DRY HOLE
- ⊕ DRY SHOWING OIL
- ⊕ DRY SHOWING GAS
- ⊕ ABANDONED LOCATION
- ☀ ABANDONED GAS WELL
- ⊕ ABANDONED OIL WELL

NOTE: Below make tracing from map, (when no map is obtainable make sketch) showing farm, center of section, this location with measurements and also wells, dry holes, or other locations in the vicinity of this location.



REMARKS:

SIGNED

R. L. Yeager
Superintendent or Foreman.

Michigan Producing Division

Date 8/1/35 No. 514
 State Michigan County Isabella Dist. Vernon
 (Serial No.) Twp. Vernon Sec. 31 Twp. 16N Rge. 4W
 Well No. 1 (County No.) 514 Farm Egan & Schug Acres _____
 Operator O'Neal & Sarver Information secured ~~from~~ by Scouting Dept.
 Date well started 1/3/35 Date well completed 7/27/35 Elevation 861.1'

PRODUCTION RECORD

1st 24 hours natural Dry Hole
 2nd 24 hours natural _____
 Date of shot _____ No. of quarts _____ From _____ to _____ From _____ to _____
 Date of acid _____ No. of gallons _____
 shot
 1st 24 hours after acid _____
 shot
 2nd 24 hours after acid _____

FORMATION AND CASING RECORD

Formation	Top	Bottom	Top Pay	Bottom Pay	Remarks	Casing	
						Size	Set at
Stray Sand	1511	1518					
Total Depth		1520					

Remarks Show Gas 1511' - Show Blk. Oil and Salt Water 1515'

Signed S. H. Bell
2.