



Western Michigan University
ScholarWorks at WMU

Legacy Scout Tickets from Pure Oil Company

8-20-2021

**MGRRE_PureOilScoutTickets_Vandercook, John
D._1_21073023700000**

MGRRE
Western Michigan University

Follow this and additional works at: <https://scholarworks.wmich.edu/pure>



Part of the Geology Commons

WMU ScholarWorks Citation

MGRRE, "MGRRE_PureOilScoutTickets_Vandercook, John D._1_21073023700000" (2021). *Legacy Scout Tickets from Pure Oil Company*. 3289.
<https://scholarworks.wmich.edu/pure/3289>

This Document is brought to you for free and open access via ScholarWorks at WMU. It has been accepted for inclusion in Legacy Scout Tickets from Pure Oil Company by an authorized administrator of ScholarWorks at WMU. See the National Digital Catalogue - Science Base Catalogue for more collections submitted by MGRRE.



MGRRE_PureOilScoutTickets_Vandercook, John D._1_21073023700000

API 21073023700000

Permit Number 2370

Lease Name Vandercook, John D.

Well Number 1

County Isabella

Township 15N

Range 03W

Section 24

2021 DEQ or Pure co_name United Drillers and Production, Incorporated

Pure Number 529

Latitude 43.67432

Longitude -84.60887

COMPLETION RECORD THE PURE OIL COMPANY BY OTHER OPERATORS

DATE March 7, 1935

LOCATION REPORT

No. 529

STATE Michigan COUNTY Isabella DIST. Denver SEC. 24 TOWN 15N RANGE 3W
TWP. Denver PREC. John D. Vandercook

WELL No. 1 (SERIAL No. 529) FARM John D. Vandercook ACRES

NAME OF STREAM OR WATERS QUADRANGLE SE-NE-SE

OPERATOR United Drillers, Incorporated Map Denver Township, Isabella County
United Drillers Inc. Denver-Isa Co.

Feet from North Line of Farm

330 330 " " East " " "

330 330 " " South " " "

" " West " " "

990 990 Feet from North Line of 1/4 Section

330 330 " " East " " "

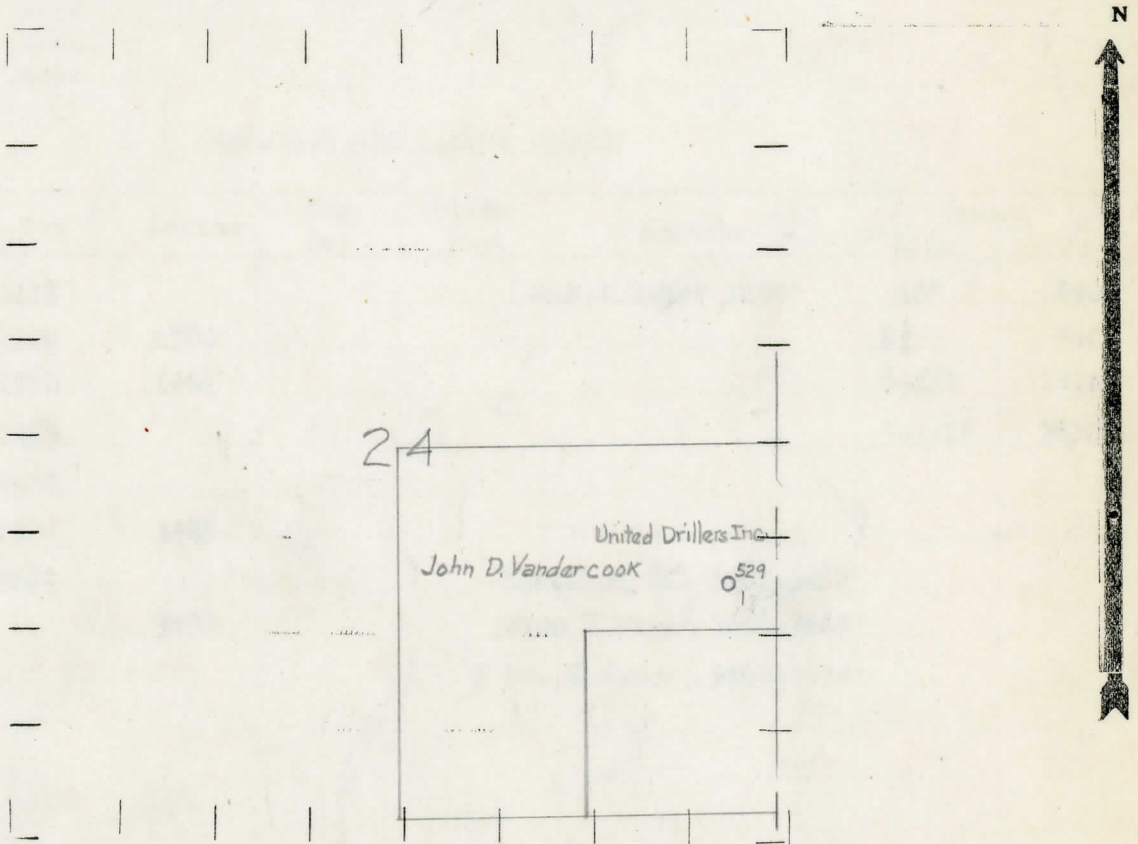
" " South " " "

" " West " " "

LEGEND

- LOCATION
- ⊕ RIG
- ⊕ DRILLING
- ☀ GAS WELL
- OIL WELL
- ⊕ SMALL OIL WELL
- ⊕ DRY HOLE
- DRY SHOWING OIL
- ☀ DRY SHOWING GAS
- ⊕ ABANDONED LOCATION
- ☀ ABANDONED GAS WELL
- ABANDONED OIL WELL

NOTE: Below make tracing from map, (when no map is obtainable make sketch) showing farm, center of section, this location with measurements and also wells, dry holes, or other locations in the vicinity of this location.



REMARKS:

SIGNED

R. D. Yeager
Superintendent or Foreman.

Michigan Producing Division

Date July 25, 1935 No. 529
 State Michigan County Isabella Dist. _____
 (Serial No.) Twp. Denver Sec. 24 Twp. 15N Rge. 3W
 Well No. 1 (County No.) 529 Farm John D. Vandercreek Acres _____
 Operator United Drillers, Inc. Information secured ~~from~~ by Scouting Dept.
 Date well started 4/10/35 Date well completed 7/16/35 Elevation 704.8'

PRODUCTION RECORD

1st 24 hours natural Dry Hole
 2nd 24 hours natural _____
 Date of shot _____ No. of quarts _____ From _____ to _____ From _____ to _____
 Date of acid _____ No. of gallons _____
 1st 24 hours after acid shot _____
 2nd 24 hours after acid shot _____

FORMATION AND CASING RECORD

| Formation | Top | Bottom | Top Pay | Bottom Pay | Remarks | Casing | |
|-------------|------|--------|---------|------------|---------------------------|---------|--------|
| | | | | | | Size | Set at |
| Stray | 1245 | | | | H.P.S. Water 1250' | 10" | 290' |
| Marshall | 1310 | 1380 | | | | 8 1/4" | 940 |
| Red Rock | 1380 | 1462 | | | | 6-5/8" | 1470 |
| Sunbury | 2455 | | | | | 5-3/16" | 3630 |
| Antrim | 2542 | | | | | | |
| Traverse | 2974 | 3385 | | | | | |
| Dundee | 3629 | | | | Lgt. Show Oil 3661-3666' | | |
| Total Depth | | 3674 | | | Show S. Water 3666-3669' | | |
| | | | | | 3 Ba. S. Water 3669-3674' | | |

Remarks Show Oil 3090-3100' - Show Salt Water 3100'

Signed E. N. Bell