



Western Michigan University  
ScholarWorks at WMU

---

Legacy Scout Tickets from Pure Oil Company

---

8-20-2021

**MGRRE\_PureOilScoutTickets\_Weber\_1\_21073023770000**

MGRRE

*Western Michigan University*

Follow this and additional works at: <https://scholarworks.wmich.edu/pure>



Part of the Geology Commons

---

#### **WMU ScholarWorks Citation**

MGRRE, "MGRRE\_PureOilScoutTickets\_Weber\_1\_21073023770000" (2021). *Legacy Scout Tickets from Pure Oil Company*. 3293.

<https://scholarworks.wmich.edu/pure/3293>

This Document is brought to you for free and open access via ScholarWorks at WMU. It has been accepted for inclusion in Legacy Scout Tickets from Pure Oil Company by an authorized administrator of ScholarWorks at WMU. See the National Digital Catalogue - Science Base Catalogue for more collections submitted by MGRRE.



---

**MGRRE\_PureOilScoutTickets\_Weber\_1\_21073023770000**

API 21073023770000

Permit Number 2377

Lease Name Weber

Well Number 1

County Isabella

Township 15N

Range 05W

Section 22

2021 DEQ or Pure co\_name Bernier W. J

Pure Number 533

Latitude 43.68277

Longitude -84.90744

DATE March 14, 1935 LOCATION REPORT No. 533  
 STATE Michigan COUNTY Isabella DIST. Nottawa SEC. 22 TOWN 15N RANGE 5W  
 WELL No. 1 (SERIAL No. 533) FARM Jacob Weber ACRES  
 NAME OF STREAM OR WATERS QUADRANGLE NW-NW-NW

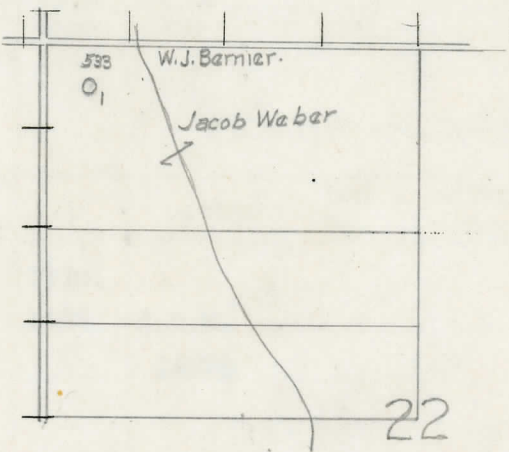
OPERATOR W. J. Bernier Map Nottawa Township, Isabella County  
W. J. Bernier Nottawa Twp - Isa Co.

330 330 Feet from North Line of Farm  
 " " East " " "  
 " " South " " "  
330 330 " " West " " "  
330 330 Feet from North Line of Section  
 " " East " " "  
 " " South " " "  
330 330 " " West " " "

LEGEND

- LOCATION
- ⊕ DRILLING
- ☀ GAS WELL
- OIL WELL
- ⊙ SMALL OIL WELL
- ⊙ DRY HOLE
- DRY SHOWING OIL
- ☀ DRY SHOWING GAS
- ⊙ ABANDONED LOCATION
- ☀ ABANDONED GAS WELL
- ⊙ ABANDONED OIL WELL

NOTE: Below make tracing from map, (when no map is obtainable make sketch) showing farm, center of section, this location with measurements and also wells, dry holes, or other locations in the vicinity of this location.



REMARKS:

.....  
 .....

SIGNED

*R. L. Yeager*  
 Superintendent or Foreman.

Michigan Producing Division

Date 4/25/35 No. 533  
 State Michigan County Isabella Dist. Nottawa  
 (Serial No.) Twp. Nottawa Sec. 22 Twp. 15N Rge. 5W  
 Well No. 1 (County No.) 533 Farm Jacob Weber Acres \_\_\_\_\_  
 Operator W. J. Bernier Information secured ~~from~~ Scouting Dept. by \_\_\_\_\_  
 Date well started 3/28/35 Date well completed 4/20/35 Elevation 883.3'

PRODUCTION RECORD

1st 24 hours natural Dry Hole  
 2nd 24 hours natural \_\_\_\_\_  
 Date of shot \_\_\_\_\_ No. of quarts \_\_\_\_\_ From \_\_\_\_\_ to \_\_\_\_\_ From \_\_\_\_\_ to \_\_\_\_\_  
 Date of acid \_\_\_\_\_ No. of gallons \_\_\_\_\_  
 shot \_\_\_\_\_  
 1st 24 hours after acid \_\_\_\_\_  
 shot \_\_\_\_\_  
 2nd 24 hours after acid \_\_\_\_\_

FORMATION AND CASING RECORD

Formation	Top	Bottom	Top Pay	Bottom Pay	Remarks	Casing	
						Size	Set at
Stray	1370					10"	510'
Marshall	1482	S.L.M.				8 1/4"	792
Total Depth		1492 1/2			Salt Water 1487'	5-3/16"	1295'

Remarks \_\_\_\_\_  
 \_\_\_\_\_  
 \_\_\_\_\_  
 \_\_\_\_\_  
 \_\_\_\_\_

Signed J.H. Bell