



Western Michigan University
ScholarWorks at WMU

Legacy Scout Tickets from Pure Oil Company

8-20-2021

**MGRRE_PureOilScoutTickets_Gatehouse,
Leo_1_21073023790000**

MGRRE
Western Michigan University

Follow this and additional works at: <https://scholarworks.wmich.edu/pure>



Part of the Geology Commons

WMU ScholarWorks Citation

MGRRE, "MGRRE_PureOilScoutTickets_Gatehouse, Leo_1_21073023790000" (2021). *Legacy Scout Tickets from Pure Oil Company*. 3295.
<https://scholarworks.wmich.edu/pure/3295>

This Document is brought to you for free and open access via ScholarWorks at WMU. It has been accepted for inclusion in Legacy Scout Tickets from Pure Oil Company by an authorized administrator of ScholarWorks at WMU. See the National Digital Catalogue - Science Base Catalogue for more collections submitted by MGRRE.



MGRRE_PureOilScoutTickets_Gatehouse, Leo_1_21073023790000

API 21073023790000

Permit Number 2379

Lease Name Gatehouse, Leo

Well Number 1

County Isabella

Township 14N

Range 06W

Section 2

2021 DEQ or Pure co_name Bernier W. J

Pure Number 535

Latitude 43.63783

Longitude -84.99019

THE PURE OIL COMPANY

DATE March 14, 1935

LOCATION REPORT

No. 535

STATE Michigan COUNTY Isabella

DIST. Broomfield
TWP. Broomfield SEC. 2
PREC. Leo Gatehouse

TOWN 14N. RANGE 6W.

WELL No. 1 (SERIAL No. 535) FARM Leo Gatehouse ACRES

NAME OF STREAM OR WATERS

QUADRANGLE C-NE-NE
C-NE-NE

OPERATOR W. J. Bernier

Map Broomfield Township, Isabella County

660 660 Feet from North Line of Farm

660 660 " " East " " "

" " South " " "

" " West " " "

660 660 Feet from North Line of Section

660 660 " " East " " "

" " South " " "

" " West " " "

LEGEND

○ LOCATION

⊕ RIG

⊕ DRILLING

☀ GAS WELL

● OIL WELL

⊕ SMALL OIL WELL

⊕ DRY HOLE

⊕ DRY SHOWING OIL

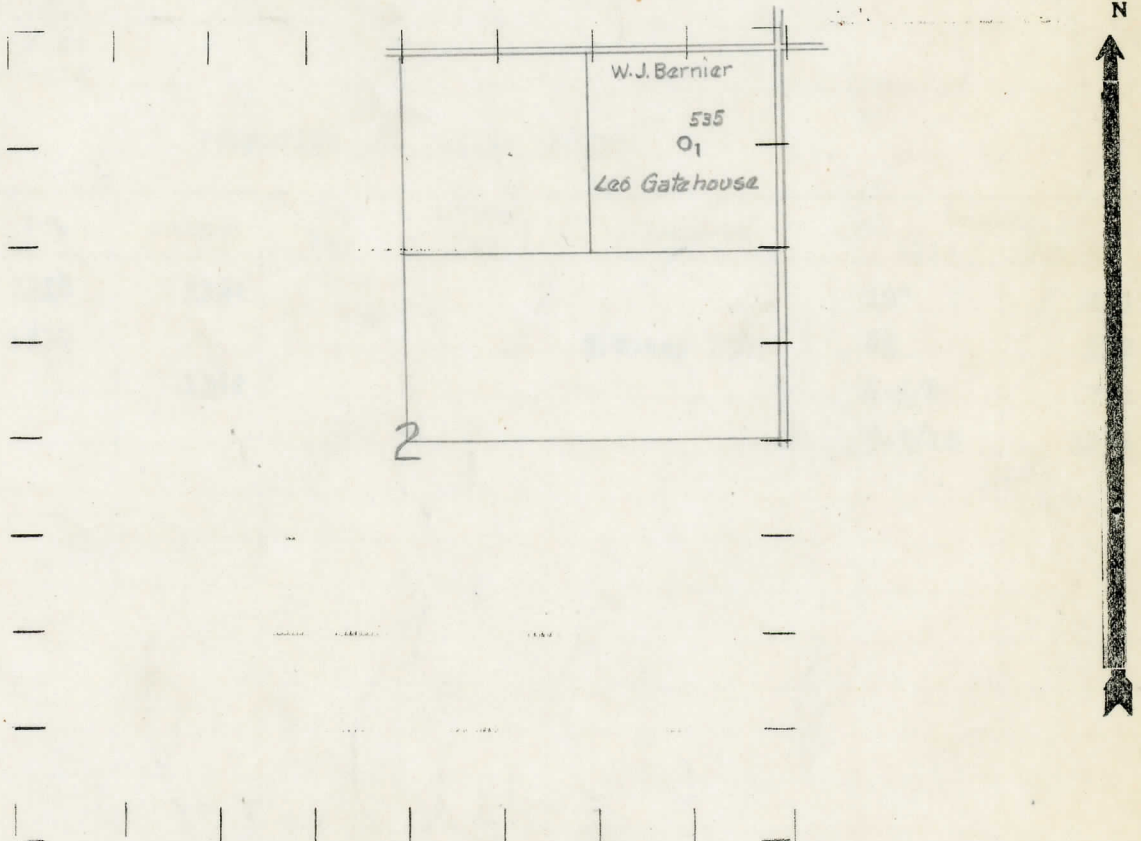
⊕ DRY SHOWING GAS

⊕ ABANDONED LOCATION

☀ ABANDONED GAS WELL

⊕ ABANDONED OIL WELL

NOTE: Below make tracing from map, (when no map is obtainable make sketch) showing farm, center of section, this location with measurements and also wells, dry holes, or other locations in the vicinity of this location.



REMARKS:

SIGNED

R. L. Yeager
Superintendent or Foreman.

