



Western Michigan University
ScholarWorks at WMU

Legacy Scout Tickets from Pure Oil Company

8-20-2021

MGRRE_PureOilScoutTickets_Bowman Estates_4_21073024240000

MGRRE

Western Michigan University

Follow this and additional works at: <https://scholarworks.wmich.edu/pure>



Part of the Geology Commons

WMU ScholarWorks Citation

MGRRE, "MGRRE_PureOilScoutTickets_Bowman Estates_4_21073024240000" (2021). *Legacy Scout Tickets from Pure Oil Company*. 3305.

<https://scholarworks.wmich.edu/pure/3305>

This Document is brought to you for free and open access via ScholarWorks at WMU. It has been accepted for inclusion in Legacy Scout Tickets from Pure Oil Company by an authorized administrator of ScholarWorks at WMU. See the National Digital Catalogue - Science Base Catalogue for more collections submitted by MGRRE.



MGRRE_PureOilScoutTickets_Bowman Estates_4_21073024240000

API 21073024240000

Permit Number 2424

Lease Name Bowman Estates

Well Number 4

County Isabella

Township 16N

Range 04W

Section 27

2021 DEQ or Pure co_name Morris, Vanjeuren Oil and Gas Syndicate

Pure Number 545

Latitude 43.75577

Longitude -84.78153

DATE April 18, 1935

LOCATION REPORT

No. 545

STATE Michigan COUNTY Isabella DIST. Vernon SEC. 27 TOWN 16N RANGE 4W
WELL No. 4 (SERIAL No. 545) FARM Bowman Estate Heirs ACRES

NAME OF STREAM OR WATERS _____ QUADRANGLE NW-NE-NW
NW-NE-NW

OPERATOR Morris-VanKeuren Oil & Gas Synd. Map Vernon Township, Isabella County
Morris-Van Keuren Oil & Gas Synd. Vernon - Isa.

330 330 Feet from North Line of Farm

990 990 " " East " " "

" " South " " "

" " West " " "

330 330 Feet from North Line of Section

990 990 " " East " " 1/4 "

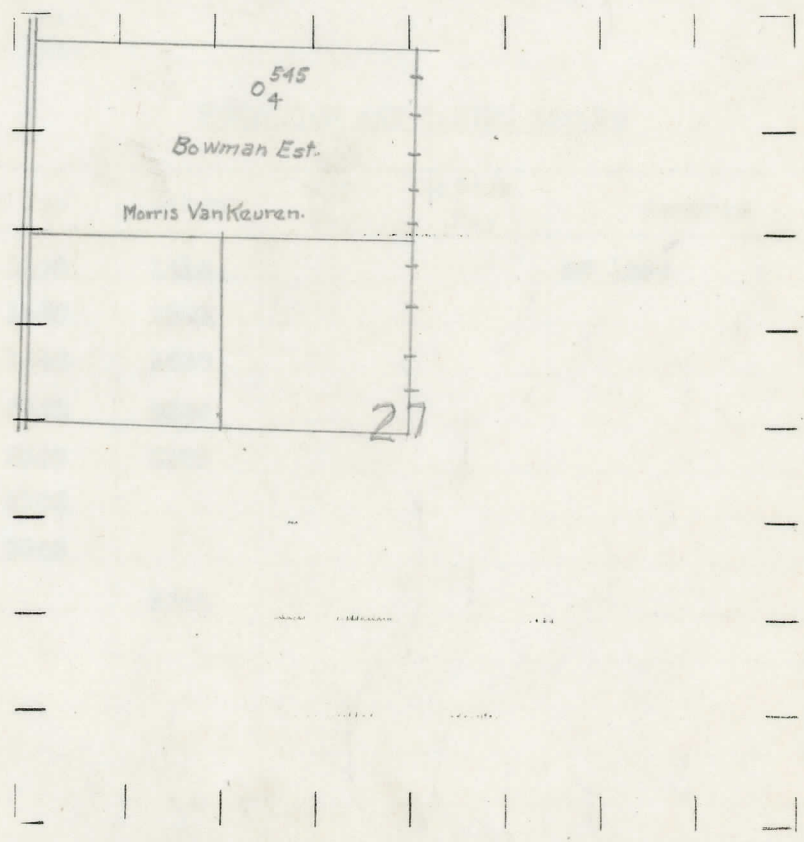
" " South " " "

" " West " " "

LEGEND

- LOCATION
- ⊕ RIG
- ⊕ DRILLING
- ☀ GAS WELL
- OIL WELL
- ⊕ SMALL OIL WELL
- ⊕ DRY HOLE
- ⊕ DRY SHOWING OIL
- ⊕ DRY SHOWING GAS
- ⊕ ABANDONED LOCATION
- ☀ ABANDONED GAS WELL
- ⊕ ABANDONED OIL WELL

NOTE: Below make tracing from map, (when no map is obtainable make sketch) showing farm, center of section, this location with measurements and also wells, dry holes, or other locations in the vicinity of this location.



REMARKS:

SIGNED

R. L. Yeager
Superintendent or Foreman.

PRODUCTION RECORD OF WELLS DRILLED BY OTHER OPERATORS

Michigan Producing Division

Date 10/31/35 No. 545
 State Michigan County Isabella Dist. Vernon
 (Serial No.) Twp. Sec. 27 Twp. 16 N Rge. 4 W
 Well No. 4 (County No.) 545 Farm J. A. Bowman Est. Acres
 Operator Morris Van Kueren O&G Co. Information secured from Scouting Dept.,
 Date well started 7/22/35 Date well completed 10/4/35 Elevation 839

PRODUCTION RECORD

1st 24 hours natural Dry Hole
 2nd 24 hours natural
 Date of shot No. of quarts From to From to
 Date of acid No. of gallons
 shot
 1st 24 hours after acid
 shot
 2nd 24 hours after acid

FORMATION AND CASING RECORD

Formation	Top	Bottom	Top Pay	Bottom Pay	Remarks	Casing	
						Size	Set at
Stray	1390	1412			SW 1396	10"	455
Marshall	1430	1540				8-1/4"	1033
Red Rock	1540	1635				6-5/8"	1642
Berea	2525	2540				5-3/16"	3763
Antrim	2590	3105					
Traverse	3105						
Dundee	3755						
Total Depth		3766					

Remarks Show oil 3755 1/2. Salt Water 3755. Black Salt Water 3759-3766.

Signed J. H. Bell