



Western Michigan University
ScholarWorks at WMU

Legacy Scout Tickets from Pure Oil Company

8-20-2021

MGRRE_PureOilScoutTickets_Border et al_1_21073024550000

MGRRE

Western Michigan University

Follow this and additional works at: <https://scholarworks.wmich.edu/pure>



Part of the Geology Commons

WMU ScholarWorks Citation

MGRRE, "MGRRE_PureOilScoutTickets_Border et al_1_21073024550000" (2021). *Legacy Scout Tickets from Pure Oil Company*. 3310.

<https://scholarworks.wmich.edu/pure/3310>

This Document is brought to you for free and open access via ScholarWorks at WMU. It has been accepted for inclusion in Legacy Scout Tickets from Pure Oil Company by an authorized administrator of ScholarWorks at WMU. See the National Digital Catalogue - Science Base Catalogue for more collections submitted by MGRRE.



MGRRE_PureOilScoutTickets_Border et al_1_21073024550000

API 21073024550000

Permit Number 2455

Lease Name Border et al

Well Number 1

County Isabella

Township 16N

Range 04W

Section 31

2021 DEQ or Pure co_name O'Neal O. H.

Pure Number 550

Latitude 43.72919

Longitude -84.83038

DATE May 2, 1935

LOCATION REPORT

No. 550

STATE Michigan COUNTY Isabella DIST. Vernon SEC. 31 TOWN 16N RANGE 4W

WELL No. 1 (SERIAL No. 550) FARM John Y. Border et al ACRES

NAME OF STREAM OR WATERS QUADRANGLE C-SE-SE
C-SE-SE

OPERATOR O. H. O'Neal Map Vernon Township, Isabella County
O. H. O'Neal Vernon - Isabella

Feet from North Line of Farm
660 660 " " East " " "

660 660 " " South " " "
" " West " " "

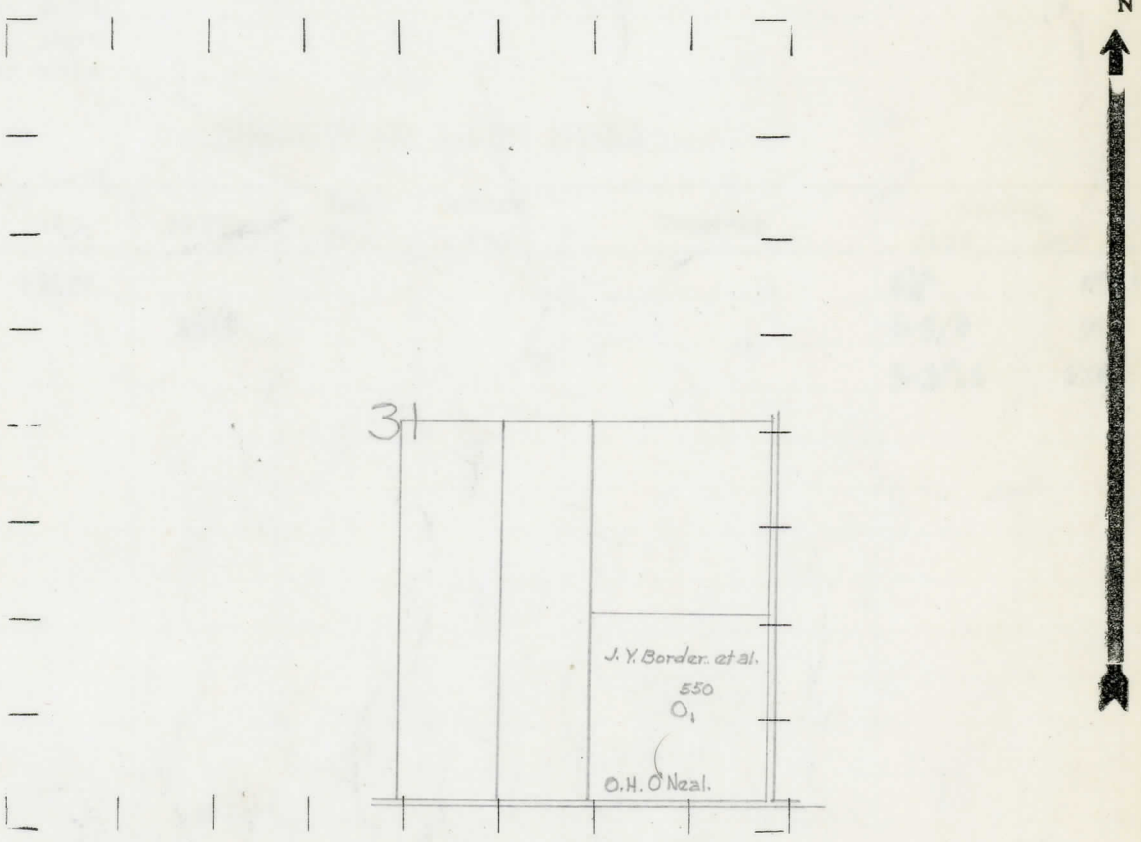
Feet from North Line of Section
660 660 " " East " " "

660 660 " " South " " "
" " West " " "

LEGEND

- LOCATION
- ⊕ DRILLING
- ⊗ GAS WELL
- OIL WELL
- ⊙ SMALL OIL WELL
- ⊖ DRY HOLE
- ⊕ DRY SHOWING OIL
- ⊗ DRY SHOWING GAS
- ⊖ ABANDONED LOCATION
- ⊗ ABANDONED GAS WELL
- ⊙ ABANDONED OIL WELL

NOTE: Below make tracing from map, (when no map is obtainable make sketch) showing farm, center of section, this location with measurements and also wells, dry holes, or other locations in the vicinity of this location.



REMARKS:
.....
.....
.....

SIGNED R. L. Yeager
Superintendent or Foreman.

