



Western Michigan University
ScholarWorks at WMU

Legacy Scout Tickets from Pure Oil Company

8-20-2021

MGRRE_PureOilScoutTickets_Prout, Asa_1_21073025290000

MGRRE

Western Michigan University

Follow this and additional works at: <https://scholarworks.wmich.edu/pure>



Part of the Geology Commons

WMU ScholarWorks Citation

MGRRE, "MGRRE_PureOilScoutTickets_Prout, Asa_1_21073025290000" (2021). *Legacy Scout Tickets from Pure Oil Company*. 3317.

<https://scholarworks.wmich.edu/pure/3317>

This Document is brought to you for free and open access via ScholarWorks at WMU. It has been accepted for inclusion in Legacy Scout Tickets from Pure Oil Company by an authorized administrator of ScholarWorks at WMU. See the National Digital Catalogue - Science Base Catalogue for more collections submitted by MGRRE.



MGRRE_PureOilScoutTickets_Prout, Asa_1_21073025290000

API 21073025290000

Permit Number 2529

Lease Name Prout, Asa

Well Number 1

County Isabella

Township 15N

Range 04W

Section 12

2021 DEQ or Pure co_name Summit Petroleum Corporation

Pure Number 557

Latitude 43.7006382

Longitude -84.7341983

THE PURE OIL COMPANY
COMPLETION RECORD OF WELLS DRILLED BY OTHER OPERATORS

DATE 5-31-35

LOCATION REPORT

No. 557

STATE Michigan COUNTY Isabella DIST. Isabella TWP. Isabella SEC. 12 TOWN 15-N RANGE 4-W

WELL No. 1 (SERIAL No. 557) FARM Asa Prout 40 ACRES

NAME OF STREAM OR WATERS QUADRANGLE C. E. - SW - SE

OPERATOR Chartiers Oil Co. Map 2 Isabella Twp. Isabella County

Feet from North Line of Farm

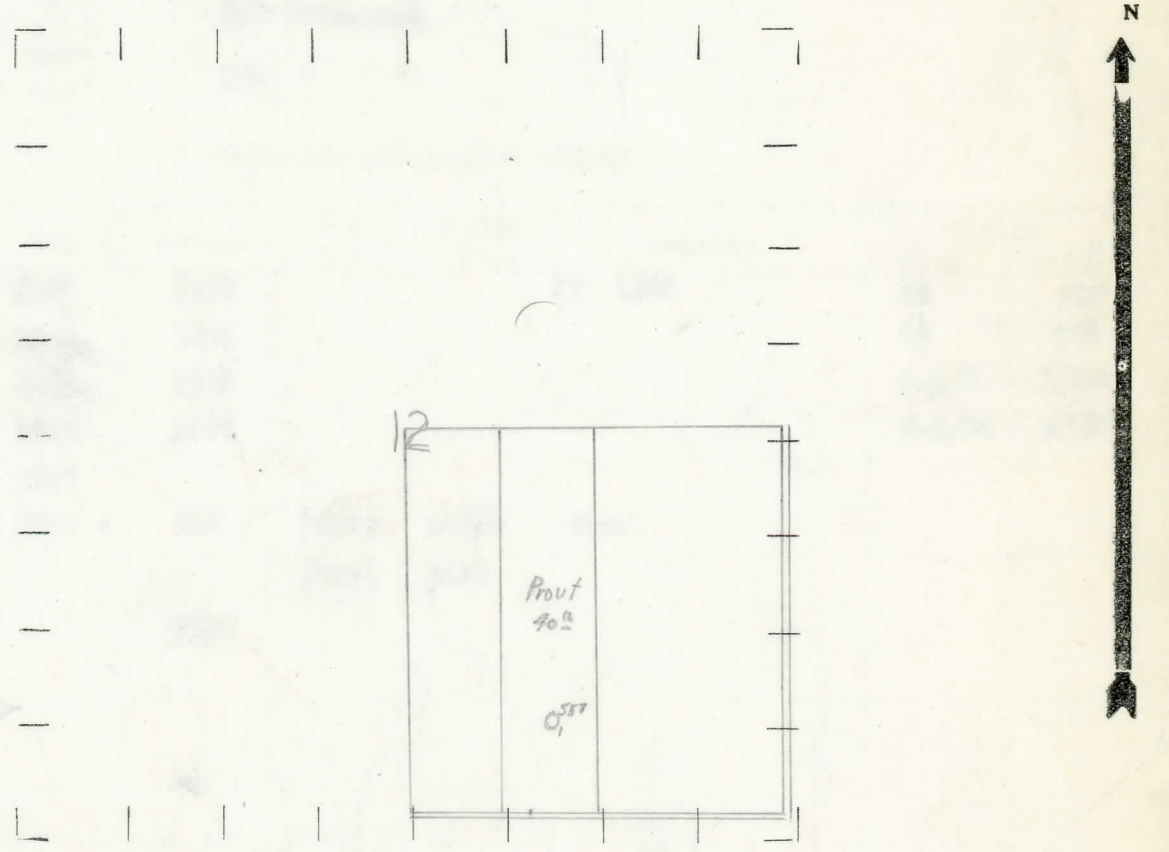
330 " " East " " "
660 " " South " " "
330 " " West " " "

Feet from North Line of Section

660 " " East " " "
660 " " South " " "
990 " " West " " 1/4

- LEGEND**
- LOCATION
 - ⊕ DRILLING
 - ☀ GAS WELL
 - OIL WELL
 - ⦿ SMALL OIL WELL
 - ⊖ DRY HOLE
 - ⦿ DRY SHOWING OIL
 - ⊖ DRY SHOWING GAS
 - ⊖ ABANDONED LOCATION
 - ☀ ABANDONED GAS WELL
 - ⦿ ABANDONED OIL WELL

NOTE: Below make tracing from map, (when no map is obtainable make sketch) showing farm, center of section, this location with measurements and also wells, dry holes, or other locations in the vicinity of this location.



REMARKS:

SIGNED *R. L. Yeager*
Superintendent or Foreman.

Michigan Producing Division

Date **8-8-35** No. **557**
 State **Michigan** County **Isabella** Dist. **Isabella**
 (Serial No.) Twp. **Isabella** Sec. **12** Twp. **15 N** Rge. **4 W**
 Well No. **1** (County No.) **557** Farm **Asa Prout** Acres _____
 Operator **Chartiers Oil Co.** Information secured ~~from~~ by **Scouting Dept.**
 Date well started **6-5-35** Date well completed **7-21-35** Elevation _____

PRODUCTION RECORD

1st 24 hours natural **Est. 10 bbls.**
 2nd 24 hours natural _____
 Date of shot _____ No. of quarts _____ From _____ to _____ From _____ to _____
 Date of acid **7-30-35** No. of gallons **1000**
 1st 24 hours after acid ~~shot~~ **238 bbls. net**
 2nd 24 hours after acid ~~shot~~ **186 " "**

FORMATION AND CASING RECORD

| Formation | Top | Bottom | Top Pay | Bottom Pay | Remarks | Casing | |
|-------------|------|--------|----------|------------|---------|--------|--------|
| | | | | | | Size | Set at |
| Stray | 1300 | 1330 | | | SW 1300 | 10 | 437 |
| Marshall | 1360 | 1455 | | | | 8 1/4 | 960 |
| Red Rock | 1455 | 1548 | | | | 6-5/8 | 1560 |
| Antrim | 2505 | 3007 | | | | 5-3/16 | 3654 |
| Traverse | 3007 | | | | | | |
| Dundee | 3639 | SLM | 3681 1/2 | 3686 1/2 | Show | | |
| | | | 3692 1/2 | 3695 | | | |
| Total Depth | | 3702 | | | | | |

Remarks _____

Signed _____