



Western Michigan University
ScholarWorks at WMU

Legacy Scout Tickets from Pure Oil Company

8-20-2021

MGRRE_PureOilScoutTickets_Mcfarlane_1_21073026200000

MGRRE

Western Michigan University

Follow this and additional works at: <https://scholarworks.wmich.edu/pure>



Part of the Geology Commons

WMU ScholarWorks Citation

MGRRE, "MGRRE_PureOilScoutTickets_Mcfarlane_1_21073026200000" (2021). *Legacy Scout Tickets from Pure Oil Company*. 3327.

<https://scholarworks.wmich.edu/pure/3327>

This Document is brought to you for free and open access via ScholarWorks at WMU. It has been accepted for inclusion in Legacy Scout Tickets from Pure Oil Company by an authorized administrator of ScholarWorks at WMU. See the National Digital Catalogue - Science Base Catalogue for more collections submitted by MGRRE.



MGRRE_PureOilScoutTickets_Mcfarlane_1_21073026200000

API 21073026200000

Permit Number 2620

Lease Name Mcfarlane

Well Number 1

County Isabella

Township 15N

Range 04W

Section 1

2021 DEQ or Pure co_name Tope, Robert L. Manager

Pure Number 567

Latitude 43.72623

Longitude -84.7356

The Pure Oil Company
THE PURE OIL COMPANY

2620
A

DATE July 26, 1935
7/25/35

LOCATION REPORT

No. 567

STATE Mich. COUNTY Isabella DIST. Isabella SEC. 1 TOWN 15-N RANGE 4-W
Michigan Isabella Isabella 1 15N 4W

WELL No. 1 (SERIAL No. 567) FARM J. McFarlane ACRES

NAME OF STREAM OR WATERS _____ QUADRANGLE C-NW-NE
Robert L. Tope C-NW-NE

OPERATOR Robert L. Tope Map Isabella Twp - Isabella Co.
Robert L. Tope Isabella Township, Isabella County

660 660 Feet from North Line of Farm

“ “ East “ “ “

“ “ South “ “ “

660 660 “ “ West “ “ “

660 660 Feet from North Line of Section

“ “ East “ “ “

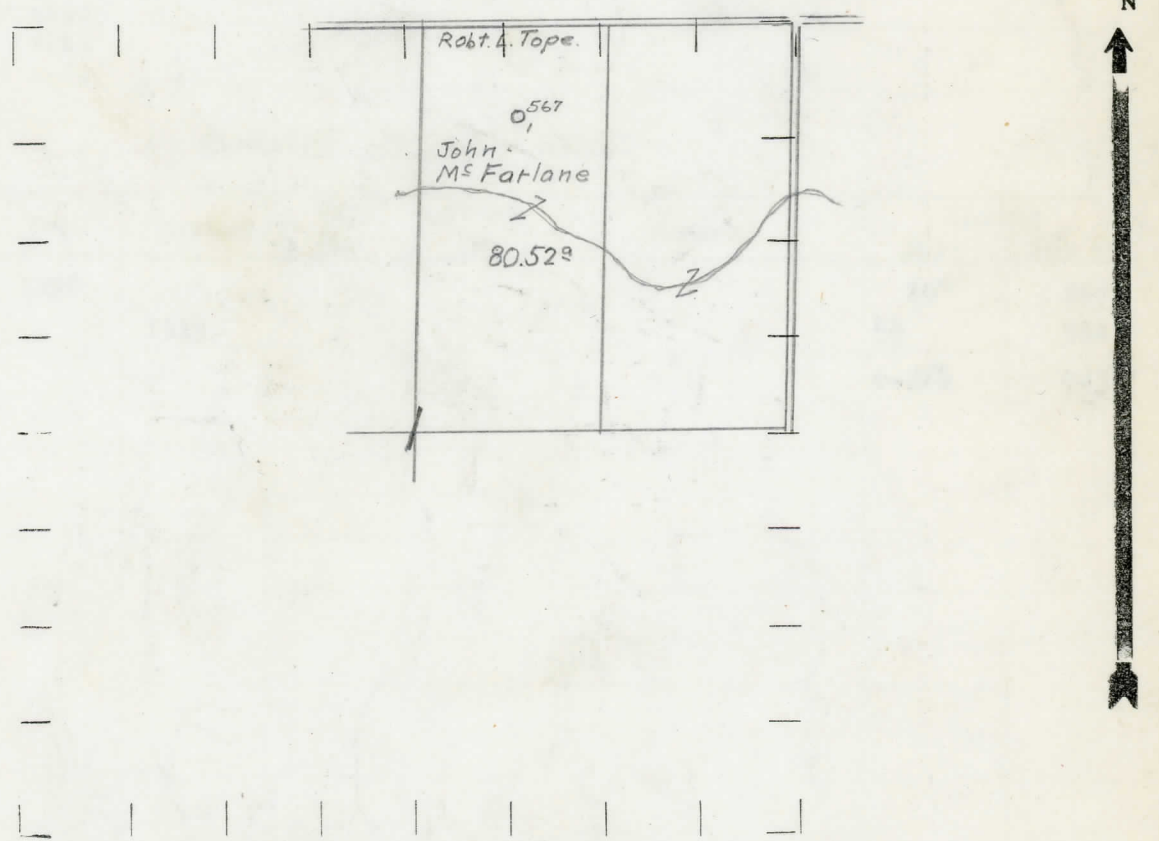
“ “ South “ “ “

660 660 “ “ West “ “ 1/4 “

LEGEND

- LOCATION
- ⊕ RIG
- ⊕ DRILLING
- ☀ GAS WELL
- OIL WELL
- ⊕ SMALL OIL WELL
- ⊖ DRY HOLE
- ⊕ DRY SHOWING OIL
- ⊖ DRY SHOWING GAS
- ⊖ ABANDONED LOCATION
- ☀ ABANDONED GAS WELL
- ⊖ ABANDONED OIL WELL

NOTE: Below make tracing from map, (when no map is obtainable make sketch) showing farm, center of section, this location with measurements and also wells, dry holes, or other locations in the vicinity of this location.



REMARKS:

SIGNED

B. R. Yeager
Superintendent or Foreman.

