



Western Michigan University
ScholarWorks at WMU

Legacy Scout Tickets from Pure Oil Company

8-20-2021

MGRRE_PureOilScoutTickets_West John B_1_2107302760000

MGRRE

Western Michigan University

Follow this and additional works at: <https://scholarworks.wmich.edu/pure>



Part of the Geology Commons

WMU ScholarWorks Citation

MGRRE, "MGRRE_PureOilScoutTickets_West John B_1_2107302760000" (2021). *Legacy Scout Tickets from Pure Oil Company*. 3333.

<https://scholarworks.wmich.edu/pure/3333>

This Document is brought to you for free and open access via ScholarWorks at WMU. It has been accepted for inclusion in Legacy Scout Tickets from Pure Oil Company by an authorized administrator of ScholarWorks at WMU. See the National Digital Catalogue - Science Base Catalogue for more collections submitted by MGRRE.



MGRRE_PureOilScoutTickets_West John B_1_21073027600000

API 21073027600000

Permit Number 2760

Lease Name West John B

Well Number 1

County Isabella

Township 15N

Range 04W

Section 12

2021 DEQ or Pure co_name Cain, Glen

Pure Number 573

Latitude 43.69981

Longitude -84.7293

THE PURE OIL COMPANY

LOCATION REPORT

No. 573

DATE 9/19/35

STATE Michigan COUNTY Isabella DIST. Isabella TWP. Isabella SEC. 12 TOWN 15N RANGE 4W

WELL No. 1 (SERIAL No. 573) FARM John West ACRES

NAME OF STREAM OR WATERS QUADRANGLE SE-SE-SE

OPERATOR Chartiers Oil Company Map Isabella Township, Isabella County

Feet from North Line of Farm

330 330 " " East " " "

330 330 " " South " " "

" " West " " "

Feet from North Line of Section

330 330 " " East " " "

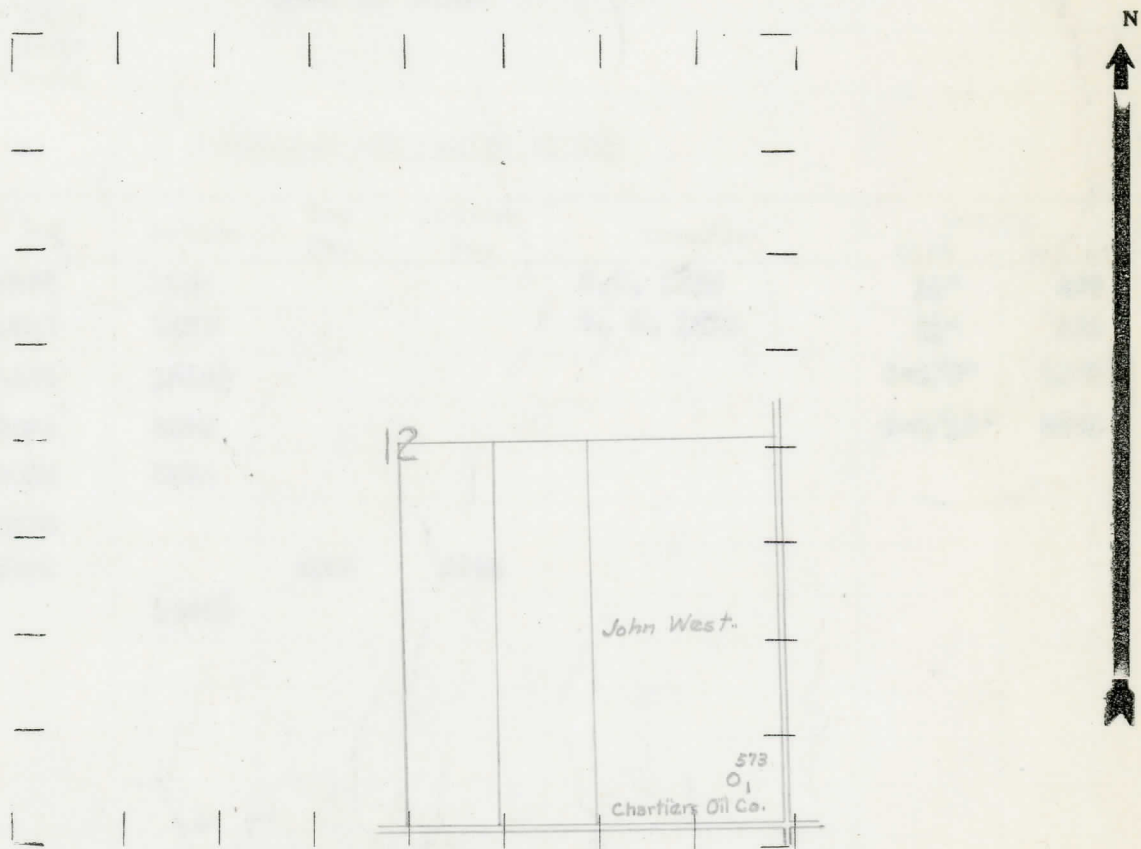
330 330 " " South " " "

" " West " " "

LEGEND

- LOCATION, RIG, DRILLING, GAS WELL, OIL WELL, SMALL OIL WELL, DRY HOLE, DRY SHOWING OIL, DRY SHOWING GAS, ABANDONED LOCATION, ABANDONED GAS WELL, ABANDONED OIL WELL

NOTE: Below make tracing from map, (when no map is obtainable make sketch) showing farm, center of section, this location with measurements and also wells, dry holes, or other locations in the vicinity of this location.



REMARKS:

SIGNED

R. L. Yager Superintendent or Foreman

COMPLETION RECORD OF WELLS DRILLED BY OTHER OPERATORS

Michigan Producing Division

Date **December 5, 1935** No. **573**
 State **Mich.** County **Isabella** Dist. **Isabella** Twp. **Isabella** Sec. **12** Twp. **15N** Rge. **4 W**
 Well No. **1** (Serial No.) **573** Farm **John B. West** Acres _____
 Operator **Chartiers Oil Co.** Information secured ~~from~~ ^{by} **Scouting Dept.**
 Date well started **9-18-35** Date well completed **11-3-35** Elevation **760'**

PRODUCTION RECORD

1st 24 hours natural **Est. 5 bbls.**
 2nd 24 hours natural _____
 Date of shot _____ No. of quarts _____ From _____ to _____ From _____ to _____
 Date of acid **11-26-35** No. of gallons **1000**
 shot _____
 1st 24 hours after acid **Est. 25 bbls.**
 shot _____
 2nd 24 hours after acid _____

FORMATION AND CASING RECORD

Formation	Top	Bottom	Top Pay	Bottom Pay	Remarks	Casing	
						Size	Set at
Stray	1306	1324			S.W. 1306	10"	437
Marshall	1338	1453			S. W. 1338	8 1/2"	970
Red Rock	1453	1544 1/2				6-5/8"	1555
Berea	2490	2495				5-3/16"	3670
Antrim	2495	3008					
Traverse	3008						
Dundee	3660		3700	3703			
Total Depth		3709 1/2					

Remarks **Show gas 3698.**

Signed *G.H. Bell*