



Western Michigan University
ScholarWorks at WMU

Legacy Scout Tickets from Pure Oil Company

8-20-2021

MGRRE_PureOilScoutTickets_Murphy, John_1_21073029110000

MGRRE

Western Michigan University

Follow this and additional works at: <https://scholarworks.wmich.edu/pure>



Part of the Geology Commons

WMU ScholarWorks Citation

MGRRE, "MGRRE_PureOilScoutTickets_Murphy, John_1_21073029110000" (2021). *Legacy Scout Tickets from Pure Oil Company*. 3336.

<https://scholarworks.wmich.edu/pure/3336>

This Document is brought to you for free and open access via ScholarWorks at WMU. It has been accepted for inclusion in Legacy Scout Tickets from Pure Oil Company by an authorized administrator of ScholarWorks at WMU. See the National Digital Catalogue - Science Base Catalogue for more collections submitted by MGRRE.



MGRRE_PureOilScoutTickets_Murphy, John_1_21073029110000

API 21073029110000

Permit Number 2911

Lease Name Murphy, John

Well Number 1

County Isabella

Township 14N

Range 05W

Section 12

2021 DEQ or Pure co_name Aber, J.C.

Pure Number 577

Latitude 43.61806

Longitude -84.86687

DATE November 21, 1935

LOCATION REPORT

No. 577

STATE Mich.

COUNTY Isabella

DIST. Deerfield

SEC. 12

TOWN 14 N

RANGE 5 W

WELL No. 1 (SERIAL No. 577) FARM

PREC. John Murphy

ACRES

NAME OF STREAM OR WATERS

QUADRANGLE

NW-NW-SW
NW-NW-SW

OPERATOR J. C. Abner

Map

Deerfield Twp. - Isabella County

330 330

Feet from North Line of Farm

" " East " " "

" " South " " "

330 330

" " West " " "

330 330

Feet from North Line of Section

" " East " " "

" " South " " "

330 330

" " West " " "

LEGEND

○ LOCATION

⊕ RIG

⊕ DRILLING

☀ GAS WELL

● OIL WELL

⬮ SMALL OIL WELL

⊖ DRY HOLE

⬮ DRY SHOWING OIL

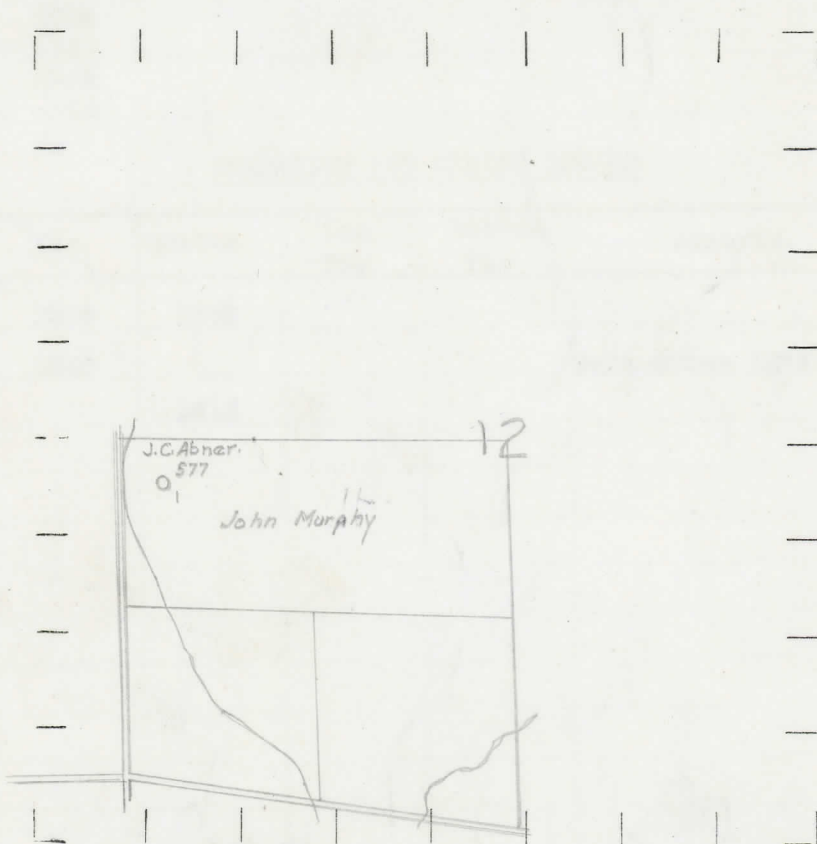
⊖ DRY SHOWING GAS

⊖ ABANDONED LOCATION

☀ ABANDONED GAS WELL

⬮ ABANDONED OIL WELL

NOTE: Below make tracing from map, (when no map is obtainable make sketch) showing farm, center of section, this location with measurements and also wells, dry holes, or other locations in the vicinity of this location.



REMARKS:

SIGNED

R. L. Yeager
Superintendent or Foreman.

