



Western Michigan University  
ScholarWorks at WMU

---

Legacy Scout Tickets from Pure Oil Company

---

8-20-2021

## MGRRE\_PureOilScoutTickets\_Myers\_1\_na

MGRRE

*Western Michigan University*

Follow this and additional works at: <https://scholarworks.wmich.edu/pure>



Part of the Geology Commons

---

### WMU ScholarWorks Citation

MGRRE, "MGRRE\_PureOilScoutTickets\_Myers\_1\_na" (2021). *Legacy Scout Tickets from Pure Oil Company*. 3364.

<https://scholarworks.wmich.edu/pure/3364>

This Document is brought to you for free and open access via ScholarWorks at WMU. It has been accepted for inclusion in Legacy Scout Tickets from Pure Oil Company by an authorized administrator of ScholarWorks at WMU. See the National Digital Catalogue - Science Base Catalogue for more collections submitted by MGRRE.



---

**MGRRE\_PureOilScoutTickets\_Myers\_1\_na**

API na

Permit Number na

Lease Name Myers

Well Number 1

County Isabella

Township 14N

Range 04W

Section 24

2021 DEQ or Pure co\_name Robbins & Hanes

Pure Number 607

Latitude 43.5899282

Longitude -84.7375837

DATE August 13, 1936

LOCATION REPORT

No. 607

STATE Michigan COUNTY Isabella DIST. Union TWP. Union SEC. 24 TOWN 14N RANGE 4W

WELL No. 1 (SERIAL No. 607) FARM Stacy Myers Myers ACRES

NAME OF STREAM OR WATERS \_\_\_\_\_ QUADRANGLE NW-35-NW  
NW SE NW

OPERATOR Charles A. Robbins & R. D. Hance Map Union Township, Isabella County  
Chas. A. Robbins & R. D. Hance Union-Isabella

330 Feet from North Line of Farm

990 " " East " " "

" " South " " "

" " West " " "

Feet from North Line of Section

990 " " East " 1/4 "

990 " " South " 1/4 "

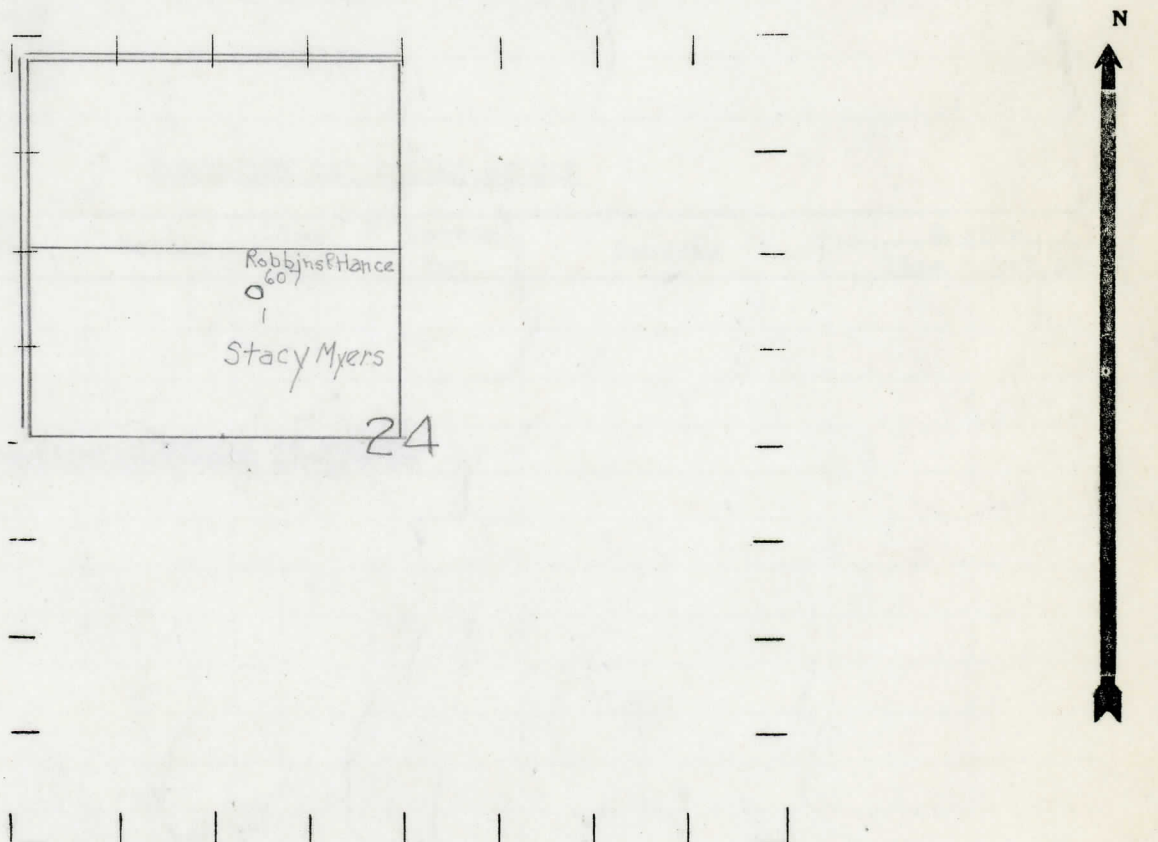
" " West " " "

LEGEND

- LOCATION
- ⊕ RIG
- ⊕ DRILLING
- ☀ GAS WELL
- OIL WELL
- ⬮ SMALL OIL WELL

- ⊙ DRY HOLE
- DRY SHOWING OIL
- ☀ DRY SHOWING GAS
- ⊙ ABANDONED LOCATION
- ☀ ABANDONED GAS WELL
- ABANDONED OIL WELL

NOTE: Below make tracing from map, (when no map is obtainable make sketch) showing farm, center of section, this location with measurements and also wells, dry holes, or other locations in the vicinity of this location.



REMARKS: \_\_\_\_\_  
\_\_\_\_\_  
\_\_\_\_\_

SIGNED R. D. Yeager  
Superintendent or Foreman.

COMPLETION RECORD OF WELLS DRILLED BY OTHER OPERATORS

Michigan Producing Division

Date November 19, 1936 No. 607
State Michigan County Isabella Dist. Union
Twp. Union Sec. 24 Twp. 14 N Rge. 4 W
Well No. 1 (Serial No.) (County No.) 607 Farm Stacy Myers Acres
Operator Charles Robbins & Hance Information secured from Scouting Department by

Date well started Not started Date well completed Not completed Elevation 788.2

PRODUCTION RECORD

1st 24 hours natural Location abandoned.
2nd 24 hours natural
Date of shot No. of quarts From to From to
Date of acid No. of gallons
1st 24 hours after acid shot
2nd 24 hours after acid shot

FORMATION AND CASING RECORD

Table with columns: Formation, Top, Bottom, Top Pay, Bottom Pay, Remarks, Casing Size, Casing Set At. Includes entry: Location abandoned 11-17-36.

Remarks

Signed