



Western Michigan University
ScholarWorks at WMU

Legacy Scout Tickets from Pure Oil Company

8-20-2021

**MGRRE_PureOilScoutTickets_Regan, Pat and Mahar,
John_1_21073036850000**

MGRRE
Western Michigan University

Follow this and additional works at: <https://scholarworks.wmich.edu/pure>



Part of the Geology Commons

WMU ScholarWorks Citation

MGRRE, "MGRRE_PureOilScoutTickets_Regan, Pat and Mahar, John_1_21073036850000" (2021). *Legacy Scout Tickets from Pure Oil Company*. 3392.
<https://scholarworks.wmich.edu/pure/3392>

This Document is brought to you for free and open access via ScholarWorks at WMU. It has been accepted for inclusion in Legacy Scout Tickets from Pure Oil Company by an authorized administrator of ScholarWorks at WMU. See the National Digital Catalogue - Science Base Catalogue for more collections submitted by MGRRE.



MGRRE_PureOilScoutTickets_Regan, Pat and Mahar, John_1_21073036850000

API 21073036850000

Permit Number 3685

Lease Name Regan, Pat and Mahar, John

Well Number 1

County Isabella

Township 16N

Range 04W

Section 36

2021 DEQ or Pure co_name Caldwell, T F

Pure Number 639

Latitude 43.74158

Longitude -84.74645

DATE ¹¹⁻¹⁹⁻³⁶ November 19, 1936

LOCATION REPORT

No. 639

STATE Michigan COUNTY Isabella DIST. Vernon SEC. 36 TOWN 16 N RANGE 4 W
WELL No. 1 (SERIAL No. 639) FARM Pat Regan & John Mahar ACRES

NAME OF STREAM OR WATERS QUADRANGLE NW NW NW

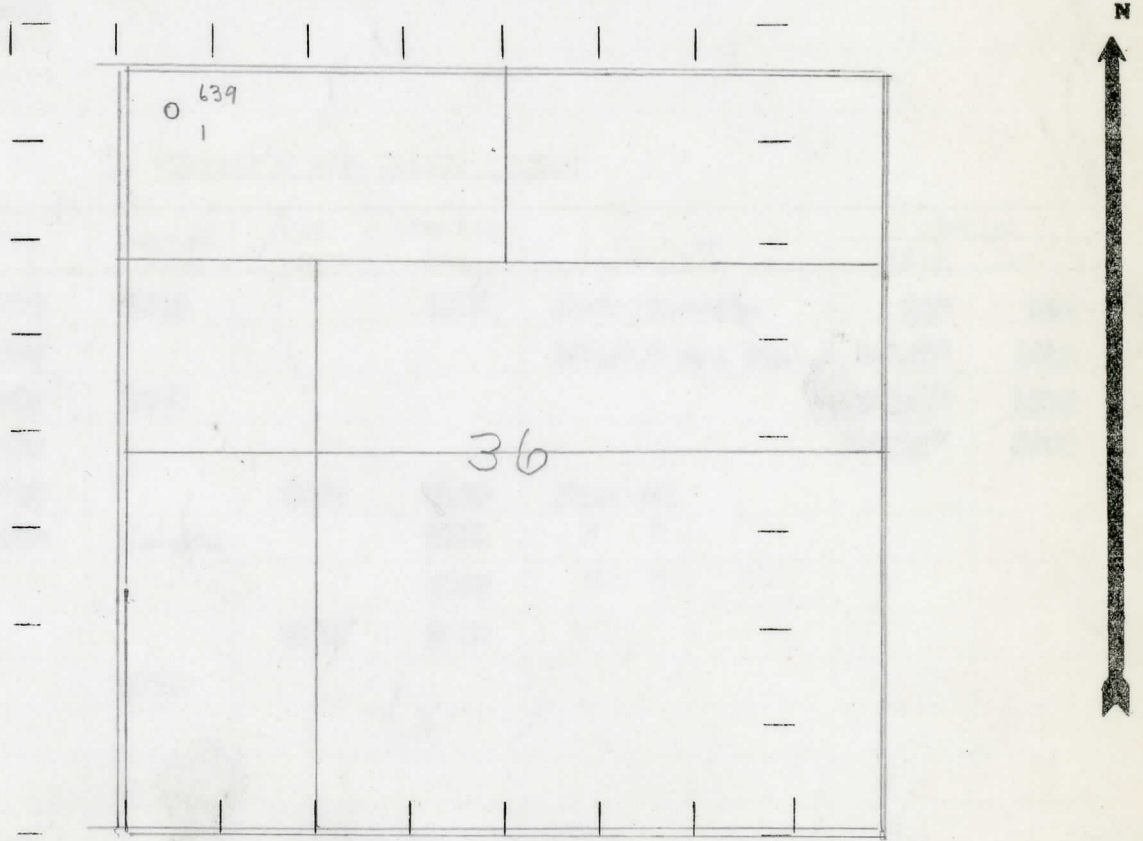
OPERATOR T. F. Caldwell, Inc. Map Vernon Township, Isabella County

330 Feet from North Line of Farm
" " East " " "
" " South " " "
330 " " West " " "
330 Feet from North Line of Section
" " East " " "
" " South " " "
330 " " West " " "

LEGEND

- LOCATION
- ⊕ RIG
- ⊕ DRILLING
- ☀ GAS WELL
- OIL WELL
- ◆ SMALL OIL WELL
- ⊙ DRY HOLE
- ◆ DRY SHOWING OIL
- ☀ DRY SHOWING GAS
- ⊙ ABANDONED LOCATION
- ☀ ABANDONED GAS WELL
- ◆ ABANDONED OIL WELL

NOTE: Below make tracing from map, (when no map is obtainable make sketch) showing farm, center of section, this location with measurements and also wells, dry holes, or other locations in the vicinity of this location.



REMARKS:

SIGNED

R. L. Yeager
Superintendent or Foreman. 8

COMPLETION RECORD OF WELLS DRILLED BY OTHER OPERATORS

Michigan Producing Division

Date March 18, 1937 No. 639
 State Michigan County Isabella Dist. Vernon Twp. 16 N Rge. 4 W
 Well No. 1 (Serial No.) (County No.) 639 Farm Regan and Mahar Acres _____
 Operator T. F. Caldwell, Inc. Information secured ~~from~~ Scouting Department by _____
 Date well started 11-29-36 Date well completed 2-5-37 Elevation 790.2

PRODUCTION RECORD

1st 24 hours natural Dry Hole
 2nd 24 hours natural _____
 Date of shot _____ No. of quarts _____ From _____ to _____ From _____ to _____
 Date of acid 5-9-37 No. of gallons 200
 shot _____
 1st 24 hours after acid _____
 shot _____
 2nd 24 hours after acid _____

FORMATION AND CASING RECORD

Formation	Top	Bottom	Top Pay	Bottom Pay	Remarks	Casing	
						Size	Set At
Stray Sand	1298	1310		1300	Show gas-est.	10"	396
Marshall	1350				100,000 cu. ft.	8-1/4"	1012
Red Rock	1465	1550				6-5/8"	1575
Antrim	2520					5-3/16"	3090
Traverse	3022		3165	3170	Show oil		
Dundee	3688	S.L.M.		3731	" "		
				3746	" "		
			3746	3750			
Total Depth		3755					

Remarks Salt water 1318-drilled into salt water.

Signed Geo. H. Bell