



Western Michigan University
ScholarWorks at WMU

Legacy Scout Tickets from Pure Oil Company

8-20-2021

MGRRE_PureOilScoutTickets_Merrihew O_1_21073037130000

MGRRE

Western Michigan University

Follow this and additional works at: <https://scholarworks.wmich.edu/pure>



Part of the Geology Commons

WMU ScholarWorks Citation

MGRRE, "MGRRE_PureOilScoutTickets_Merrihew O_1_21073037130000" (2021). *Legacy Scout Tickets from Pure Oil Company*. 3396.

<https://scholarworks.wmich.edu/pure/3396>

This Document is brought to you for free and open access via ScholarWorks at WMU. It has been accepted for inclusion in Legacy Scout Tickets from Pure Oil Company by an authorized administrator of ScholarWorks at WMU. See the National Digital Catalogue - Science Base Catalogue for more collections submitted by MGRRE.



MGRRE_PureOilScoutTickets_Merrihew O_1_21073037130000

API 21073037130000

Permit Number 3713

Lease Name Merrihew O

Well Number 1

County Isabella

Township 15N

Range 06W

Section 28

2021 DEQ or Pure co_name Turner Petroleum Corporation

Pure Number 643

Latitude 43.66215

Longitude -85.03884

THE PURE OIL COMPANY

DATE December 3, 1936

LOCATION REPORT

No. 643

STATE Michigan COUNTY Isabella DIST. TWP. Sherman SEC. 28 TOWN. 15 N RANGE 6 W

WELL No. 1 1 (SERIAL No. 643) FARM O. Merrihew ACRES

NAME OF STREAM OR WATERS _____ QUADRANGLE SE SE NW

OPERATOR Turner Petroleum Corporation Map Sherman Township, Isabella County

Feet from North Line of Farm

330 330 " " East " " "

330 330 " " South " " "

" " West " " "

Feet from North Line of Section

330 330 " " East " 1/4 "

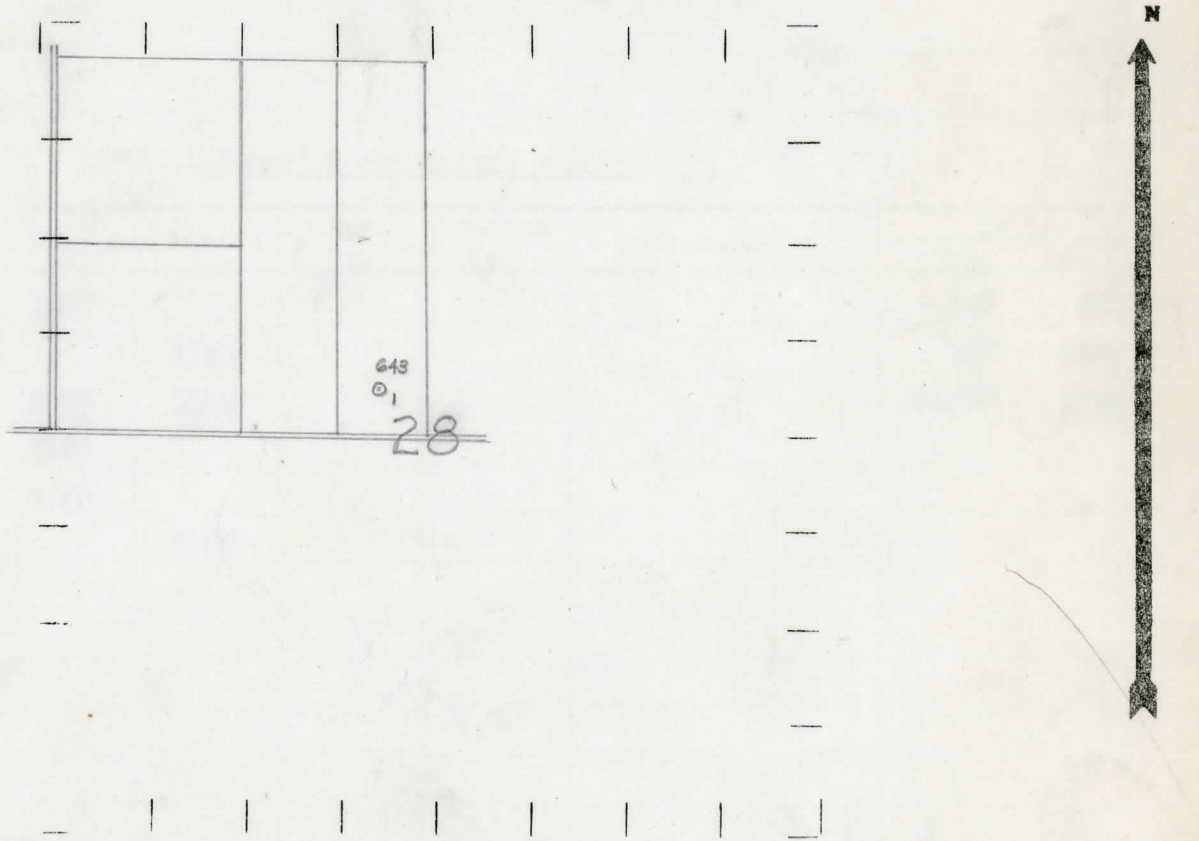
330 330 " " South " 1/4 "

" " West " " "

Map Sherman Township, Isabella County

- LEGEND
- LOCATION
 - ⊕ RIG
 - ⊕ DRILLING
 - ☀ GAS WELL
 - OIL WELL
 - ⬮ SMALL OIL WELL
 - ⊖ DRY HOLE
 - ⊖ DRY SHOWING OIL
 - ⊖ DRY SHOWING GAS
 - ⊖ ABANDONED LOCATION
 - ⊖ ABANDONED GAS WELL
 - ⊖ ABANDONED OIL WELL

NOTE: Below make tracing from map, (when no map is obtainable make sketch) showing farm, center of section, this location with measurements and also wells, dry holes, or other locations in the vicinity of this location.



REMARKS: _____

SIGNED

Superintendent or Foreman.

COMPLETION RECORD OF WELLS DRILLED BY OTHER OPERATORS

Michigan Producing Division

Date January 28, 1938 No. 643
 State Michigan County Isabella Dist. Twp. Sherman Sec. 28 Twp. 15 N Rge. 6 W
 Well No. 1 (Serial No.) (County No.) 643 Farm O. Merrihew Acres _____
 Operator Turner Petroleum Corporation Information secured ~~from~~ ^{by} Scouting Department
 Date well started 12-7-36 Date well completed 1-27-37 Elevation 1005.2

PRODUCTION RECORD

1st 24 hours natural Dry Hole
 2nd 24 hours natural _____
 Date of shot _____ No. of quarts _____ From _____ to _____ From _____ to _____
 Date of acid _____ No. of gallons _____
 1st 24 hours after acid shot
 2nd 24 hours after acid shot

FORMATION AND CASING RECORD

Formation	Top	Bottom	Top Pay	Bottom Pay	Remarks	Casing	
						Size	Set At
Marshall	1440					10"	640
Red Rock		1738				8 1/4"	1097
Antrim	2595	3186				6-5/8"	1750
Traverse	3186						
Monroe	3740						
Total Depth		3763					

Remarks Show gas 1444-salt water 1477-black water 3755-3763-filled up 2000' in 4 hours.

Signed Geo. H. Bell