



Western Michigan University
ScholarWorks at WMU

Legacy Scout Tickets from Pure Oil Company

8-20-2021

**MGRRE_PureOilScoutTickets_Simons,
Minerva_1_21073037680000**

MGRRE
Western Michigan University

Follow this and additional works at: <https://scholarworks.wmich.edu/pure>



Part of the Geology Commons

WMU ScholarWorks Citation

MGRRE, "MGRRE_PureOilScoutTickets_Simons, Minerva_1_21073037680000" (2021). *Legacy Scout Tickets from Pure Oil Company*. 3404.
<https://scholarworks.wmich.edu/pure/3404>

This Document is brought to you for free and open access via ScholarWorks at WMU. It has been accepted for inclusion in Legacy Scout Tickets from Pure Oil Company by an authorized administrator of ScholarWorks at WMU. See the National Digital Catalogue - Science Base Catalogue for more collections submitted by MGRRE.



MGRRE_PureOilScoutTickets_Simons, Minerva_1_21073037680000

API 21073037680000

Permit Number 3768

Lease Name Simons, Minerva

Well Number 1

County Isabella

Township 13N

Range 05W

Section 3

2021 DEQ or Pure co_name Smith Petroleum Company and McClanahan Oil Company

Pure Number 651

Latitude 43.54468

Longitude -84.88792

THE PURE OIL COMPANY

DATE December 31, 1936

LOCATION REPORT

No. 651 *

STATE Michigan COUNTY Isabella DIST. Fremont TWP. Fremont SEC. 33 TOWN 13^N RANGE 5^W

WELL No. 1 (SERIAL No. 651) FARM Minerva Simons ACRES

NAME OF STREAM OR WATERS _____ QUADRANGLE NE-NE-SE
NE NE SE

OPERATOR Smith Petroleum Co. & McClanahan Oil Co. Map Fremont Township, Isabella County
Smith Pet. Co. & McClanahan Oil Co Fremont - Isa. Co

33830 Feet from North Line of Farm

33830 " " East " " "

" " South " " "

" " West " " "

33830 Feet from North Line of Section

33830 " " East " " "

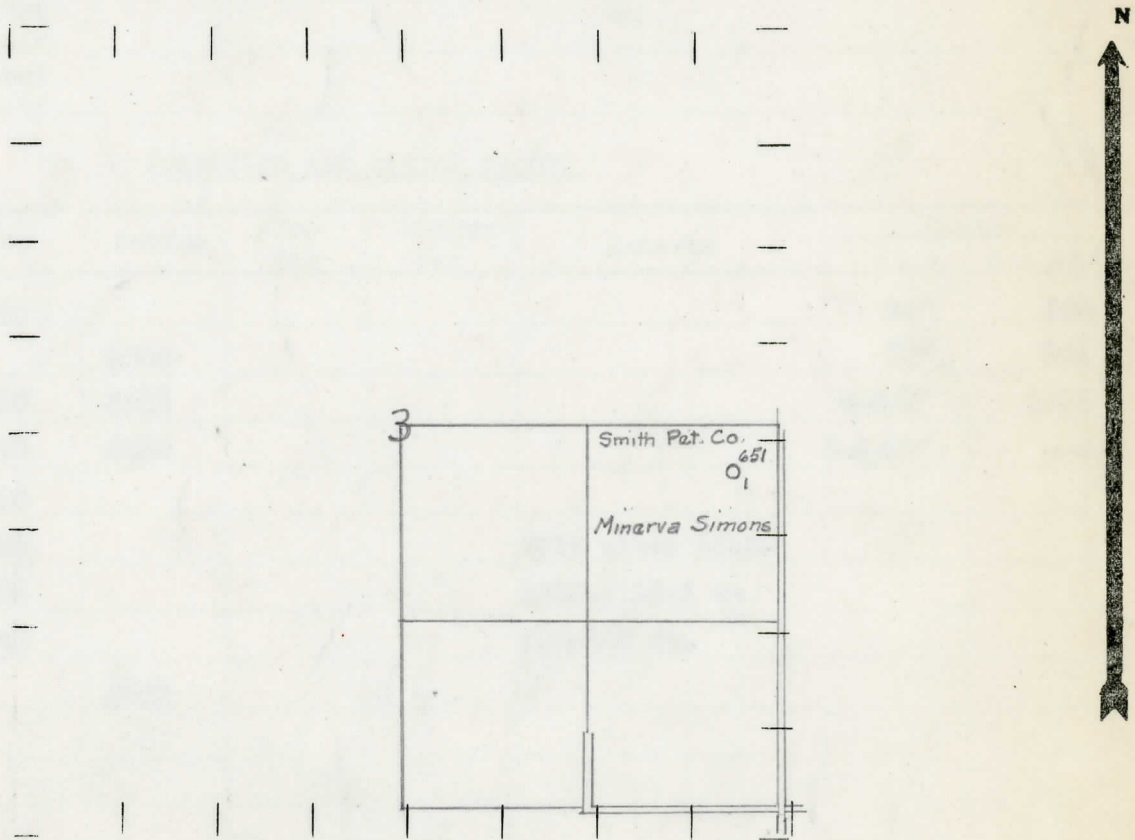
" " South " " "

" " West " " "

LEGEND

- LOCATION
- ⊙ RIG
- ⊕ DRILLING
- ☀ GAS WELL
- OIL WELL
- ⬮ SMALL OIL WELL
- ⊙ DRY HOLE
- ⬮ DRY SHOWING OIL
- ☀ DRY SHOWING GAS
- ⊙ ABANDONED LOCATION
- ☀ ABANDONED GAS WELL
- ⬮ ABANDONED OIL WELL

NOTE: Below make tracing from map, (when no map is obtainable make sketch) showing farm, center of section, this location with measurements and also wells, dry holes, or other locations in the vicinity of this location.



REMARKS:

SIGNED

R. L. Yeager

Superintendent or Foreman.

COMPLETION RECORD OF WELLS DRILLED BY OTHER OPERATORS

Michigan Producing Division

Date February 25, 1937 No. 651
 State Michigan County Isabella Dist. _____
 Twp. Fremont Sec. 3 Twp. 13 N Rge. 5 W
 Well No. 1 (Serial No.) _____
 (County No.) 651 Farm Simons Acres _____
 Operator Smith Petroleum Company & McClanahan Oil Company Information secured ~~from~~ by Scouting Department
 Date well started 1-2-37 Date well completed 2-19-37 Elevation 883.6

PRODUCTION RECORD

1st 24 hours natural Dry Hole
 2nd 24 hours natural _____
 Date of shot _____ No. of quarts _____ From _____ to _____ From _____ to _____
 Date of acid _____ No. of gallons _____
 1st 24 hours after acid shot _____
 2nd 24 hours after acid shot _____

FORMATION AND CASING RECORD

Formation	Top	Bottom	Top Pay	Bottom Pay	Remarks	Casing	
						Size	Set At
Marshall	1349					10"	564
Red Rock		1600				8 1/4"	981
Sunbury	2580	2610				6-5/8"	1615
Berea	2610	2630				5-3/16"	---
Antrim	2630						
Traverse	3095				Salt water 3222-		
Dundee	3654				3225-filled up		
Monroe	3650				400-500 ft.		
Total Depth		3683					

Show
 Remarks/ Salt water 3655-3657-salt water 3680-3683-2500' salt water over-night.

Signed Geo. H. Bell