



Western Michigan University  
ScholarWorks at WMU

---

Legacy Scout Tickets from Pure Oil Company

---

8-20-2021

**MGRRE\_PureOilScoutTickets\_Koch, Ora W\_1\_21073039350000**

MGRRE

*Western Michigan University*

Follow this and additional works at: <https://scholarworks.wmich.edu/pure>



Part of the Geology Commons

---

#### **WMU ScholarWorks Citation**

MGRRE, "MGRRE\_PureOilScoutTickets\_Koch, Ora W\_1\_21073039350000" (2021). *Legacy Scout Tickets from Pure Oil Company*. 3414.

<https://scholarworks.wmich.edu/pure/3414>

This Document is brought to you for free and open access via ScholarWorks at WMU. It has been accepted for inclusion in Legacy Scout Tickets from Pure Oil Company by an authorized administrator of ScholarWorks at WMU. See the National Digital Catalogue - Science Base Catalogue for more collections submitted by MGRRE.



---

**MGRRE\_PureOilScoutTickets\_Koch, Ora W\_1\_21073039350000**

API 21073039350000

Permit Number 3935

Lease Name Koch, Ora W

Well Number 1

County Isabella

Township 13N

Range 04W

Section 1

2021 DEQ or Pure co\_name Gulf Refining Company

Pure Number 672

Latitude 43.55259

Longitude -84.74117

The Pure Oil Company  
THE PURE OIL COMPANY

DATE March 11, 1937

LOCATION REPORT

No. 672

STATE Michigan COUNTY Isabella DIST. Lincoln TWP. Lincoln SEC. 1 TOWN 13 N RANGE 4 W  
WELL No. 11 (SERIAL No. 672) FARM Ora W. Koch ACRES

NAME OF STREAM OR WATERS \_\_\_\_\_ QUADRANGLE NW-NE-NW

OPERATOR Gulf Refining Company Map Lincoln Township, Isabella County  
Gulf. Ref. Co. Lincoln - Isa.

330 330 Feet from North Line of Farm

" " East " " "

" " South " " "

330 330 " " West " " "

330 330 Feet from North Line of Section

" " East " 1/4 "

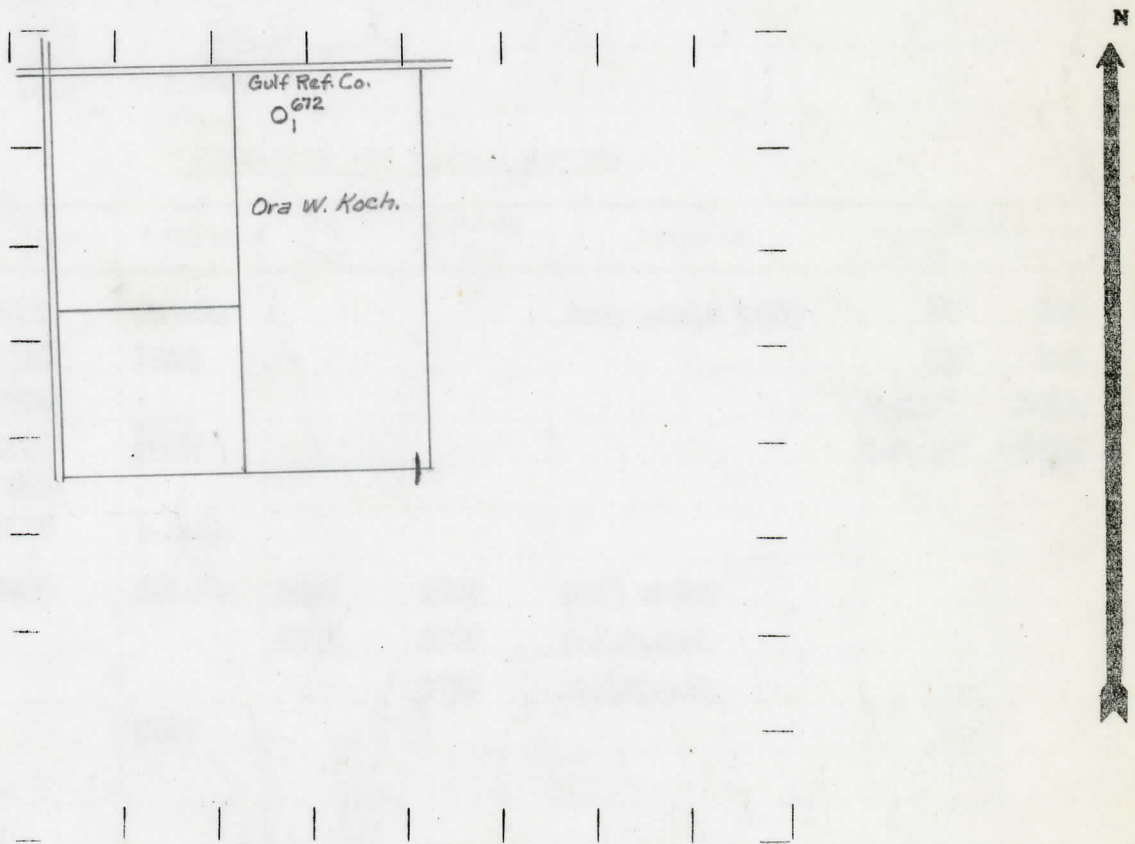
" " South " " "

" " West " " "

LEGEND

- LOCATION
- ⊕ RIG
- ⊕ DRILLING
- ☀ GAS WELL
- OIL WELL
- ◆ SMALL OIL WELL
- ⊖ DRY HOLE
- ◆ DRY SHOWING OIL
- ☀ DRY SHOWING GAS
- ⊖ ABANDONED LOCATION
- ☀ ABANDONED GAS WELL
- ◆ ABANDONED OIL WELL

NOTE: Below make tracing from map, (when no map is obtainable make sketch) showing farm, center of section, this location with measurements and also wells, dry holes, or other locations in the vicinity of this location.



REMARKS:

SIGNED

R. L. Young  
Superintendent or Foreman.

COMPLETION RECORD OF WELLS DRILLED BY OTHER OPERATORS

Michigan Producing Division

Date May 23, 1937 No. 672  
 State Michigan County Isabella Dist. \_\_\_\_\_  
 (Serial No.) Twp. Lincoln Sec. 1 Twp. 13 N Rge. 4 W  
 Well No. 1 (County No.) 672 Farm Ora W. Koch Acres \_\_\_\_\_  
 Operator Gulf Refining Company Information secured ~~from~~ Scouting Department by \_\_\_\_\_  
 Date well started 3-17-37 Date well completed 5-20-37 Elevation 796.2

PRODUCTION RECORD

1st 24 hours natural Dry Hole  
 2nd 24 hours natural \_\_\_\_\_  
 Date of shot \_\_\_\_\_ No. of quarts \_\_\_\_\_ From \_\_\_\_\_ to \_\_\_\_\_ From \_\_\_\_\_ to \_\_\_\_\_  
 Date of acid \_\_\_\_\_ No. of gallons \_\_\_\_\_  
 shot \_\_\_\_\_  
 1st 24 hours after acid \_\_\_\_\_  
 shot \_\_\_\_\_  
 2nd 24 hours after acid \_\_\_\_\_

FORMATION AND CASING RECORD

Formation	Top	Bottom	Top Pay	Bottom Pay	Remarks	Casing	
						Size	Set At
Marshall	1453	S.L.M.			Show water 1410	10"	446
Red Rock	1525	1606				8 1/2"	996
Sunbury	2585					6-5/8"	1611
Berea	2620	2625				5-3/16"	3686
Antrim	2678						
Traverse	3159	S.L.M.					
Dundee	3685	S.L.M.	3697	3702	Salt water		
			3730	3732	H.F.B.S.W.		
				3737	H.F.B.S.W.		
Total Depth		3737					

Remarks \_\_\_\_\_  
 \_\_\_\_\_  
 \_\_\_\_\_

Signed Dean C. Shackelford