



Western Michigan University
ScholarWorks at WMU

Legacy Scout Tickets from Pure Oil Company

8-20-2021

MGRRE_PureOilScoutTickets_Herman, P_1_21073043890000

MGRRE

Western Michigan University

Follow this and additional works at: <https://scholarworks.wmich.edu/pure>



Part of the Geology Commons

WMU ScholarWorks Citation

MGRRE, "MGRRE_PureOilScoutTickets_Herman, P_1_21073043890000" (2021). *Legacy Scout Tickets from Pure Oil Company*. 3430.

<https://scholarworks.wmich.edu/pure/3430>

This Document is brought to you for free and open access via ScholarWorks at WMU. It has been accepted for inclusion in Legacy Scout Tickets from Pure Oil Company by an authorized administrator of ScholarWorks at WMU. See the National Digital Catalogue - Science Base Catalogue for more collections submitted by MGRRE.



MGRRE_PureOilScoutTickets_Herman, P._1_21073043890000

API 21073043890000

Permit Number 4389

Lease Name Herman, P.

Well Number 1

County Isabella

Township 16N

Range 03W

Section 4

2021 DEQ or Pure co_name Peirce, J. A.

Pure Number 711

Latitude 43.81146

Longitude -84.68445

The Pure Oil Company
THE PURE OIL COMPANY

DATE August 5, 1937

LOCATION REPORT

No. 711

STATE Michigan COUNTY Isabella DIST. Wise TWP. Wise SEC. 4 TOWN 16 N RANGE 3 W

WELL No. 1 (SERIAL No. 711) FARM P. Herman ACRES

NAME OF STREAM OR WATERS _____ QUADRANGLE C 1/2 NW

OPERATOR James A. Pierce Map Wise Township, Isabella County

Jas. A. Pearce

Wise - Isa.

Feet from North Line of Farm

660 660 " " East " " "

1320 1320 " " South " " "

" " West " " "

Feet from North Line of Section

1320 1320 " " East " " "

" " South " " "

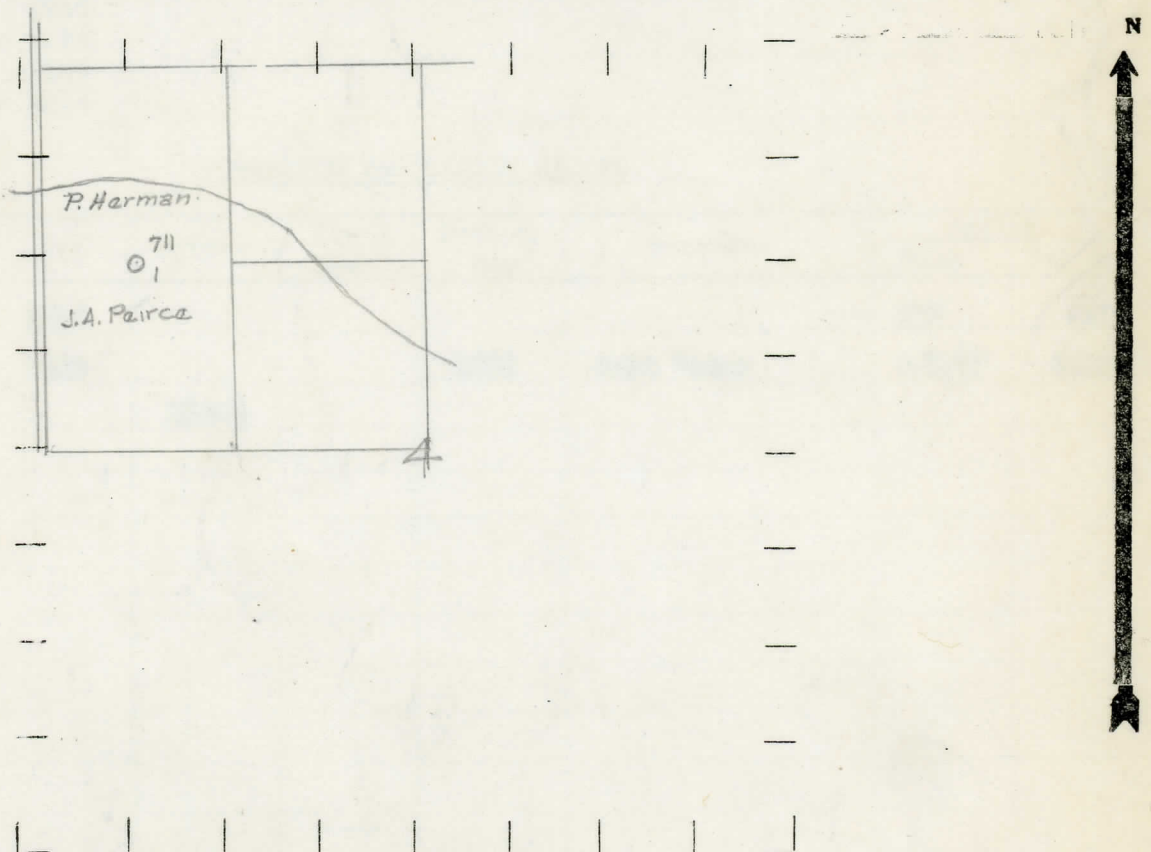
660 660 " " West " " "

Low

LEGEND

- LOCATION
- ⊙ RIG
- ⊕ DRILLING
- ☀ GAS WELL
- OIL WELL
- ⦿ SMALL OIL WELL
- ⊖ DRY HOLE
- ⦿ DRY SHOWING OIL
- ⊖ DRY SHOWING GAS
- ⊖ ABANDONED LOCATION
- ☀ ABANDONED GAS WELL
- ⦿ ABANDONED OIL WELL

NOTE: Below make tracing from map, (when no map is obtainable make sketch) showing farm, center of section, this location with measurements and also wells, dry holes, or other locations in the vicinity of this location.



REMARKS:

SIGNED

Superintendent or Foreman.

