



Western Michigan University
ScholarWorks at WMU

Legacy Scout Tickets from Pure Oil Company

8-20-2021

**MGRRE_PureOilScoutTickets_Kennedy, J. M.
Estate_1_21073045400000**

MGRRE
Western Michigan University

Follow this and additional works at: <https://scholarworks.wmich.edu/pure>



Part of the Geology Commons

WMU ScholarWorks Citation

MGRRE, "MGRRE_PureOilScoutTickets_Kennedy, J. M. Estate_1_21073045400000" (2021). *Legacy Scout Tickets from Pure Oil Company*. 3434.
<https://scholarworks.wmich.edu/pure/3434>

This Document is brought to you for free and open access via ScholarWorks at WMU. It has been accepted for inclusion in Legacy Scout Tickets from Pure Oil Company by an authorized administrator of ScholarWorks at WMU. See the National Digital Catalogue - Science Base Catalogue for more collections submitted by MGRRE.



MGRRE_PureOilScoutTickets_Kennedy, J. M. Estate_1_21073045400000

API 21073045400000

Permit Number 4540

Lease Name Kennedy, J. M. Estate

Well Number 1

County Isabella

Township 14N

Range 04W

Section 25

2021 DEQ or Pure co_name Zabel, J. Golden

Pure Number 720

Latitude 43.58175

Longitude -84.7365

The Pure Oil Company
THE PURE OIL COMPANY

COMPLETION RECORD OF WELLS DRILLED BY OTHER OPERATORS

DATE October 7, 1937

LOCATION REPORT

No. 720

STATE Michigan

COUNTY Isabella

DIST. Union

SEC. 25

TOWN 14 N

RANGE 4 W

WELL No. 1 (SERIAL No. 720) FARM

J. M. Kennedy Estate

ACRES

NAME OF STREAM OR WATERS

QUADRANGLE NW NW NE

OPERATOR J. Golden Zabel

Map Union Township, Isabella County

300 300 Feet from North Line of Farm

" " East " " "

" " South " " "

25 250 " " West " " "

300 300 Feet from North Line of Section

" " East " " "

" " South " " "

250 250 " " West " 1/4 "

LEGEND

○ LOCATION

⊙ RIG

⊕ DRILLING

☀ GAS WELL

● OIL WELL

⦿ SMALL OIL WELL

⊖ DRY HOLE

⦿ DRY SHOWING OIL

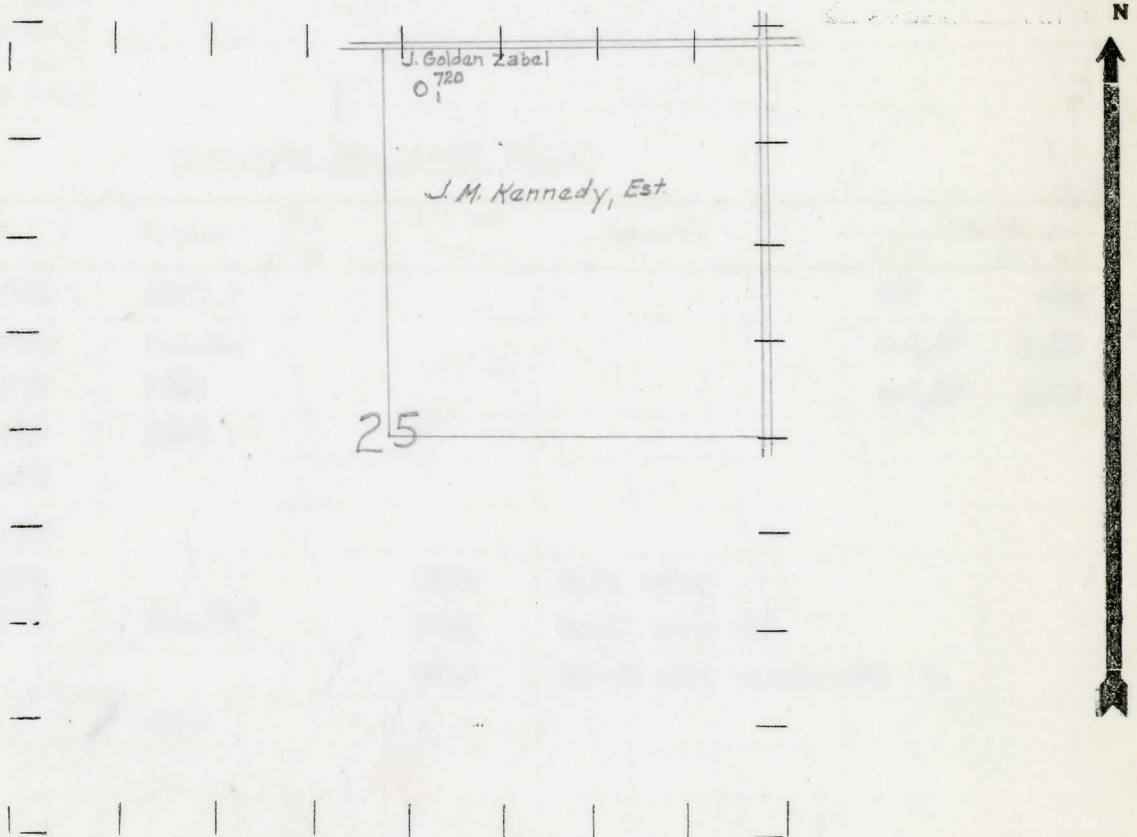
⊖ DRY SHOWING GAS

⊖ ABANDONED LOCATION

☀ ABANDONED GAS WELL

⦿ ABANDONED OIL WELL

NOTE: Below make tracing from map, (when no map is obtainable make sketch) showing farm, center of section, this location with measurements and also wells, dry holes, or other locations in the vicinity of this location.



REMARKS:

SIGNED

P. L. Yager
Superintendent or Foreman.

Michigan Producing Division

Date March 17, 1938 No. 720
 State Mich. County Isabella Dist. Union
 Twp. Union Sec. 25 Twp. 14 N Rge. 4 W
 Well No. 1 (Serial No.) 720 Farm J. M. Kennedy Estate Acres _____
 Operator J. Golden Zabel Information secured ^{By} ~~from~~ Scouting Department
 Date well started 10-13-37 Date well completed 5-13-38 Elevation 780.9

PRODUCTION RECORD

1st 24 hours natural Dry Hole
 2nd 24 hours natural _____
 Date of shot _____ No. of quarts _____ From _____ to _____ From _____ to _____
 Date of acid _____ No. of gallons _____
 shot _____
 1st 24 hours after acid _____
 shot _____
 2nd 24 hours after acid _____

FORMATION AND CASING RECORD

Formation	Top	Bottom	Top Pay	Bottom Pay	Remarks	Casing	
						Size	Set at
Stray	1384 ?	1395 ?				10"	434
Marshall	1405	S.L.M.				8-1/4"	1002
Red Rock	1572	1629				6-5/8"	1662
Sunbury	2627	2650					
Berea	2650						
Antrim	2655						
Traverse	3145			3275	Salt water		
Dundee	3774	S.L.M.		3791	Small show oil		
				3813	Black salt water-1000 ft.		
Total Depth		3813					

Remarks _____

Signed D. C. Shackelford