



Western Michigan University
ScholarWorks at WMU

Legacy Scout Tickets from Pure Oil Company

8-20-2021

MGRRE_PureOilScoutTickets_Moore, Tom_1_21073050490000

MGRRE

Western Michigan University

Follow this and additional works at: <https://scholarworks.wmich.edu/pure>



Part of the Geology Commons

WMU ScholarWorks Citation

MGRRE, "MGRRE_PureOilScoutTickets_Moore, Tom_1_21073050490000" (2021). *Legacy Scout Tickets from Pure Oil Company*. 3445.

<https://scholarworks.wmich.edu/pure/3445>

This Document is brought to you for free and open access via ScholarWorks at WMU. It has been accepted for inclusion in Legacy Scout Tickets from Pure Oil Company by an authorized administrator of ScholarWorks at WMU. See the National Digital Catalogue - Science Base Catalogue for more collections submitted by MGRRE.



MGRRE_PureOilScoutTickets_Moore, Tom_1_21073050490000

API 21073050490000

Permit Number 5049

Lease Name Moore, Tom

Well Number 1

County Isabella

Township 13N

Range 05W

Section 8

2021 DEQ or Pure co_name Bell and Marks, Incorporated

Pure Number 748

Latitude 43.52968

Longitude -84.94268

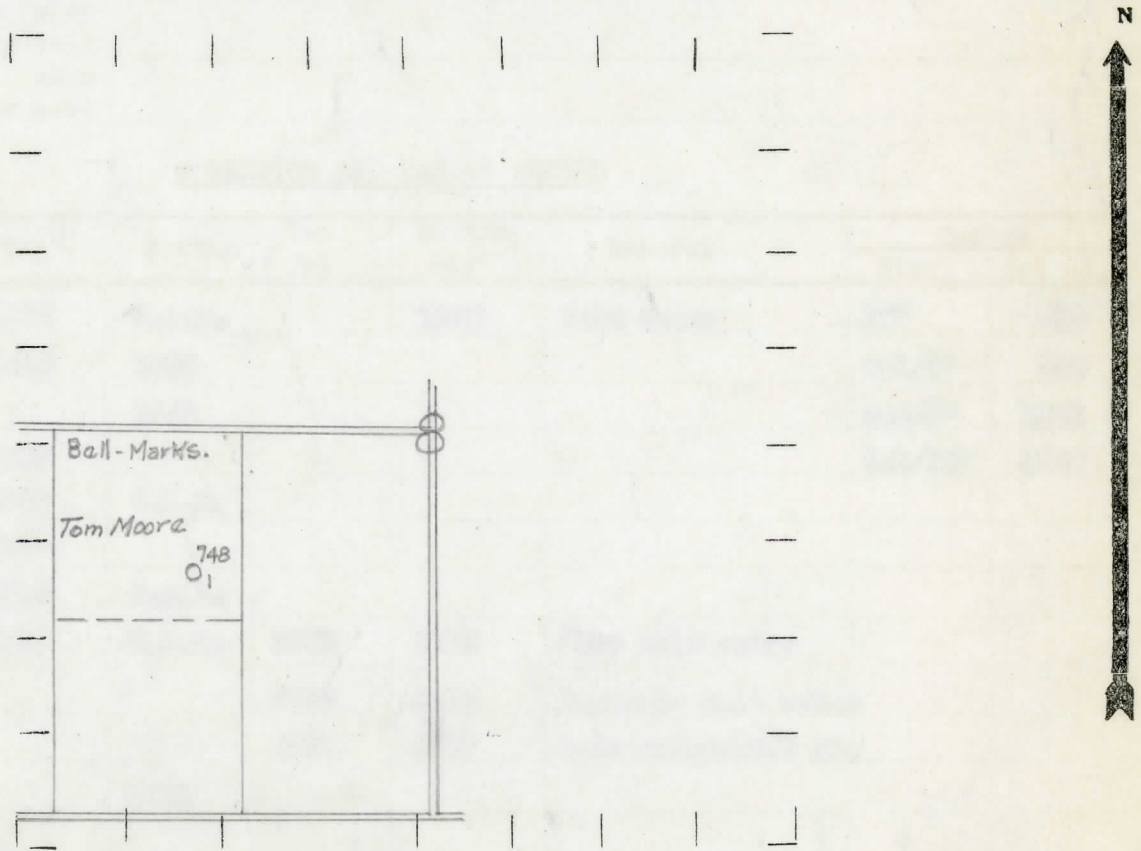
The Pure Oil Company
COMPLETION RECORD THE PURE OIL COMPANY BY OTHER OPERATORS

DATE June 2, 1938 LOCATION REPORT No. 748
STATE Michigan COUNTY Isabella DISTRICT Freemont TWP. Freemont SEC. 8 TOWN 13 N RANGE 5 W
WELL No. 11 (SERIAL No. 748) FARM Tom Moore ACRES
NAME OF STREAM OR WATERS _____ QUADRANGLE SE-NW-SW
OPERATOR Bell-Marks, Inc. Map Freemont Township, Isabella County
Bell-Marks - Inc. Freemont - Isa.

Feet from North Line of Farm
330 330 " " East " " "
330 330 " " South " " "
" " West " " "
990 990 Feet from North Line of Section
" " East " " "
" " South " " "
990 990 " " West " " "

- LEGEND**
- LOCATION
 - ① RIG
 - ⊕ DRILLING
 - ☀ GAS WELL
 - OIL WELL
 - ⦿ SMALL OIL WELL
 - ⊖ DRY HOLE
 - ⊕ DRY SHOWING OIL
 - ☀ DRY SHOWING GAS
 - ⊖ ABANDONED LOCATION
 - ☀ ABANDONED GAS WELL
 - ⦿ ABANDONED OIL WELL

NOTE: Below make tracing from map, (when no map is obtainable make sketch) showing farm, center of section, this location with measurements and also wells, dry holes, or other locations in the vicinity of this location.



REMARKS:

SIGNED R. L. Yager
Superintendent or Foreman.

COMPLETION RECORD OF WELLS DRILLED BY OTHER OPERATORS

Michigan Producing Division

Date August 25, 1938 No. 748
 State Michigan County Isabella District Fromont Sec. 8 Twp. 13 N Rge. 5 W
 Well No. 1 (Serial No.) 748 Farm Tom Moore Acres _____
 Operator Bell-Marks, Inc. Information secured ~~from~~ Scouting Department By _____
 Date well started 6-30-38 Date well completed 8-23-38 Elevation 931.4

PRODUCTION RECORD

1st 24 hours natural Dry Hole
 2nd 24 hours natural _____
 Date of shot _____ No. of quarts _____ From _____ to _____ From _____ to _____
 Date of acid _____ No. of gallons _____
 1st 24 hours after acid shot _____
 2nd 24 hours after acid shot _____

FORMATION AND CASING RECORD

Formation	Top	Bottom	Top Pay	Bottom Pay	Remarks	Casing	
						Size	Set at
Marshall	1375	S.L.M.		1385	Salt water	10"	619
Red Rock	1425	1495				8-1/4"	890
Red Rock		1648				6-5/8"	1665
Sunbury	2615					5-3/16"	3688
Berea	2628	S.L.M.					
Antrim	2660						
Traverse	3110	C.T.M.					
Dundee	3697	S.L.M.	3706	3712	Show salt water		
			3712	3724	Increase salt water		
			3724	3727	Salt water-1000 ft.		
Total Depth		3755					

Remarks 2563' C.T.M. equals 2554' S.L.M. - 3691' C.T.M. equals 3700' S.L.M.
3638' C.T.M. equals 3653' S.L.M.

Signed D. C. Shackelford