



Western Michigan University  
ScholarWorks at WMU

---

Legacy Scout Tickets from Pure Oil Company

---

8-20-2021

**MGRRE\_PureOilScoutTickets\_Bellinger,  
Elmer\_1\_21073051320000**

MGRRE  
*Western Michigan University*

Follow this and additional works at: <https://scholarworks.wmich.edu/pure>



Part of the Geology Commons

---

#### **WMU ScholarWorks Citation**

MGRRE, "MGRRE\_PureOilScoutTickets\_Bellinger, Elmer\_1\_21073051320000" (2021). *Legacy Scout Tickets from Pure Oil Company*. 3447.  
<https://scholarworks.wmich.edu/pure/3447>

This Document is brought to you for free and open access via ScholarWorks at WMU. It has been accepted for inclusion in Legacy Scout Tickets from Pure Oil Company by an authorized administrator of ScholarWorks at WMU. See the National Digital Catalogue - Science Base Catalogue for more collections submitted by MGRRE.



---

**MGRRE\_PureOilScoutTickets\_Bellinger, Elmer\_1\_21073051320000**

API 21073051320000

Permit Number 5132

Lease Name Bellinger, Elmer

Well Number 1

County Isabella

Township 14N

Range 05W

Section 32

2021 DEQ or Pure co\_name Teater, C, W.

Pure Number 751

Latitude 43.55393

Longitude -84.9307

THE PURE OIL COMPANY  
COMPLETION RECORD OF WELLS DRILLED BY OTHER OPERATORS  
LOCATION REPORT

DATE July 7, 1938

No. 751

STATE Michigan COUNTY Isabella DIST TWP Deerfield SEC 32 TOWN 14 N RANGE 5 W

WELL No. 1 (SERIAL No. 751) FARM Elmer Bellinger ACRES

NAME OF STREAM OR WATERS QUADRANGLE SW SE SE

OPERATOR C. W. Teater Map Deerfield Township, Isabella County

Feet from North Line of Farm

330 330 " " East " " "

330 330 " " South " " "

330 330 " " West " " "

Feet from North Line of Section

990 990 " " East " " "

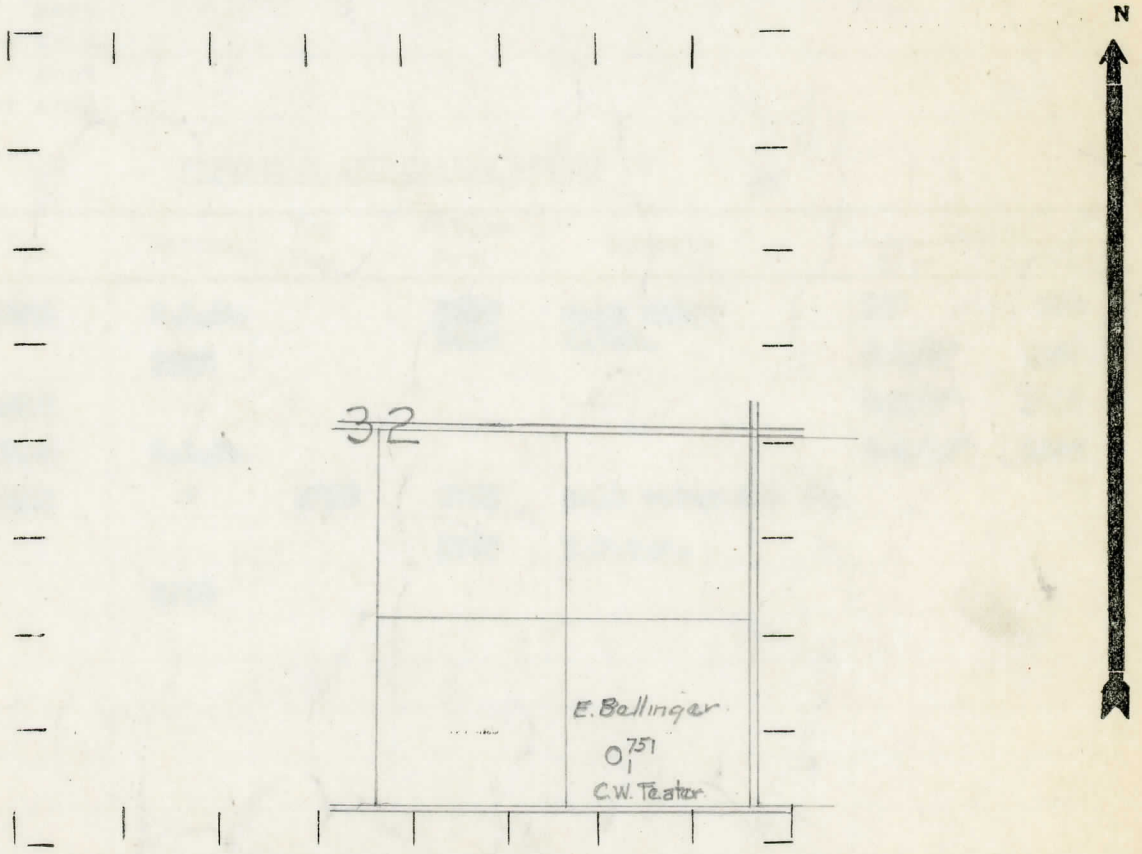
330 330 " " South " " "

" " West " " "

LEGEND

- LOCATION
- ⊕ RIG
- ⊕ DRILLING
- ☀ GAS WELL
- OIL WELL
- SMALL OIL WELL
- ⊖ DRY HOLE
- ⊖ DRY SHOWING OIL
- ⊖ DRY SHOWING GAS
- ⊖ ABANDONED LOCATION
- ⊖ ABANDONED GAS WELL
- ⊖ ABANDONED OIL WELL

NOTE: Below make tracing from map, (when no map is obtainable make sketch) showing farm, center of section, this location with measurements and also wells, dry holes, or other locations in the vicinity of this location.



REMARKS:

SIGNED

*R. L. Y.*  
Superintendent or Foreman.



Michigan Producing Division

Date September 15, 1938 No. 751  
 State Mich. County Isabella Dist. Deerfield Twp. Deerfield Sec. 32 Twp. 14 N Rge. 5 W  
 Well No. 1- (Serial No.) 751 Farm Elmer Bollinger Acres \_\_\_\_\_  
 Operator C. W. Teator Information secured From Scouting Department  
 Date well started 7-11-38 Date well completed 9-10-38 Elevation 933.4

PRODUCTION RECORD

1st 24 hours natural Dry Hole  
 2nd 24 hours natural \_\_\_\_\_  
 Date of shot \_\_\_\_\_ No. of quarts \_\_\_\_\_ From \_\_\_\_\_ to \_\_\_\_\_ From \_\_\_\_\_ to \_\_\_\_\_  
 Date of acid \_\_\_\_\_ No. of gallons \_\_\_\_\_  
 1st 24 hours after acid shot \_\_\_\_\_  
 2nd 24 hours after acid shot \_\_\_\_\_

FORMATION AND CASING RECORD

Formation	Top	Bottom	Top Pay	Bottom Pay	Remarks	Casing	
						Size	Set at
Marshall	1405	S.L.M.		1420	Salt water	10"	679
Red Rock		1685		1460	H.F.W.	8-1/4"	1067
Antrim	2617					6-5/8"	1745
Traverse	3125	S.L.M.				5-3/16"	3695
Dundee	3682	"	3729	3732	Salt water-200 ft.		
				3740	H.F.S.W.		
Total Depth		3740					

Remarks 1377' C.T.M. equals 1377' S.L.M. - 3104' C.T.M. equals 3104' S.L.M. - 3702' C.T.M. equals 3696' S.L.M.

Signed D. C. Shackelford