



Western Michigan University  
ScholarWorks at WMU

---

Legacy Scout Tickets from Pure Oil Company

---

8-20-2021

**MGRRE\_PureOilScoutTickets\_Weidman\_1\_21073048840000**

MGRRE

*Western Michigan University*

Follow this and additional works at: <https://scholarworks.wmich.edu/pure>



Part of the Geology Commons

---

#### **WMU ScholarWorks Citation**

MGRRE, "MGRRE\_PureOilScoutTickets\_Weidman\_1\_21073048840000" (2021). *Legacy Scout Tickets from Pure Oil Company*. 3448.

<https://scholarworks.wmich.edu/pure/3448>

This Document is brought to you for free and open access via ScholarWorks at WMU. It has been accepted for inclusion in Legacy Scout Tickets from Pure Oil Company by an authorized administrator of ScholarWorks at WMU. See the National Digital Catalogue - Science Base Catalogue for more collections submitted by MGRRE.



---

**MGRRE\_PureOilScoutTickets\_Weidman\_1\_21073048840000**

API 21073048840000

Permit Number 4884

Lease Name Weidman

Well Number 1

County Isabella

Township 13N

Range 05W

Section 26

2021 DEQ or Pure co\_name Rowmor Corporation

Pure Number 752

Latitude 43.4872

Longitude -84.87849

The Pure Oil Company  
 THE PURE OIL COMPANY

DATE July 7, 1938

LOCATION REPORT

No. 752 \*

STATE Michigan COUNTY Isabella DIST. Fremont TWP. Fremont SEC. 26 TOWN 13 N RANGE 5 W

WELL No. 1 (SERIAL No. 752) FARM Weidman ACRES

NAME OF STREAM OR WATERS QUADRANGLE CNE NE SW

OPERATOR Rowmar Corporation Map Fremont Township, Isabella County

33 330 Feet from North Line of Farm

66 660 " " East " " "

" " South " " "

" " West " " "

330 330 Feet from North Line of Section 1/4

660 660 " " East " 1/4 "

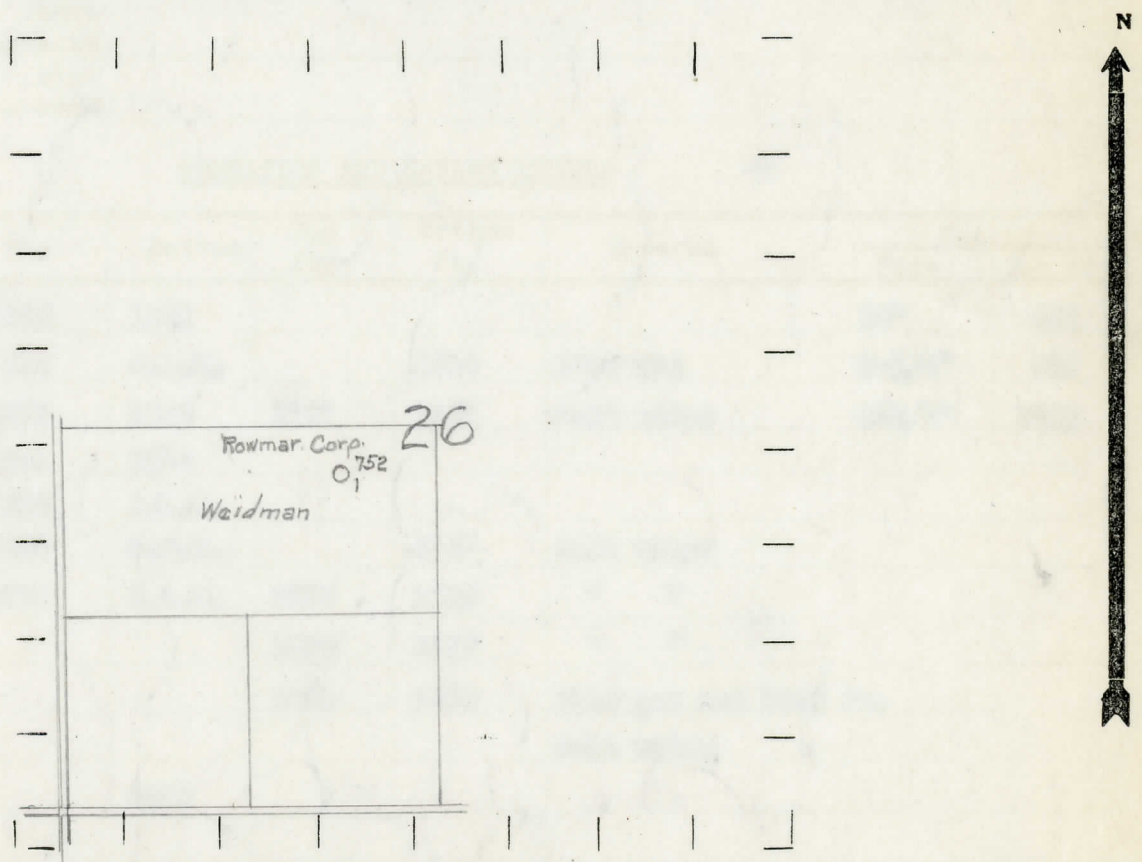
" " South " " "

" " West " " "

LEGEND

- LOCATION
- ⊕ RIG
- ⊕ DRILLING
- ☀ GAS WELL
- OIL WELL
- SMALL OIL WELL
- ⊙ DRY HOLE
- DRY SHOWING OIL
- ☀ DRY SHOWING GAS
- ⊙ ABANDONED LOCATION
- ☀ ABANDONED GAS WELL
- ABANDONED OIL WELL

NOTE: Below make tracing from map, (when no map is obtainable make sketch) showing farm, center of section, this location with measurements and also wells, dry holes, or other locations in the vicinity of this location.



REMARKS:

SIGNED

*R. A. Y.*

Superintendent or Foreman.



COMPLETION RECORD OF WELLS DRILLED BY OTHER OPERATORS

Michigan Producing Division

Date August 25, 1938 No. 752  
 State Michigan County Isabella ~~Sixty~~ Twp. Fremont Sec. 26 Twp. 15 N Rge. 5 W  
 Well No. 1 (Serial No.) ~~(County No.)~~ 752 Farm Weidman Acres \_\_\_\_\_  
 Operator Rowser Corporation Information secured ~~from~~ Scouting Department By \_\_\_\_\_  
 Date well started 7-12-38 Date well completed 8-23-38 Elevation 844.7

PRODUCTION RECORD

1st 24 hours natural Dry Hole  
 2nd 24 hours natural \_\_\_\_\_  
 Date of shot \_\_\_\_\_ No. of quarts \_\_\_\_\_ From \_\_\_\_\_ to \_\_\_\_\_ From \_\_\_\_\_ to \_\_\_\_\_  
 Date of acid \_\_\_\_\_ No. of gallons \_\_\_\_\_  
 shot \_\_\_\_\_  
 1st 24 hours after acid \_\_\_\_\_  
 shot \_\_\_\_\_  
 2nd 24 hours after acid \_\_\_\_\_

FORMATION AND CASING RECORD

Formation	Top	Bottom	Top Pay	Bottom Pay	Remarks	Casing	
						Size	Set at
Stray	1280	1282				10"	491
Marshall	1290	S.L.M.		1294	Show gas	6-1/4"	933
Red Rock	1517	1544	1507	1517	Salt water	6-5/8"	1743
Berea	2541	2548					
Antrim	2548	S.L.M.					
Traverse	3020	C.T.M.		3147	Salt water		
Monroe	3573	S.L.M.	3575	3580	" "		
			3580	3586	" "		
			3586	3596	Show gas and 3000 ft. salt water		
Total Depth		3596					

Remarks 1400 C.T.M. equals 1400' S.L.M. - 2597' C.T.M. equals 2593' S.L.M. - 3572' C.T.M. equals 3575' S.L.M.

Signed D. C. Shackelford