



Western Michigan University
ScholarWorks at WMU

Legacy Scout Tickets from Pure Oil Company

8-20-2021

MGRRE_PureOilScoutTickets_Beale-Seibet_1_21073051770000

MGRRE

Western Michigan University

Follow this and additional works at: <https://scholarworks.wmich.edu/pure>



Part of the Geology Commons

WMU ScholarWorks Citation

MGRRE, "MGRRE_PureOilScoutTickets_Beale-Seibet_1_21073051770000" (2021). *Legacy Scout Tickets from Pure Oil Company*. 3449.

<https://scholarworks.wmich.edu/pure/3449>

This Document is brought to you for free and open access via ScholarWorks at WMU. It has been accepted for inclusion in Legacy Scout Tickets from Pure Oil Company by an authorized administrator of ScholarWorks at WMU. See the National Digital Catalogue - Science Base Catalogue for more collections submitted by MGRRE.



MGRRE_PureOilScoutTickets_Beale-Seibet_1_21073051770000

API 21073051770000

Permit Number 5177

Lease Name Beale-Seibet

Well Number 1

County Isabella

Township 16N

Range 03W

Section 6

2021 DEQ or Pure co_name Peirce, J. A.

Pure Number 753

Latitude 43.81134

Longitude -84.72345

THE PURE OIL COMPANY
COMPLETION RECORD OF WELLS DRILLED BY OTHER OPERATORS

DATE July 28, 1938 LOCATION REPORT No. 753
STATE Michigan COUNTY Isabella DISTRICT Wise TWP. Wise SEC. 6 TOWN 16 N RANGE 3 W
WELL No. 1 (SERIAL No. 753) FARM E. C. Beale - J. Seibt ACRES
NAME OF STREAM OR WATERS _____ QUADRANGLE C-11W 4

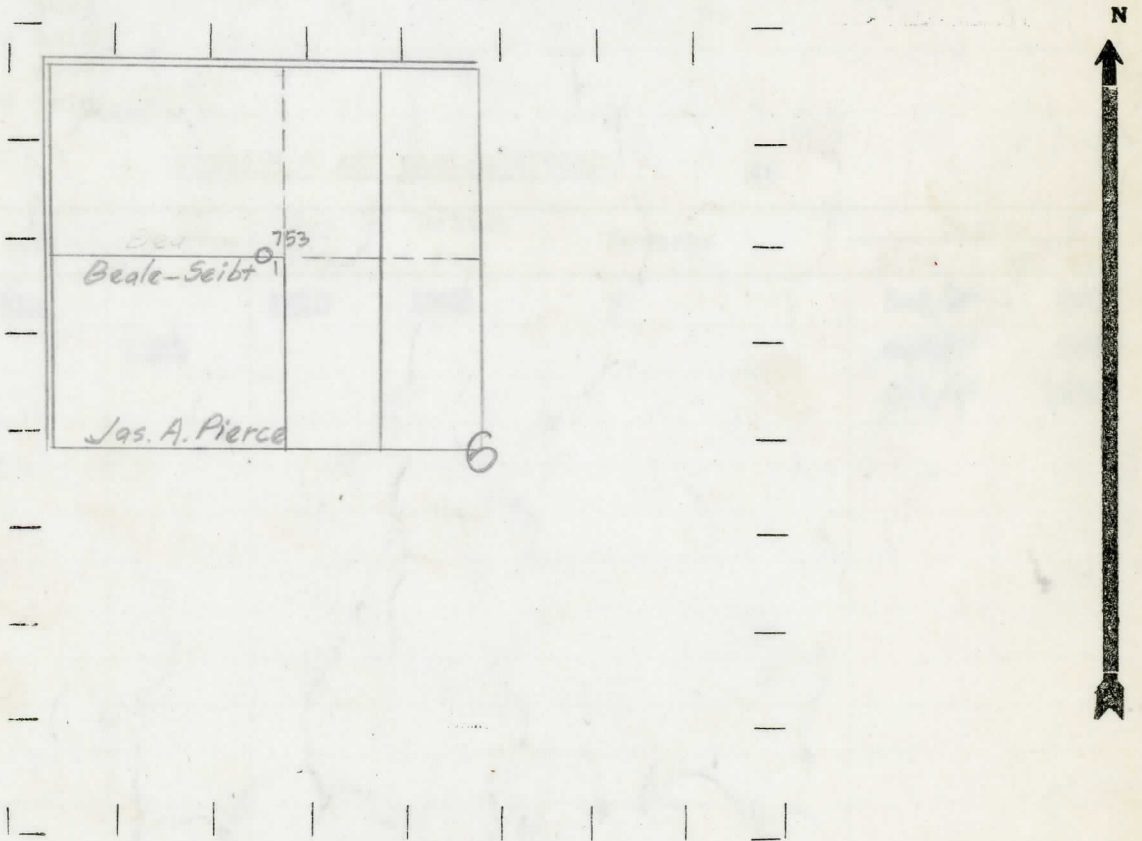
OPERATOR James A. Pierce Map Wise Township, Isabella County

1320 Jas. A. Pierce
Feet from North Line of Farm
" " East " " "
" " South " " "
1320 " " West " " "
1320 Feet from North Line of Section
" " East " " "
" " South " " "
1320 " " West " " "

W 110
Sy 7-22-38

- LEGEND**
- LOCATION
 - ⊕ RIG
 - ⊕ DRILLING
 - ☀ GAS WELL
 - OIL WELL
 - ⊕ SMALL OIL WELL
 - ⊙ DRY HOLE
 - DRY SHOWING OIL
 - ⊙ DRY SHOWING GAS
 - ⊙ ABANDONED LOCATION
 - ☀ ABANDONED GAS WELL
 - ABANDONED OIL WELL

NOTE: Below make tracing from map, (when no map is obtainable make sketch) showing farm, center of section, this location with measurements and also wells, dry holes, or other locations in the vicinity of this location.



REMARKS:

SIGNED
R. L. Yeager
Superintendent or Foreman.
by D. Matton

