



Legacy Scout Tickets from Pure Oil Company

8-20-2021

MGRRE_PureOilScoutTickets_Smith, John H et al_1_21073060300000

MGRRE

Western Michigan University

Follow this and additional works at: <https://scholarworks.wmich.edu/pure>



Part of the Geology Commons

WMU ScholarWorks Citation

MGRRE, "MGRRE_PureOilScoutTickets_Smith, John H et al_1_21073060300000" (2021). *Legacy Scout Tickets from Pure Oil Company*. 3466.

<https://scholarworks.wmich.edu/pure/3466>

This Document is brought to you for free and open access via ScholarWorks at WMU. It has been accepted for inclusion in Legacy Scout Tickets from Pure Oil Company by an authorized administrator of ScholarWorks at WMU. See the National Digital Catalogue - Science Base Catalogue for more collections submitted by MGRRE.



MGRRE_PureOilScoutTickets_Smith, John H et al_1_21073060300000

API 21073060300000

Permit Number 6030

Lease Name Smith, John H et al

Well Number 1

County Isabella

Township 16N

Range 03W

Section 21

2021 DEQ or Pure co_name Oxy USA, Incorporated

Pure Number 775

Latitude 43.75984

Longitude -84.68096

THE PURE OIL COMPANY
LOCATION REPORT

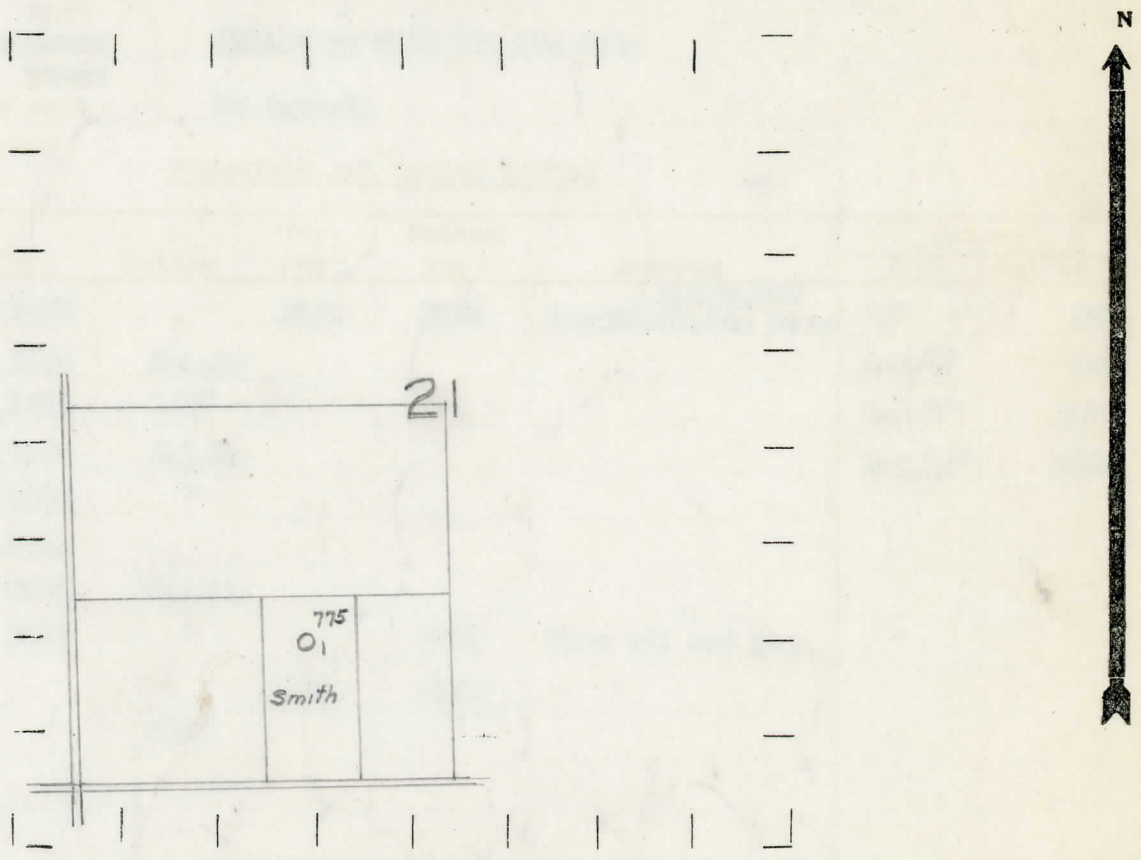
DATE April 13, 1939 No. 775
 STATE Michigan COUNTY Isabella DIST. Wise TWP. Wise SEC. 21 TOWN 16 N RANGE 3 W
 WELL No. 1 (SERIAL No. 775) FARM John H. Smith, et al ACRES _____
 NAME OF STREAM OR WATERS _____ QUADRANGLE NW SE SW
 OPERATOR Cities Service Oil Company Map Wise Township, Isabella County
Cities Service Oil Co. Wise - Isa.

Feet from North Line of Farm
33330 " " East " " "
990990 " " South " " "
 " " West " " "
 Feet from North Line of Section
790990 " " East 1/4 "
990990 " " South " " "
 " " West " " "

Low

- LEGEND**
- LOCATION
 - ⊕ RIG
 - ⊕ DRILLING
 - ☀ GAS WELL
 - OIL WELL
 - SMALL OIL WELL
 - ⊖ DRY HOLE
 - ⊖ DRY SHOWING OIL
 - ⊖ DRY SHOWING GAS
 - ⊖ ABANDONED LOCATION
 - ⊖ ABANDONED GAS WELL
 - ⊖ ABANDONED OIL WELL

NOTE: Below make tracing from map, (when no map is obtainable make sketch) showing farm, center of section, this location with measurements and also wells, dry holes, or other locations in the vicinity of this location.



REMARKS: _____

SIGNED R. A. G.
 Superintendent or Foreman.

Michigan Producing Division

Date July 7, 1939

No. 775

State Mich. County Isabella Distr. Wise Twp. Wise Sec. 21 Twp. 16 N Rge. 3 W

Well No. 1 (Serial No.) 775 Farm John H. Smith, et al Acres

Operator Cities Service Oil Company Information secured from Scouting Department

Date well started 4-30-39 Dated well completed 6-19-39 Elevation 762.4

PRODUCTION RECORD

1st 24 hours natural Filled up 500 ft.

2nd 24 hours natural

Date of shot 6-20-39 No. of quarts 20 From 3704' to 3709' From to

Date of acid 6-27-39 No. of gallons 1000

1st 24 hours after shot Filled up with 700 ft. oil.

2nd 24 hours after acid 26 Barrels

FORMATION AND CASING RECORD

Formation	Top	Bottom	Top Pay	Bottom Pay	Remarks	Casing	
						Size	Set at
Stray	1253		1256	1265	2,470,000 Gauged; Cu. Ft. Gas.	10"	369
Marshall	1315	S.L.M.				8-1/4"	942
Red Rock	1415	1487				6-5/8"	1496
Sunbury	2462	S.L.M.				5-3/16"	3669
Berea	2494	"					
Antrim	2511						
Traverse Lime	3004	S.L.M.					
Dundee	3652	"		3703	Show oil and gas.		
			3706	3709			
Total Depth		3709					

Remarks

Signed D. C. Shackelford