



Western Michigan University  
ScholarWorks at WMU

---

Legacy Scout Tickets from Pure Oil Company

---

8-20-2021

**MGRRE\_PureOilScoutTickets\_Tillman\_1\_21073060380000**

MGRRE

*Western Michigan University*

Follow this and additional works at: <https://scholarworks.wmich.edu/pure>



Part of the Geology Commons

---

#### **WMU ScholarWorks Citation**

MGRRE, "MGRRE\_PureOilScoutTickets\_Tillman\_1\_21073060380000" (2021). *Legacy Scout Tickets from Pure Oil Company*. 3467.

<https://scholarworks.wmich.edu/pure/3467>

This Document is brought to you for free and open access via ScholarWorks at WMU. It has been accepted for inclusion in Legacy Scout Tickets from Pure Oil Company by an authorized administrator of ScholarWorks at WMU. See the National Digital Catalogue - Science Base Catalogue for more collections submitted by MGRRE.



---

**MGRRE\_PureOilScoutTickets\_Tillman\_1\_21073060380000**

API 21073060380000

Permit Number 6038

Lease Name Tillman

Well Number 1

County Isabella

Township 15N

Range 05W

Section 23

2021 DEQ or Pure co\_name Teater, C, W.

Pure Number 776

Latitude 43.67915

Longitude -84.87982

DATE April 21, 1939

LOCATION REPORT

No. 776

STATE Michigan COUNTY Isabella DIST. Nottawa TWP. Nottawa SEC. 23 TOWN 15 N RANGE 5 W

WELL No. 1 (SERIAL No. 776) FARM Tillman ACRES

NAME OF STREAM OR WATERS QUADRANGLE NE-SE-NW

OPERATOR C. W. Teater Map Nottawa Township, Isabella County

C. W. Teater

Nottawa - Isa.

Feet from North Line of Farm

320 330 " " East " " "

990 990 " " South " " "

320 330 " " West " " "

Feet from North Line of Section

330 330 " " East " " "

990 990 " " South " " "

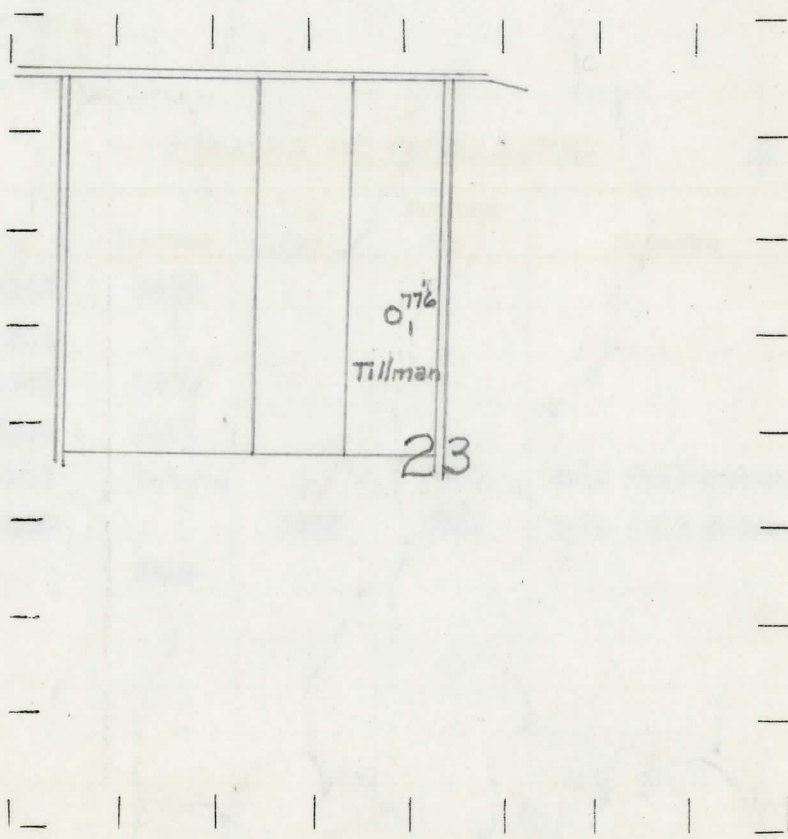
" " West " " "

378  
Sp 4-13-39

LEGEND

- LOCATION
- ⊕ RIG
- ⊕ DRILLING
- ☀ GAS WELL
- OIL WELL
- SMALL OIL WELL
- ⊙ DRY HOLE
- ⊙ DRY SHOWING OIL
- ⊙ DRY SHOWING GAS
- ⊙ ABANDONED LOCATION
- ☀ ABANDONED GAS WELL
- ABANDONED OIL WELL

NOTE: Below make tracing from map, (when no map is obtainable make sketch) showing farm, center of section, this location with measurements and also wells, dry holes, or other locations in the vicinity of this location.



REMARKS:

SIGNED

R. L. Y.

Superintendent or Foreman.

COMPLETION RECORD OF WELLS DRILLED BY OTHER OPERATORS

Michigan Producing Division

Date **June 22, 1939** No. **776**  
 State **Mich.** County **Isabella** ~~Rixix~~ Twp. **Nottawa** Sec. **23** Twp. **15 N** Rge. **5 W**  
 Well No. **1** (Serial No.) ~~(XXXXXXXXXX)~~ **776** Farm **Tillman** Acres \_\_\_\_\_  
 Operator **C. W. Teater** Information secured ~~from~~ **Scouting Department** By \_\_\_\_\_  
 Date well started **4-13-39** Dated well completed **6-17-39** Elevation **855.7**

PRODUCTION RECORD

1st 24 hours natural **Dry Hole**  
 2nd 24 hours natural \_\_\_\_\_  
 Date of shot \_\_\_\_\_ No. of quarts \_\_\_\_\_ From \_\_\_\_\_ to \_\_\_\_\_ From \_\_\_\_\_ to \_\_\_\_\_  
 Date of acid \_\_\_\_\_ No. of gallons \_\_\_\_\_  
 shot \_\_\_\_\_  
 1st 24 hours after acid \_\_\_\_\_  
 shot \_\_\_\_\_  
 2nd 24 hours after acid \_\_\_\_\_

FORMATION AND CASING RECORD

Formation	Top	Bottom	Top Pay	Bottom Pay	Remarks	Casing	
						Size	Set at
Stray	1435	1455				10"	474
Marshall	1502					8-1/4"	920
Red Rock	1583	1670				6-5/8"	1728
Antrim	2638	3171				5-3/16"	3822
Traverse Lime	3198	S.L.M.		3310	Hole full water.		
Dundee	3820		3848	3853	Hole full water.		
Total Depth		3853					

Remarks **2559' C.T.M. equals 2555' S.L.M.; 3283' C.T.M. equals 3286' S.L.M.; 3765' C.T.M. equals 3757' S.L.M.**

Signed **D. C. Shackelford**