



Western Michigan University
ScholarWorks at WMU

Legacy Scout Tickets from Pure Oil Company

8-20-2021

**MGRRE_PureOilScoutTickets_Ramey, Thomas et
al_1_21073063250000**

MGRRE

Western Michigan University

Follow this and additional works at: <https://scholarworks.wmich.edu/pure>



Part of the Geology Commons

WMU ScholarWorks Citation

MGRRE, "MGRRE_PureOilScoutTickets_Ramey, Thomas et al_1_21073063250000" (2021). *Legacy Scout Tickets from Pure Oil Company*. 3468.

<https://scholarworks.wmich.edu/pure/3468>

This Document is brought to you for free and open access via ScholarWorks at WMU. It has been accepted for inclusion in Legacy Scout Tickets from Pure Oil Company by an authorized administrator of ScholarWorks at WMU. See the National Digital Catalogue - Science Base Catalogue for more collections submitted by MGRRE.



MGRRE_PureOilScoutTickets_Ramey, Thomas et al_1_21073063250000

API 21073063250000

Permit Number 6325

Lease Name Ramey, Thomas et al

Well Number 1

County Isabella

Township 16N

Range 03W

Section 28

2021 DEQ or Pure co_name Summit Petroleum Corporation

Pure Number 778

Latitude 43.7525963

Longitude -84.6860849

THE PURE OIL COMPANY
COMPLETION RECORD OF WELLS BY OTHER OPERATORS
LOCATION REPORT

DATE June 15, 1939

No. 778

STATE Michigan COUNTY Isabella DIST. Wise TWP. Wise SEC. 28 TOWN. 16 N RANGE 3 W
WELL No. 1 (SERIAL No. 778) FARM Thomas Ramey, et al. ACRES

NAME OF STREAM OR WATERS _____ QUADRANGLE NW-SW-NW

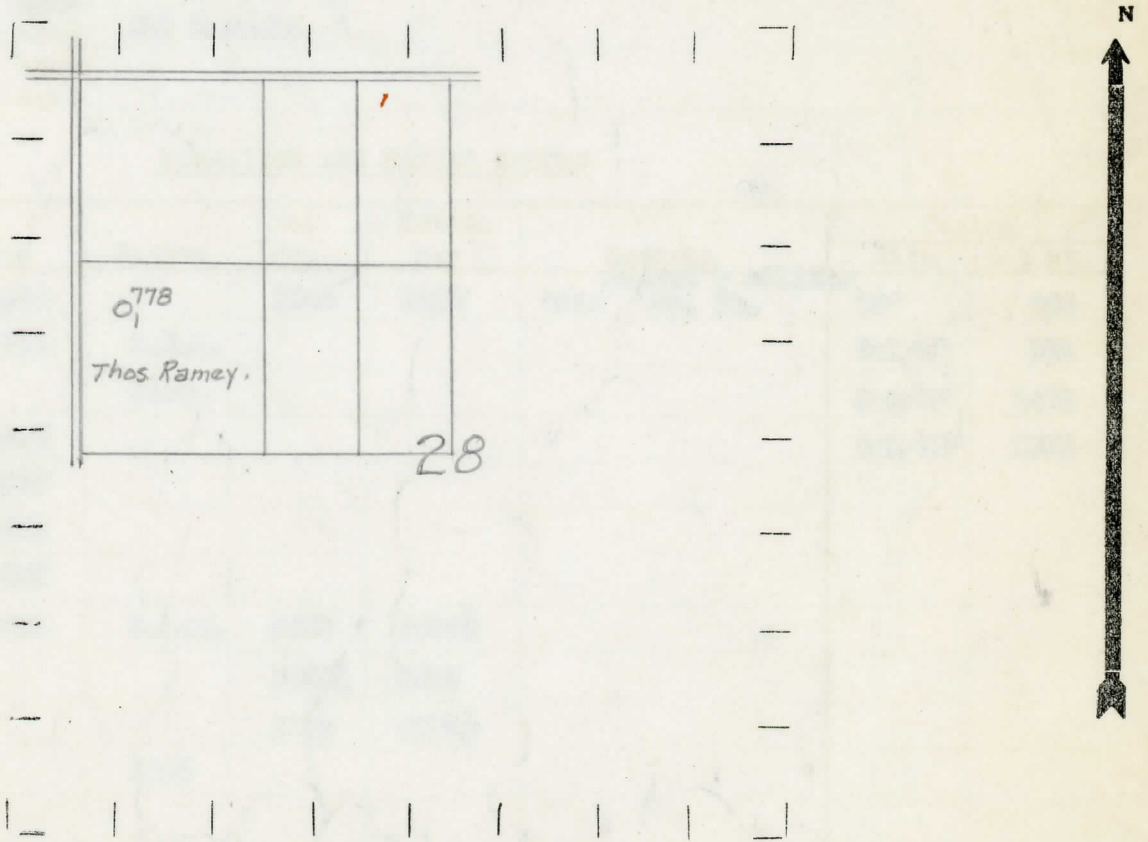
OPERATOR Cities Service Oil Company Map Wise Township, Isabella County
3380 Cities Service Oil Co. Wise-Isa.

Feet from North Line of Farm
" " East " " "
" " South " " "
3330 " " West " " "
Feet from North Line of Section
" " East " " "
9930 " " South " 1/4 "
3330 " " West " " "

LEGEND

- LOCATION
- ⊙ RIG
- ⊕ DRILLING
- ☀ GAS WELL
- OIL WELL
- SMALL OIL WELL
- ⊖ DRY HOLE
- ⊕ DRY SHOWING OIL
- ☀ DRY SHOWING GAS
- ⊖ ABANDONED LOCATION
- ☀ ABANDONED GAS WELL
- ABANDONED OIL WELL

NOTE: Below make tracing from map, (when no map is obtainable make sketch) showing farm, center of section, this location with measurements and also wells, dry holes, or other locations in the vicinity of this location.



REMARKS:

SIGNED

R. A. Y.

Superintendent or Foreman.

Michigan Producing Division

Date **August 24, 1939** No. **778**
 State **Mich.** County **Isabella** Dist. **Wise**
 (Serial No.) Twp. **Wise** Sec. **28** Twp. **16 N** Rge. **3 W**
 Well No. **1** (County No.) **778** Farm **Thos. Ramey, et al** Acres
 Operator **Cities Service Oil Company** Information secured ~~from~~ **By Scouting Department**
 Date well started **6-21-39** Dated well completed **8-11-39** Elevation **764.5**

PRODUCTION RECORD

1st 24 hours natural **98 Barrels (Swabbed and flowed.)**
 2nd 24 hours natural
 Date of shot No. of quarts From to From to
 Date of acid **8-15-39** No. of gallons **1000**
 1st 24 hours after acid ~~shot~~ **231 Barrels**
 shot
 2nd 24 hours after acid

FORMATION AND CASING RECORD

Formation	Top	Bottom	Top Pay	Bottom Pay	Remarks	Casing	
						Size	Set at
Stray	1245		1248	1258	Gas: Gauged 5 million cu. ft.	10"	369
Marshall	1311	C.T.M.				8-1/4"	931
Red Rock		1480				6-5/8"	1502
Sunbury	2469					5-3/16"	3672
Berea	2503						
Antrim	2521						
Traverse Line	3005						
Dundee	3653	S.L.M.	3693	3694 1/2			
			3695 1/2	3698			
			3703	3704 1/2			
Total Depth		3705					

Remarks **Now flowing 100 bbls. per day. 3662' C.T.M. equals 3672' S.L.M.**

Signed **D. C. Shackelford**