



Western Michigan University
ScholarWorks at WMU

Legacy Scout Tickets from Pure Oil Company

8-20-2021

MGRRE_PureOilScoutTickets_Yuncker_1_21073064040000

MGRRE

Western Michigan University

Follow this and additional works at: <https://scholarworks.wmich.edu/pure>



Part of the Geology Commons

WMU ScholarWorks Citation

MGRRE, "MGRRE_PureOilScoutTickets_Yuncker_1_21073064040000" (2021). *Legacy Scout Tickets from Pure Oil Company*. 3474.

<https://scholarworks.wmich.edu/pure/3474>

This Document is brought to you for free and open access via ScholarWorks at WMU. It has been accepted for inclusion in Legacy Scout Tickets from Pure Oil Company by an authorized administrator of ScholarWorks at WMU. See the National Digital Catalogue - Science Base Catalogue for more collections submitted by MGRRE.



MGRRE_PureOilScoutTickets_Yuncker_1_21073064040000

API 21073064040000

Permit Number 6404

Lease Name Yuncker

Well Number 1

County Isabella

Township 15N

Range 05W

Section 14

2021 DEQ or Pure co_name Cryden Petroleum Corporation and Fortney Oil Company

Pure Number 785

Latitude 43.69003

Longitude -84.87601

THE PURE OIL COMPANY

DATE August 24, 1939

LOCATION REPORT

No. 785

STATE Michigan COUNTY Isabella DIST. Nottawa TWP. Nottawa SEC. 14 TOWN 15 N RANGE 5 W
WELL No. 1 (SERIAL No. 785) FARM Wm. YUNCKER

NAME OF STREAM OR WATERS QUADRANGLE C 15 N 16 W SE

OPERATOR Cryden Petroleum Corp., et al Map Nottawa Township, Isabella County

3330 Feet from North Line of Farm
66660 " " East " " "

66660 " " South " " "
66660 " " West " " "

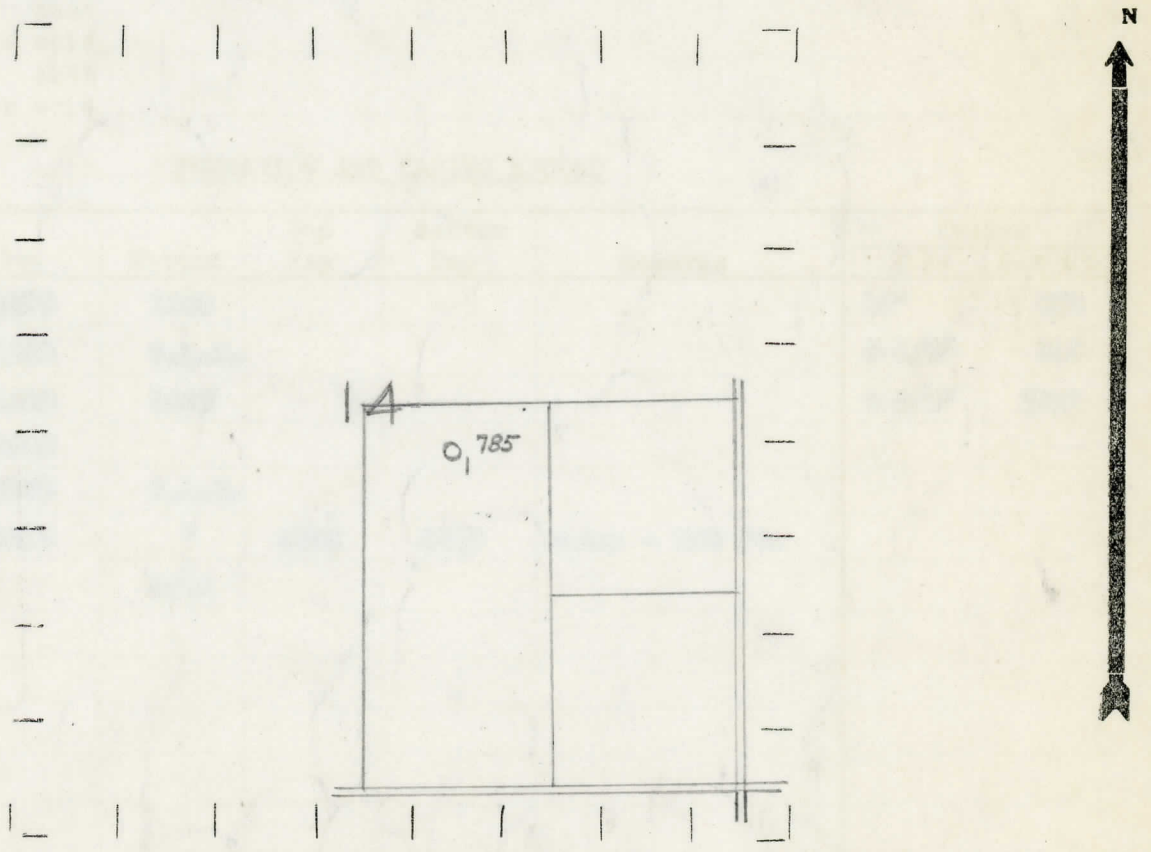
3330 Feet from North Line of Section 1/4
" " East " " "

66660 " " South " " "
66660 " " West 1/4 " "

LEGEND

- LOCATION
- ⊙ RIG
- ⊕ DRILLING
- ☀ GAS WELL
- OIL WELL
- ⦿ SMALL OIL WELL
- ⊖ DRY HOLE
- ⦿ DRY SHOWING OIL
- ⊖ DRY SHOWING GAS
- ⊖ ABANDONED LOCATION
- ☀ ABANDONED GAS WELL
- ⦿ ABANDONED OIL WELL

NOTE: Below make tracing from map, (when no map is obtainable make sketch) showing farm, center of section, this location with measurements and also wells, dry holes, or other locations in the vicinity of this location.



REMARKS:

SIGNED

Superintendent or Foreman.

COMPLETION RECORD OF WELLS DRILLED BY OTHER OPERATORS

Michigan Producing Division

Date **October 12, 1939** No. **785**
 State **Mich.** County **Isabella** Twp. **Hottawa** Sec. **14** Twp. **15 N** Rge **5 W**
 Well No. **1** (Serial No.) **785** Farm **Wm. Yuncker** Acres
 Operator **Cryden Petroleum Corp., et al** Information secured ~~from~~ **By Scouting Department**
 Date well started **8-21-39** Dated well completed **10-9-39** Elevation **862.0**

PRODUCTION RECORD

1st 24 hours natural **Dry Hole**
 2nd 24 hours natural
 Date of shot No. of quarts From to From to
 Date of acid No. of gallons
 1st 24 hours after acid shot
 2nd 24 hours after acid shot

FORMATION AND CASING RECORD

Formation	Top	Bottom	Top Pay	Bottom Pay	Remarks	Casing	
						Size	Set at
Stray	1478	1500				10"	479
Marshall	1550	S.L.M.				8-1/4"	815
Red Rock	1620	1690				6-5/8"	1703
Antrim	2640						
Traverse Lime	3195	S.L.M.					
Dundee	3819	"	3835	3840	Water - 500 ft.		
Total Depth		3840					

Remarks **1561' C.T.M. equals 1561' S.L.M.; 3389' C.T.M. equals 3395' S.L.M.; 3802' C.T.M. equals 3799' S.L.M.**

Signed **D. C. Shackelford**