



Western Michigan University
ScholarWorks at WMU

Legacy Scout Tickets from Pure Oil Company

8-20-2021

MGRRE_PureOilScoutTickets_Slocum, Albert_1_21073067090000

MGRRE

Western Michigan University

Follow this and additional works at: <https://scholarworks.wmich.edu/pure>



Part of the Geology Commons

WMU ScholarWorks Citation

MGRRE, "MGRRE_PureOilScoutTickets_Slocum, Albert_1_21073067090000" (2021). *Legacy Scout Tickets from Pure Oil Company*. 3475.

<https://scholarworks.wmich.edu/pure/3475>

This Document is brought to you for free and open access via ScholarWorks at WMU. It has been accepted for inclusion in Legacy Scout Tickets from Pure Oil Company by an authorized administrator of ScholarWorks at WMU. See the National Digital Catalogue - Science Base Catalogue for more collections submitted by MGRRE.



MGRRE_PureOilScoutTickets_Slocum, Albert_1_21073067090000

API 21073067090000

Permit Number 6709

Lease Name Slocum, Albert

Well Number 1

County Isabella

Township 16N

Range 03W

Section 28

2021 DEQ or Pure co_name Rowmor Corporation

Pure Number 786

Latitude 43.74722

Longitude -84.67355

THE PURE OIL COMPANY

COMPLETION RECORD OF WELLS BY OTHER OPERATORS

DATE September 7, 1939

LOCATION REPORT

No. 786

STATE Michigan COUNTY Isabella DIST. Wise TWP. Wise SEC. 28 TOWN 16 N RANGE 3 W

WELL No. 1 (SERIAL No. 786) FARM Albert Slocum ACRES

NAME OF STREAM OR WATERS QUADRANGLE SE-NW-SE

OPERATOR Rowmar Corporation Map Wise Township, Isabella County

3330 Feet from North Line of Farm

3330 " " East " " "

3330 " " South " " "

" " West " " "

99990 Feet from North Line of Section

" " East " " "

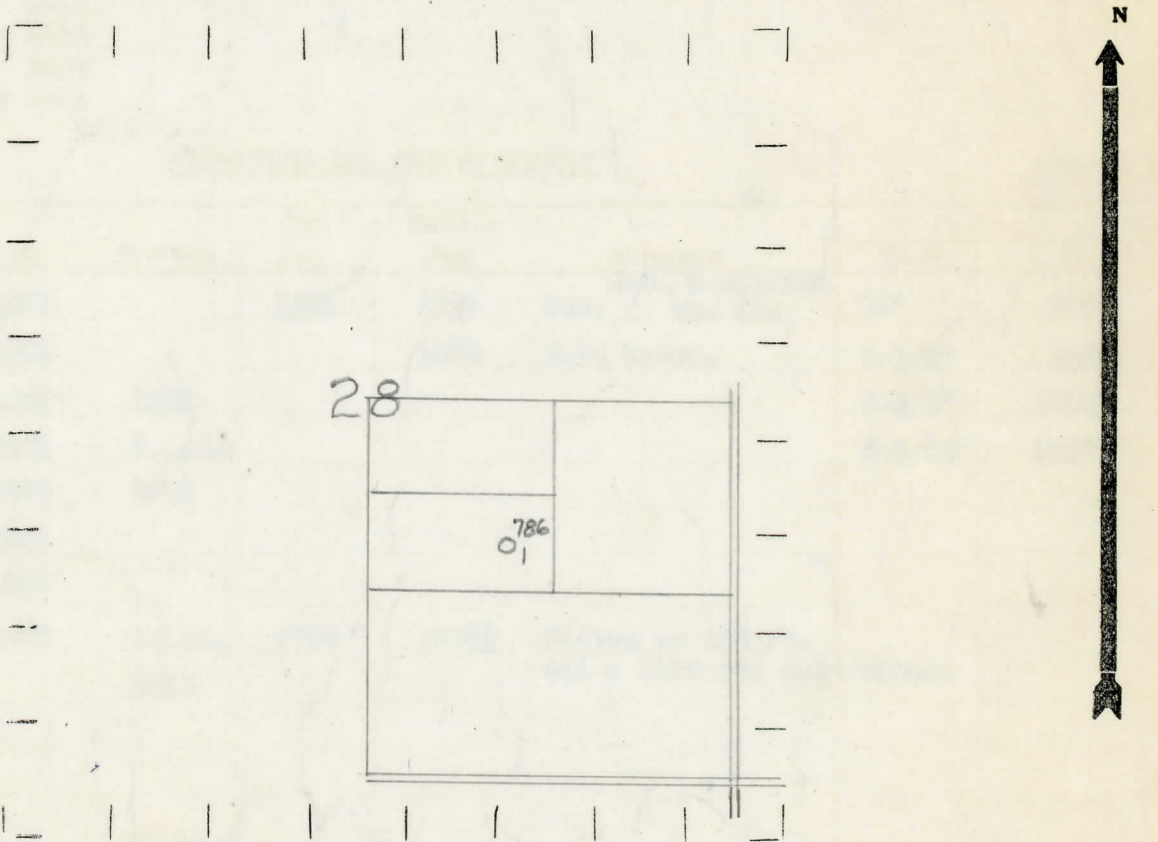
" " South " " "

99990 " " West "1/4"

LEGEND

- LOCATION
- ⊕ DRILLING
- ☀ GAS WELL
- OIL WELL
- ⬮ SMALL OIL WELL
- ⊖ DRY HOLE
- ⊕ DRY SHOWING OIL
- ☀ DRY SHOWING GAS
- ⊖ ABANDONED LOCATION
- ☀ ABANDONED GAS WELL
- ⬮ ABANDONED OIL WELL

NOTE: Below make tracing from map, (when no map is obtainable make sketch) showing farm, center of section, this location with measurements and also wells, dry holes, or other locations in the vicinity of this location.



REMARKS:

SIGNED

Superintendent or Foreman.

Michigan Producing Division

Date **November 29, 1939** No. **786**
 State **Mich.** County **Isabella** Dist. **Wise**
 (Serial No.) Twp. **Wise** Sec. **28** Twp. **16 N** Rge. **3 W**
 Well No. **1** (County No.) **786** Farm **Albert Slocum** Acres
 Operator **Roman Corporation** Information secured ~~from~~ **Scouting Department** By
 Date well started **9-22-39** Dated well completed **10-31-39** Elevation **759.9**

PRODUCTION RECORD

1st 24 hours natural **Dry Hole**
 2nd 24 hours natural
 Date of shot No. of quarts From to From to
 Date of acid No. of gallons
 shot
 1st 24 hours after acid
 shot
 2nd 24 hours after acid

FORMATION AND CASING RECORD

Formation	Top	Bottom	Top Pay	Bottom Pay	Remarks	Casing	
						Size	Set at
Stray	1251		1251	1255	Gas: Est. 5 million cu. ft.	10"	370
Marshall	1305			1308	Salt water.	8-1/4"	950
Red Rock	1429	1503				6-5/8"	1506
Sunbury	2481	S.L.M.				5-3/16"	3667
Berea	2509	2521					
Antrim	2521						
Traverse Line	3005						
Dundee	3660	S.L.M.	3705	3705 1/2	Filled up 100 ft. oil & 1100 ft. salt water.		
Total Depth		3718					

Remarks **1454' C.T.M. equals 1462' S.L.M.; 2488' C.T.M. equals 2484' S.L.M.; 3622' C.T.M. equals 3630' S.L.M.**

Signed **D. C. Shackelford**