



Western Michigan University
ScholarWorks at WMU

Legacy Scout Tickets from Pure Oil Company

8-20-2021

MGRRE_PureOilScoutTickets_Currie, W. E._5_21073074160000

MGRRE

Western Michigan University

Follow this and additional works at: <https://scholarworks.wmich.edu/pure>



Part of the Geology Commons

WMU ScholarWorks Citation

MGRRE, "MGRRE_PureOilScoutTickets_Currie, W. E._5_21073074160000" (2021). *Legacy Scout Tickets from Pure Oil Company*. 3514.

<https://scholarworks.wmich.edu/pure/3514>

This Document is brought to you for free and open access via ScholarWorks at WMU. It has been accepted for inclusion in Legacy Scout Tickets from Pure Oil Company by an authorized administrator of ScholarWorks at WMU. See the National Digital Catalogue - Science Base Catalogue for more collections submitted by MGRRE.



MGRRE_PureOilScoutTickets_Currie, W. E._5_21073074160000

API 21073074160000

Permit Number 7416

Lease Name Currie, W. E.

Well Number 5

County Isabella

Township 16N

Range 04W

Section 5

2021 DEQ or Pure co_name Cartiers Oil Company

Pure Number 828

Latitude 43.80416

Longitude -84.81923

THE PURE OIL COMPANY

DATE March 6, 1940

LOCATION REPORT

No. 828

STATE Michigan COUNTY Isabella DIST. Vernon TWP. Vernon SEC. 5 TOWN 16 N RANGE 4 W

WELL No. 5 (SERIAL No. 828) FARM Wm. E. Currie ACRES

NAME OF STREAM OR WATERS _____ QUADRANGLE SE NE SW
SE NE SW

OPERATOR The Chartiers Oil Company Map Vernon Township, Isabella County
The chartiers oil co Vernon Isabella

_____ Feet from North Line of Farm

_____ " " East " " "

1595.5 " " South " " "

2365.5 " " West " " "

1045.5 Feet from North Line of Section

275.5 " " East " " "

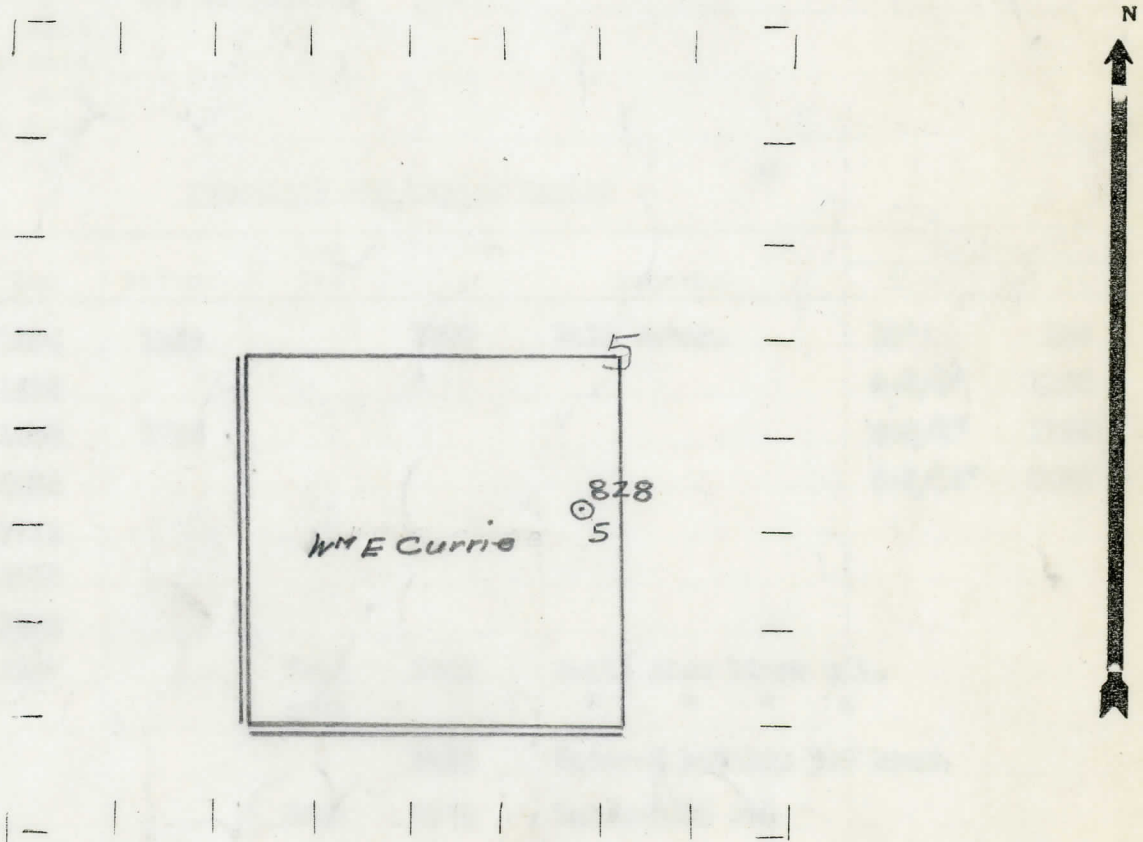
_____ " " South " " "

_____ " " West " " "

LEGEND

- LOCATION
- ⊕ RIG
- ⊕ DRILLING
- ☀ GAS WELL
- OIL WELL
- ⊕ SMALL OIL WELL
- ⊕ DRY HOLE
- ⊕ DRY SHOWING OIL
- ⊕ DRY SHOWING GAS
- ⊕ ABANDONED LOCATION
- ☀ ABANDONED GAS WELL
- ⊕ ABANDONED OIL WELL

NOTE: Below make tracing from map, (when no map is obtainable make sketch) showing farm, center of section, this location with measurements and also wells, dry holes, or other locations in the vicinity of this location.



REMARKS:

SIGNED

Superintendent or Foreman.

COMPLETION RECORD OF WELLS DRILLED BY OTHER OPERATORS

Michigan Producing Division

Date May 1, 1940 No. 828
 State Mich. County Isabella Dist. ~~xxxx~~ Twp. Vernon Sec. 5 Twp. 16 N Rge. 4 W
 Well No. 5 (Serial No.) 828 Farm Wm. E. Currie Acres _____
 Operator Chartiers Oil Company Information secured By Scouting Department
 Date well started 3-12-40 Dated well completed 4-28-40 Elevation 930.3

PRODUCTION RECORD

1st 24 hours natural Dry Hole
 2nd 24 hours natural _____
 Date of shot _____ No. of quarts _____ From _____ to _____ From _____ to _____
 Date of acid _____ No. of gallons _____
 1st 24 hours after acid shot _____
 2nd 24 hours after acid shot _____

FORMATION AND CASING RECORD

Formation	Top	Bottom	Top Pay	Bottom Pay	Remarks	Casing	
						Size	Set at
Stray	1496	1526		1500	Salt water.	10"	558
Marshall	1575					8-1/4"	1148
Red Rock	1668	1746				6-5/8"	1762
Sunbury	2684					5-3/16"	3935
Berea	2714						
Antrim	2732						
Traverse Line	3252						
Dundee	3927		3943	3945	Small show black oil.		
			3951		" " " "		
				3951	Water-2 bailers per hour.		
			3962	3968	Water-2500 ft.		
Total Depth		3968					

Remarks _____

Signed D. C. Shackelford