



Western Michigan University
ScholarWorks at WMU

Legacy Scout Tickets from Pure Oil Company

8-20-2021

MGRRE_PureOilScoutTickets_Allen, C. A._2_21073074300000

MGRRE

Western Michigan University

Follow this and additional works at: <https://scholarworks.wmich.edu/pure>



Part of the Geology Commons

WMU ScholarWorks Citation

MGRRE, "MGRRE_PureOilScoutTickets_Allen, C. A._2_21073074300000" (2021). *Legacy Scout Tickets from Pure Oil Company*. 3515.

<https://scholarworks.wmich.edu/pure/3515>

This Document is brought to you for free and open access via ScholarWorks at WMU. It has been accepted for inclusion in Legacy Scout Tickets from Pure Oil Company by an authorized administrator of ScholarWorks at WMU. See the National Digital Catalogue - Science Base Catalogue for more collections submitted by MGRRE.



MGRRE_PureOilScoutTickets_Allen, C. A._2_21073074300000

API 21073074300000

Permit Number 7430

Lease Name Allen, C. A.

Well Number 2

County Isabella

Township 16N

Range 03W

Section 17

2021 DEQ or Pure co_name Summit Petroleum Corporation

Pure Number 829

Latitude 43.7833452

Longitude -84.6883538

THE PURE OIL COMPANY

DATE March 6, 1940

LOCATION REPORT

No. 829

STATE Michigan COUNTY Isabella DIST. Wise TWP. Wise SEC. 17 TOWN 16 N RANGE 3 W

WELL No. 22 (SERIAL No. 829) FARM C. A. Allen ACRES

NAME OF STREAM OR WATERS QUADRANGLE SE NE NE

OPERATOR Cities Service Oil Company Map Wise Township, Isabella County
990 Cities Service Oil Co. Wise Isabella

330 Feet from North Line of Farm

" " East " " "

" " South " " "

" " West " " "

990 Feet from North Line of Section

330 " " East " 1/4 "

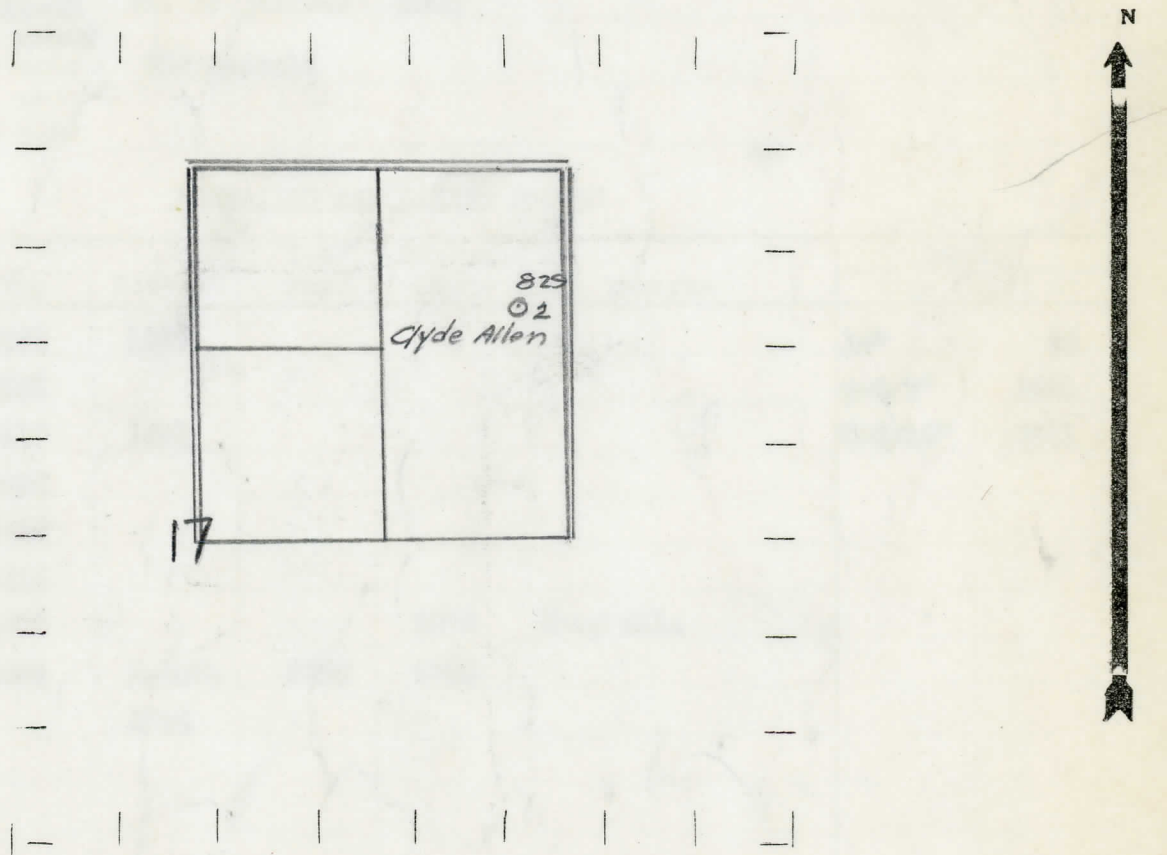
" " South " " "

" " West " " "

LEGEND

- LOCATION
- ⊕ RIG
- ⊕ DRILLING
- ☀ GAS WELL
- OIL WELL
- SMALL OIL WELL
- ⊙ DRY HOLE
- ⊙ DRY SHOWING OIL
- ⊙ DRY SHOWING GAS
- ⊙ ABANDONED LOCATION
- ⊙ ABANDONED GAS WELL
- ⊙ ABANDONED OIL WELL

NOTE: Below make tracing from map, (when no map is obtainable make sketch) showing farm, center of section, this location with measurements and also wells, dry holes, or other locations in the vicinity of this location.



REMARKS:

SIGNED

Superintendent or Foreman.

COMPLETION RECORD OF WELLS DRILLED BY OTHER OPERATORS

Michigan Producing Division

Date April 24, 1940 No. 829
 State Mich. County Isabella ~~District~~ Twp. Wise Sec. 17 Twp. 16 N Rge. 3 W
 (Serial No.)
 Well No. 2 (~~County No.~~) 829 Farm C. A. Allen Acres _____
 Operator Cities Service Oil Company Information secured ~~from~~ Scouting Department By _____
 Date well started 3-15-40 Dated well completed 4-19-40 Elevation 789.4

PRODUCTION RECORD

12
 1st ~~24~~ hours natural 106 Barrels
 2nd 24 hours natural _____
 Date of shot _____ No. of quarts _____ From _____ to _____ From _____ to _____
 Date of acid 4-21-40 No. of gallons 3000
 1st 24 hours after acid 509 Barrels
 shot
 2nd 24 hours after acid _____

FORMATION AND CASING RECORD

Formation	Top	Bottom	Top Pay	Bottom Pay	Remarks	Casing	
						Size	Set at
Stray	1258	1277				14"	46
Marshall	1333					6-5/8"	1521
Red Rock	1420	1491				6-3/16"	3671
Sumbury	2450						
Berea	2488						
Antrim	2510						
Traverse Line	3000			3075	Show oil.		
Dundee	3664	S.L.M.	3708	3724			
Total Depth		3724					

Remarks _____

Signed D. C. Shackelford