



Western Michigan University
ScholarWorks at WMU

Legacy Scout Tickets from Pure Oil Company

8-20-2021

MGRRE_PureOilScoutTickets_Tubbs_2_21073075130000

MGRRE

Western Michigan University

Follow this and additional works at: <https://scholarworks.wmich.edu/pure>



Part of the Geology Commons

WMU ScholarWorks Citation

MGRRE, "MGRRE_PureOilScoutTickets_Tubbs_2_21073075130000" (2021). *Legacy Scout Tickets from Pure Oil Company*. 3523.

<https://scholarworks.wmich.edu/pure/3523>

This Document is brought to you for free and open access via ScholarWorks at WMU. It has been accepted for inclusion in Legacy Scout Tickets from Pure Oil Company by an authorized administrator of ScholarWorks at WMU. See the National Digital Catalogue - Science Base Catalogue for more collections submitted by MGRRE.



MGRRE_PureOilScoutTickets_Tubbs_2_21073075130000

API 21073075130000

Permit Number 7513

Lease Name Tubbs

Well Number 2

County Isabella

Township 16N

Range 03W

Section 17

2021 DEQ or Pure co_name Summit Petroleum Corporation

Pure Number 838

Latitude 43.77606

Longitude -84.69351

THE PURE OIL COMPANY

DATE April 10, 1940

LOCATION REPORT

No. 838

STATE Michigan COUNTY Isabella DIST. Wise TWP. SE SEC. 17 TOWN. 16 N RANGE 3 W
WELL No. 22 (SERIAL No. 838) FARM _____ ACRES _____

NAME OF STREAM OR WATERS _____ QUADRANGLE SE NW SE

OPERATOR Cities Service Oil Company Map Wise Township, Isabella County

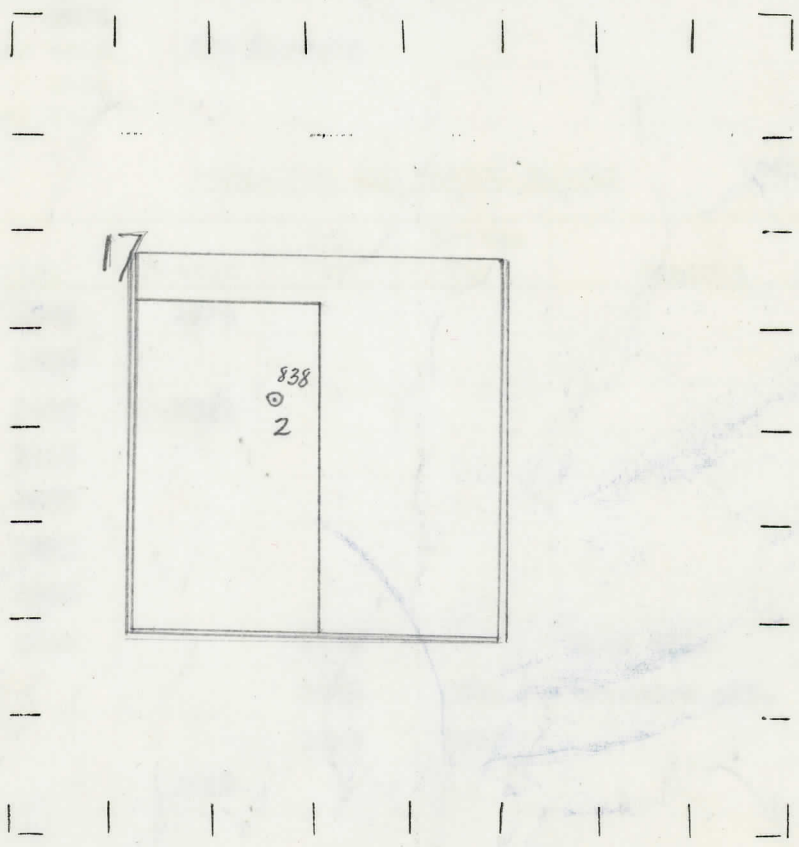
330 330 Feet from North Line of Farm
330 330 " " East " " "
" " South " " "
" " West " " "
990 990 Feet from North Line of Section
" " East " " "
" " South " " "
990 990 " " West " " "

Handwritten sketch of a well location with a circle and a dot, and some lines.

LEGEND

- LOCATION
- ⊙ RIG
- ⊕ DRILLING
- ☀ GAS WELL
- OIL WELL
- SMALL OIL WELL
- ⊙ DRY HOLE
- DRY SHOWING OIL
- ☀ DRY SHOWING GAS
- ⊙ ABANDONED LOCATION
- ☀ ABANDONED GAS WELL
- ABANDONED OIL WELL

NOTE: Below make tracing from map. (when no map is obtainable make sketch) showing farm, center of section, this location with measurements and also wells, dry holes, or other locations in the vicinity of this location.



REMARKS:

SIGNED

W
Subintendent or Foreman.

COMPLETION RECORD OF WELLS DRILLED BY OTHER OPERATORS

Michigan Producing Division

Date May 22, 1940 No. 838
 State Mich. County Isabella Dist. Wise
 (Serial No.) Twp. 17 Sec. 17 Twp. 16 N Rge. 3 W
 Well No. 2 (~~Serial No.~~) 838 Farm Tubbs Acres
 Operator Cities Service Oil Company Information secured ~~from~~ By Scouting Department
 Date well started 4-10-40 Dated well completed 5-17-40 Elevation 785.0

PRODUCTION RECORD

1st 24 hours natural 308 Barrels
 2nd 24 hours natural
 Date of shot No. of quarts From to From to
 Date of acid 5-20-40 No. of gallons 3000
17 ~~3000~~
 1st ~~24~~ hours after acid 583 Barrels
 shot
 2nd 24 hours after acid

FORMATION AND CASING RECORD

Formation	Top	Bottom	Top Pay	Bottom Pay	Remarks	Casing	
						Size	Set at
Stray	1262	1274				14"	46
Marshall	1326					6-5/8"	1520
Red Rock	1419	1501				5-3/16"	3662
Sunbury	2465						
Berea	2482						
Antrim	2490						
Traverse Line	2990						
Dundee	3643		3685		Show oil.		
			3690	3692	Increase oil.		
			3692	3717			
Total Depth		3720					

Remarks

Signed D. C. Shackelford