



Western Michigan University
ScholarWorks at WMU

Legacy Scout Tickets from Pure Oil Company

8-20-2021

MGRRE_PureOilScoutTickets_Burch, Minnie_4_21073076970000

MGRRE

Western Michigan University

Follow this and additional works at: <https://scholarworks.wmich.edu/pure>



Part of the Geology Commons

WMU ScholarWorks Citation

MGRRE, "MGRRE_PureOilScoutTickets_Burch, Minnie_4_21073076970000" (2021). *Legacy Scout Tickets from Pure Oil Company*. 3532.

<https://scholarworks.wmich.edu/pure/3532>

This Document is brought to you for free and open access via ScholarWorks at WMU. It has been accepted for inclusion in Legacy Scout Tickets from Pure Oil Company by an authorized administrator of ScholarWorks at WMU. See the National Digital Catalogue - Science Base Catalogue for more collections submitted by MGRRE.



MGRRE_PureOilScoutTickets_Burch, Minnie_4_21073076970000

API 21073076970000

Permit Number 7697

Lease Name Burch, Minnie

Well Number 4

County Isabella

Township 16N

Range 03W

Section 17

2021 DEQ or Pure co_name Summit Petroleum Corporation

Pure Number 848

Latitude 43.7797493

Longitude -84.7010246

LOCATION REPORT

DATE May 29, 1940

No. 848

STATE Michigan COUNTY Isabella DIST. Wise TWP. Wise PREC. Middle Burch SEC. 17 TOWN 16 RANGE 3 QUADRANGLE SW SE NW

WELL No. 4 (SERIAL No. 848) FARM Middle Burch ACRES _____ OPERATOR Gulf Refining Company Map Wise Township, Isabella County

990 990 Feet from North Line of Farm

“ “ East “ “ “

“ “ South “ “ “

330 330 “ “ West “ “ “

Feet from North Line of Section

990 990 “ “ East “ 1/4 “

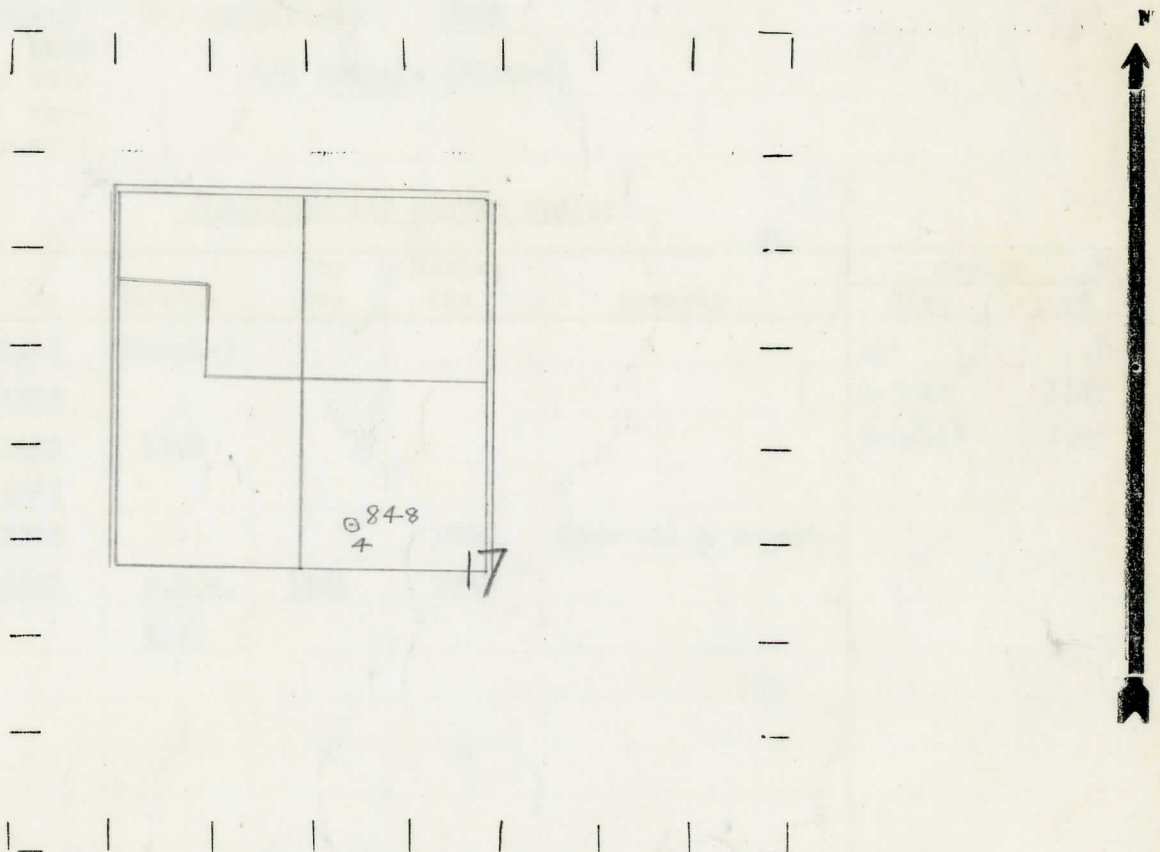
330 330 “ “ South “ “ “

“ “ West “ “ “

LEGEND

- LOCATION
- ⊕ RIG
- ⊕ DRILLING
- ☀ GAS WELL
- OIL WELL
- SMALL OIL WELL
- ⊖ DRY HOLE
- ◆ DRY SHOWING OIL
- ☀ DRY SHOWING GAS
- ⊖ ABANDONED LOCATION
- ☀ ABANDONED GAS WELL
- ABANDONED OIL WELL

NOTE: Below make tracing from map. (when no map is obtainable make sketch) showing farm, center of section, this location with measurements and also wells, dry holes, or other locations in the vicinity of this location.



REMARKS:

SIGNED

W

Superintendent or Foreman.

Michigan Producing Division

Date July 3, 1940 No. 848
 State Mich. County Isabella ~~Distric~~ Twp. Wise Sec. 17 Twp. 16 N Rge. 3 W
 Well No. 4 (Serial No.) (County No.) 848 Farm Minnie Burch Acres
 Operator Gulf Refining Company Information secured ~~from~~ By Scouting Department
 Date well started 5-29-40 Dated well completed 6-25-40 Elevation 781.1

PRODUCTION RECORD

11
 1st ~~24~~ hours natural 55 Barrels (Flowed)
 2nd 24 hours natural
 Date of shot No. of quarts From to From to
 Date of acid 6-27-40 and 6-30-40 No. of gallons 5000
20 ~~24~~ hours after acid 467 Barrels (Flowed) ~~shot~~
 2nd 24 hours after acid shot

FORMATION AND CASING RECORD

Formation	Top	Bottom	Top Pay	Bottom Pay	Remarks	Casing	
						Size	Set at
Stray	1258	(Sample)				14"	43
Marshall	1335					6-5/8"	1520
Red Rock	1423	1508				5-3/16"	3655
Sunbury	2465						
Traverse Lime	3008			3085	Show oil & water.		
Dundee	3653	S.L.M.	3706	3719			
Total Depth		3725					

Remarks 3629' C.T.M. equals 3632' S.L.M.

Signed D. C. Shackelford