



Western Michigan University
ScholarWorks at WMU

Legacy Scout Tickets from Pure Oil Company

8-20-2021

MGRRE_PureOilScoutTickets_Bowman_B-1_21073083530000

MGRRE

Western Michigan University

Follow this and additional works at: <https://scholarworks.wmich.edu/pure>



Part of the Geology Commons

WMU ScholarWorks Citation

MGRRE, "MGRRE_PureOilScoutTickets_Bowman_B-1_21073083530000" (2021). *Legacy Scout Tickets from Pure Oil Company*. 3565.

<https://scholarworks.wmich.edu/pure/3565>

This Document is brought to you for free and open access via ScholarWorks at WMU. It has been accepted for inclusion in Legacy Scout Tickets from Pure Oil Company by an authorized administrator of ScholarWorks at WMU. See the National Digital Catalogue - Science Base Catalogue for more collections submitted by MGRRE.



MGRRE_PureOilScoutTickets_Bowman_B-1_21073083530000

API 21073083530000

Permit Number 8353

Lease Name Bowman

Well Number B-1

County Isabella

Township 16N

Range 04W

Section 27

2021 DEQ or Pure co_name Lupher Drilling Company

Pure Number 885

Latitude 43.75012

Longitude -84.76886

THE PURE OIL COMPANY

DATE January 15, 1941

LOCATION RECORD OF LOCATION REPORT OTHER OPERATORS

No. 885

STATE Michigan COUNTY Isabella DISTRICT Vernon TWP Vernon SEC. 27 TOWN 16 N RANGE 4 W

WELL No. 1 (SERIAL No. 885) FARM Bowman "B" B ACRES

NAME OF STREAM OR WATERS QUADRANGLE SE SE NE

OPERATOR Lupher Drilling Company Map Vernon Township, Isabella County

Lupher Drilling Co.

Vernon - Isabella

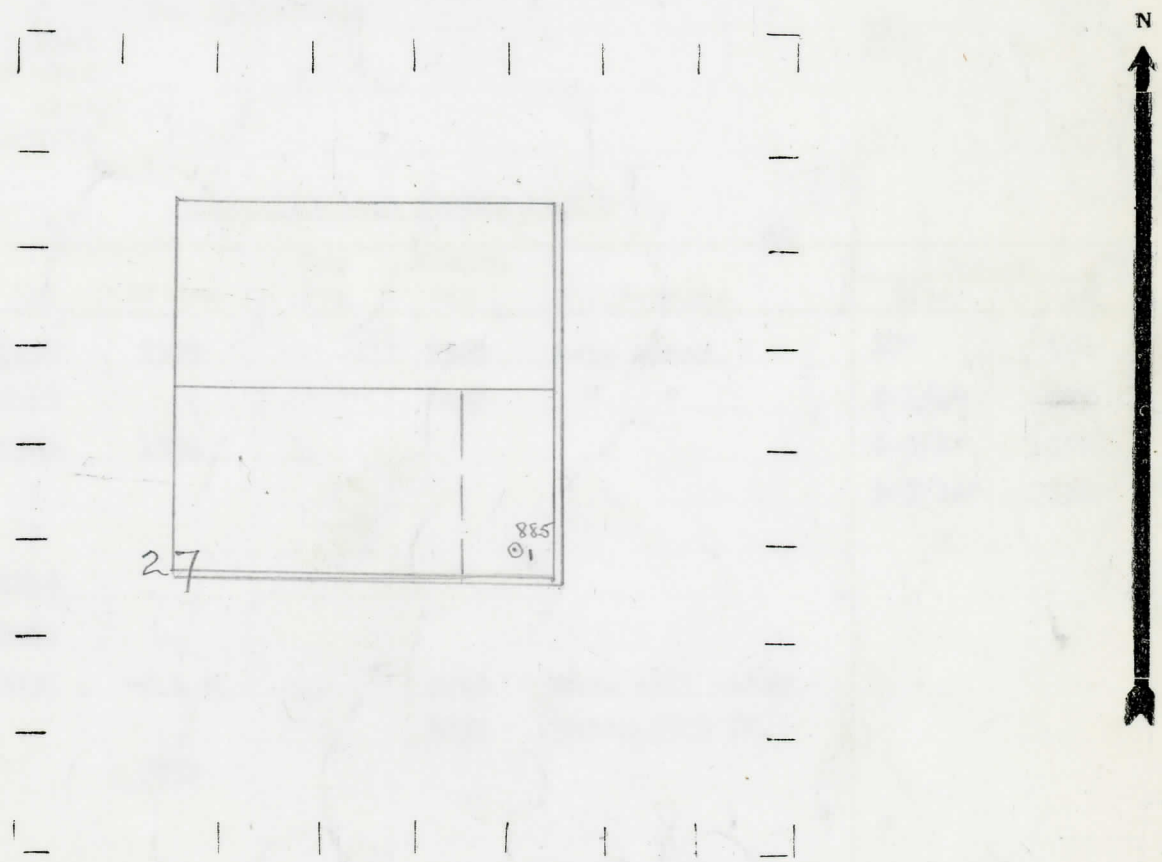
Feet from North Line of Farm	
330	330
195	195

Feet from North Line of Section	
330	330
195	195

Sp 1-10-41

- LEGEND**
- LOCATION
 - ⊕ RIG
 - ⊕ DRILLING
 - ☀ GAS WELL
 - OIL WELL
 - SMALL OIL WELL
 - ⊖ DRY HOLE
 - ⊖ DRY SHOWING OIL
 - ⊖ DRY SHOWING GAS
 - ⊖ ABANDONED LOCATION
 - ☀ ABANDONED GAS WELL
 - ABANDONED OIL WELL

NOTE: Below make tracing from map, (when no map is obtainable make sketch) showing farm, center of section, this location with measurements and also wells, dry holes, or other locations in the vicinity of this location.



REMARKS:

SIGNED

Superintendent or Foreman.

Michigan Producing Division

Date February 19, 1941 No. 885
 State Mich. County Isabella Dist. Vernon
 (Serial No.) Twp. Vernon Sec. 27 Twp. 16 N Rge. 4 W
 Well No. B-1 (County No.) 885 Farm Bowman Acres _____
 Operator Lupher Drilling Company Information secured By Scouting Department
 Date well started 1-10-41 Dated well completed 2-12-41 Elevation 827.0

PRODUCTION RECORD

1st 24 hours natural Dry Hole
 2nd 24 hours natural _____
 Date of shot _____ No. of quarts _____ From _____ to _____ From _____ to _____
 Date of acid _____ No. of gallons _____
 1st 24 hours after acid shot _____
 2nd 24 hours after acid shot _____

FORMATION AND CASING RECORD

Formation	Top	Bottom	Top Pay	Bottom Pay	Remarks	Casing	
						Size	Set at
Stray	1350	1375		1360	Salt water.	10"	422
Marshall	1415			1420	" "	8-1/4"	993
Red Rock	1500	1584				6-5/8"	1596
Sunbury	?					5-3/16"	3731
Berea	?						
Antrim	2545						
Traverse Lime	3060						
Dundee	3731	S.L.M.		3796 3850	Show salt water. Water-2500 ft.		
Total Depth		3850					

Remarks _____

Signed D. C. Shackelford