



Western Michigan University
ScholarWorks at WMU

Legacy Scout Tickets from Pure Oil Company

8-20-2021

**MGRRE_PureOilScoutTickets_Pease
Communitized_1_21073084980000**

MGRRE

Western Michigan University

Follow this and additional works at: <https://scholarworks.wmich.edu/pure>



Part of the Geology Commons

WMU ScholarWorks Citation

MGRRE, "MGRRE_PureOilScoutTickets_Pease Communitized_1_21073084980000" (2021). *Legacy Scout Tickets from Pure Oil Company*. 3572.

<https://scholarworks.wmich.edu/pure/3572>

This Document is brought to you for free and open access via ScholarWorks at WMU. It has been accepted for inclusion in Legacy Scout Tickets from Pure Oil Company by an authorized administrator of ScholarWorks at WMU. See the National Digital Catalogue - Science Base Catalogue for more collections submitted by MGRRE.



MGRRE_PureOilScoutTickets_Pease Communitized_1_21073084980000

API 21073084980000

Permit Number 8498

Lease Name Pease Communitized

Well Number 1

County Isabella

Township 13N

Range 05W

Section 21

2021 DEQ or Pure co_name Michigan Consolidated Gas Company

Pure Number 892

Latitude 43.50312

Longitude -84.91651

THE PURE OIL COMPANY

DATE March 26, 1941

LOCATION REPORT

No. 892

STATE Michigan

COUNTY Isabella

DIST. TWP. Freemont

SEC. 21

TOWN 13th N

RANGE 5th W

WELL No. 1 (SERIAL No. 892) FARM

PREC. Pease (Comm.)

ACRES

NAME OF STREAM OR WATERS

QUADRANGLE SE SE NW

OPERATOR Belvidere Oil Company

Map Freemont Township, Isabella County

1305 1305 Feet from North Line of Farm

" " East " " "

" " South " " "

1120 1120 " " West " " "

Feet from North Line of Section

200 200 " " East 1/4 "

15 15 " " South " " "

" " West " " "

3-9m

LEGEND

○ LOCATION

⊕ RIG

⊕ DRILLING

☀ GAS WELL

● OIL WELL

● SMALL OIL WELL

⊖ DRY HOLE

● DRY SHOWING OIL

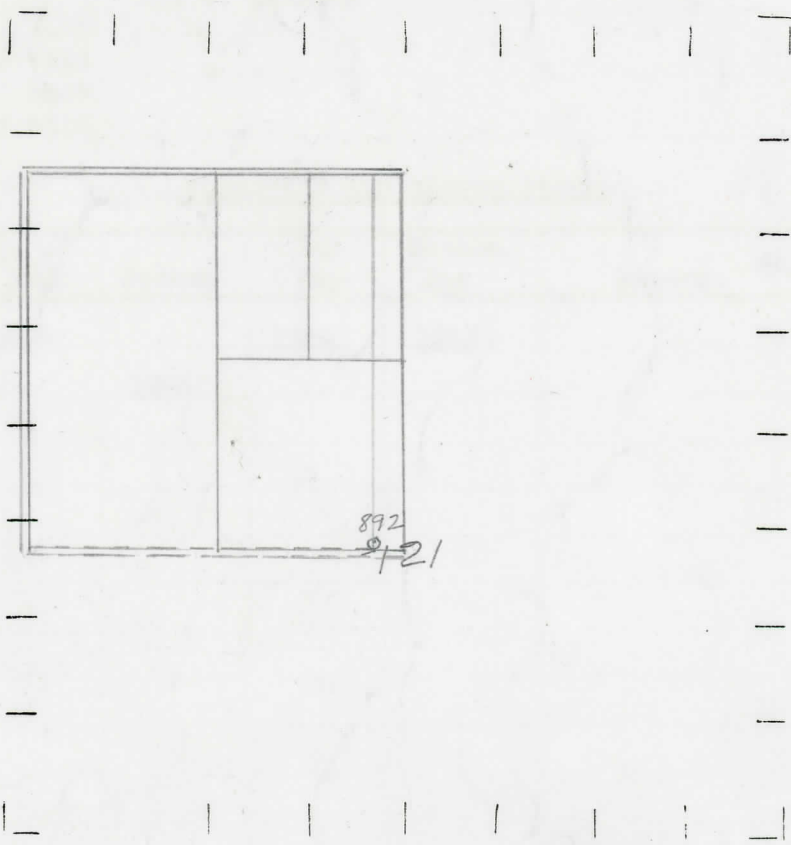
⊖ DRY SHOWING GAS

⊖ ABANDONED LOCATION

☀ ABANDONED GAS WELL

● ABANDONED OIL WELL

NOTE: Below make tracing from map, (when no map is obtainable make sketch) showing farm, center of section, this location with measurements and also wells, dry holes, or other locations in the vicinity of this location.



REMARKS:

.....
.....
.....

SIGNED

W
Subintendent or Foreman.

Michigan Producing Division

Date June 11, 1941 No. 892
 State Mich. County Isabella Dist. Fremont Twp. 13 N Rge. 5 W
 Well No. 1 (Serial No.) 892 Farm Pease (Comm.) Acres _____
 Operator Belvidere Oil Company Information secured From Scouting Department
 Date well started 5-14-41 Dated well completed 6-7-41 Elevation 850.5

PRODUCTION RECORD

1st 24 hours natural 1,430,000 Cu. Ft.
 2nd 24 hours natural _____
 Date of shot _____ No. of quarts _____ From _____ to _____ From _____ to _____
 Date of acid _____ No. of gallons _____
 shot _____
 1st 24 hours after acid _____
 shot _____
 2nd 24 hours after acid _____

FORMATION AND CASING RECORD

Formation	Top	Bottom	Top Pay	Bottom Pay	Remarks	Casing	
						Size	Set at
<u>Stray</u>	<u>1242</u>		<u>1244</u>	<u>1246</u>		<u>8-1/4"</u>	<u>564</u>
<u>Total Depth</u>		<u>1256</u>				<u>6-5/8"</u>	<u>944</u>
						<u>5-3/16"</u>	<u>1225</u>

Remarks _____

Signed D. C. Shackelford