



Western Michigan University
ScholarWorks at WMU

Legacy Scout Tickets from Pure Oil Company

8-20-2021

MGRRE_PureOilScoutTickets_Secord, C._1_21073088050000

MGRRE

Western Michigan University

Follow this and additional works at: <https://scholarworks.wmich.edu/pure>



Part of the Geology Commons

WMU ScholarWorks Citation

MGRRE, "MGRRE_PureOilScoutTickets_Secord, C._1_21073088050000" (2021). *Legacy Scout Tickets from Pure Oil Company*. 3587.

<https://scholarworks.wmich.edu/pure/3587>

This Document is brought to you for free and open access via ScholarWorks at WMU. It has been accepted for inclusion in Legacy Scout Tickets from Pure Oil Company by an authorized administrator of ScholarWorks at WMU. See the National Digital Catalogue - Science Base Catalogue for more collections submitted by MGRRE.



MGRRE_PureOilScoutTickets_Secord, C._1_21073088050000

API 21073088050000

Permit Number 8805

Lease Name Secord, C.

Well Number 1

County Isabella

Township 14N

Range 05W

Section 29

2021 DEQ or Pure co_name L and S. Drilling Company

Pure Number 907

Latitude 43.57534

Longitude -84.93244

THE PURE OIL COMPANY

DATE July 30, 1941

LOCATION REPORT

No. 907

COMPLETION RECORD OF WELLS DRILLED BY OTHER OPERATORS

STATE Michigan COUNTY Isabella DIST. Deerfield TWP. Deerfield SEC. 299 TOWN 14 N RANGE 5 W
WELL No. 1 (SERIAL No. 907) FARM C. Secord ACRES

NAME OF STREAM OR WATERS QUADRANGLE SE SW NE

OPERATOR L. and S. Drilling Company Map Deerfield Township, Isabella County

1270 1270 Feet from North Line of Farm

East " " "

South " " "

1300 1300 West " " "

Feet from North Line of Section

East " " "

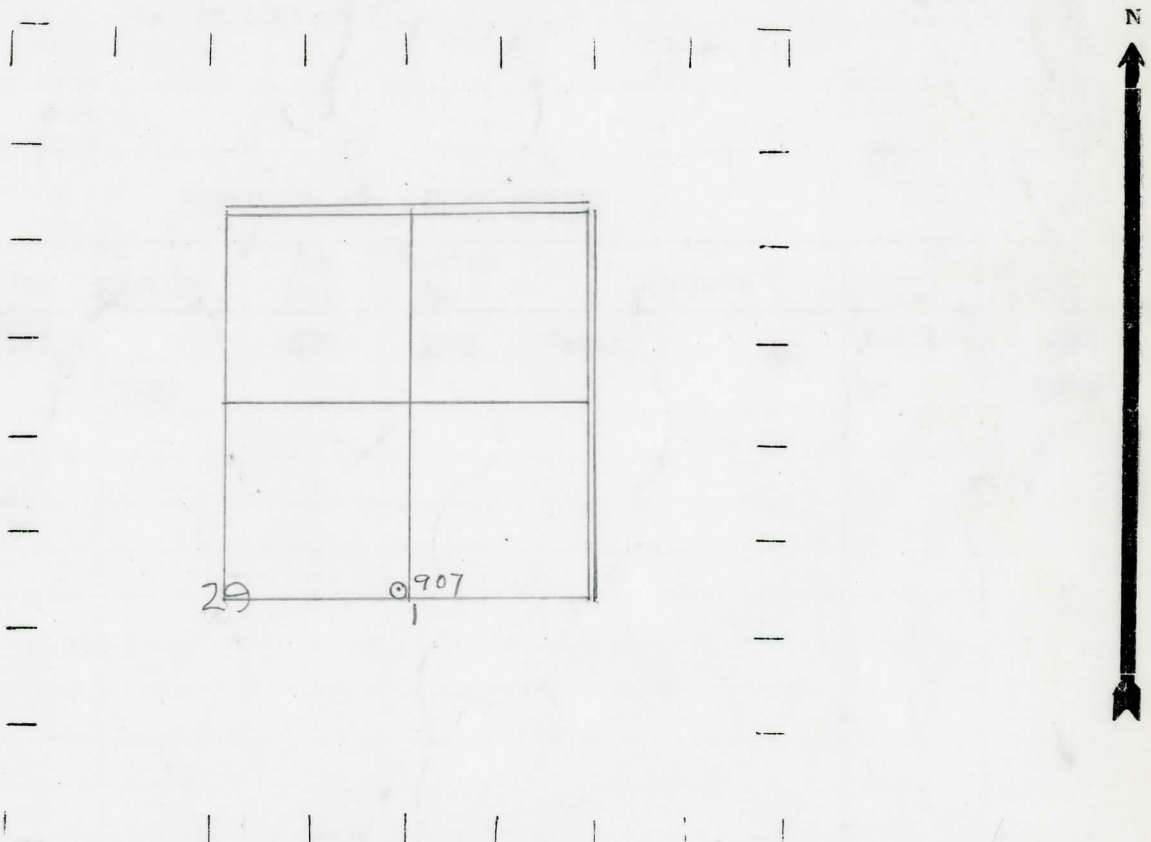
50 50 South " 1/4"

1300 1300 West " " "

LEGEND

- LOCATION
- ⊙ RIG
- ⊕ DRILLING
- ☀ GAS WELL
- OIL WELL
- ⬮ SMALL OIL WELL
- ⊖ DRY HOLE
- ⬮ DRY SHOWING OIL
- ☀ DRY SHOWING GAS
- ⊖ ABANDONED LOCATION
- ☀ ABANDONED GAS WELL
- ⬮ ABANDONED OIL WELL

NOTE: Below make tracing from map, (when no map is obtainable make sketch) showing farm, center of section, this location with measurements and also wells, dry holes, or other locations in the vicinity of this location.



REMARKS:

SIGNED

W

Superintendent or Foreman.

