



Western Michigan University
ScholarWorks at WMU

Legacy Scout Tickets from Pure Oil Company

8-20-2021

MGRRE_PureOilScoutTickets_Swan, W._1_21073088350000

MGRRE

Western Michigan University

Follow this and additional works at: <https://scholarworks.wmich.edu/pure>



Part of the Geology Commons

WMU ScholarWorks Citation

MGRRE, "MGRRE_PureOilScoutTickets_Swan, W._1_21073088350000" (2021). *Legacy Scout Tickets from Pure Oil Company*. 3588.

<https://scholarworks.wmich.edu/pure/3588>

This Document is brought to you for free and open access via ScholarWorks at WMU. It has been accepted for inclusion in Legacy Scout Tickets from Pure Oil Company by an authorized administrator of ScholarWorks at WMU. See the National Digital Catalogue - Science Base Catalogue for more collections submitted by MGRRE.



MGRRE_PureOilScoutTickets_Swan, W._1_21073088350000

API 21073088350000

Permit Number 8835

Lease Name Swan, W.

Well Number 1

County Isabella

Township 15N

Range 03W

Section 4

2021 DEQ or Pure co_name White, B and Rowmor Corporation and Leonard Drilling

Pure Number 908

Latitude 43.72647

Longitude -84.66861

THE PURE OIL COMPANY

DATE August 13, 1941

LOCATION REPORT

No. 908

COMPLETION RECORD OF WELLS DRILLED BY OTHER OPERATORS

STATE Michigan COUNTY Isabella DIST. Denver TWP. Denver SEC. 4 TOWN 15 N RANGE 3 W
WELL No. 1/ (SERIAL No. 908) FARM W. Swan ACRES

NAME OF STREAM OR WATERS QUADRANGLE C E 1/2 NE NE

OPERATOR Burks White, Rowmor Corp. and Leonard Drilling Co. Map Denver Township, Isabella County

660 660 Feet from North Line of Farm

330 330 " " East " " "

" " South " " "

" " West " " "

660 660 Feet from North Line of Section

330 330 " " East " " "

" " South " " "

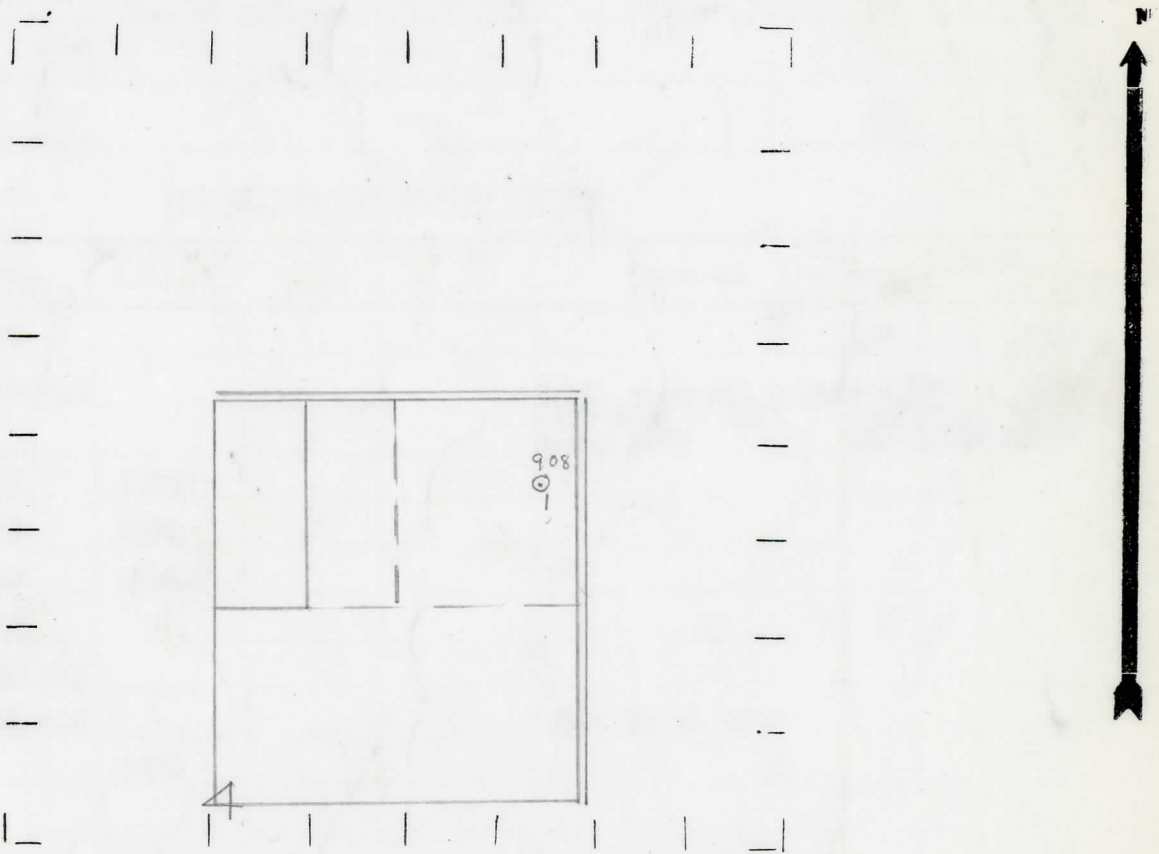
" " West " " "

Leonard Drilling Co.
Rowmor Corp.
Denver - Isabella
425 Sp 8-4-41
10" 354

LEGEND

- LOCATION
- ⊕ RIG
- ⊕ DRILLING
- ☀ GAS WELL
- OIL WELL
- SMALL OIL WELL
- ⊙ DRY HOLE
- ◆ DRY SHOWING OIL
- ⊙ DRY SHOWING GAS
- ⊙ ABANDONED LOCATION
- ☀ ABANDONED GAS WELL
- ABANDONED OIL WELL

NOTE: Below make tracing from map. (when no map is obtainable make sketch) showing farm, center of section, this location with measurements and also wells, dry holes, or other locations in the vicinity of this location.



REMARKS:

SIGNED

W

Superintendent or Foreman.

DATE 10-22-41
 COUNTY Isabella TWP Denver SEC 4 TOWN 15-N RANG 3-W
 NAME OF OPERATOR Burks White et al
 WELL NO. 1 (County No.) 908 FARM W. Swan Acres
 OPERATOR Burks White et al Information secured By Scouting Department
 DATE WELL STARTED 8-4-41 DATE WELL COMPLETED 10-21-41 ELEVATION 750.2

PRODUCTION RECORD

1st 24 hours natural Dry hole
 2nd 24 hours natural
 Date of shot No. of quarts From to From to
 Date of acid No. of gallons
 1st 24 hours after acid shot
 2nd 24 hours after acid shot

FORMATION AND CASING RECORD

Formation	Top	Bottom	Top Pay	Bottom Pay	Remarks	Casing	
						Size	Set at
Brown Dolomite	1130					10"	354'
Michigan Stray	1270 SIM				Small show oil & gas 1276-1282 - Salt water 1282	8-1/4" 6-5/8" RH5-3/16"	948' 1532' 3697'
Marshall	1325	1505					
Sunbury	2500	2510					
Berea	2510	2540					
Antrim	2540						
Traverse Lime	3028 SIM						
Dundee	3681 SIM				500' SW at 3822		
Total Depth		3822					

Remarks 1288 CTM equals 1294 SIM
 3085 CTM equals 3093 SIM

Signed Dean C. Shackelford