



Western Michigan University
ScholarWorks at WMU

Legacy Scout Tickets from Pure Oil Company

8-20-2021

**MGRRE_PureOilScoutTickets_Cairl, George W. et
a_1_21073100610000**

MGRRE

Western Michigan University

Follow this and additional works at: <https://scholarworks.wmich.edu/pure>



Part of the Geology Commons

WMU ScholarWorks Citation

MGRRE, "MGRRE_PureOilScoutTickets_Cairl, George W. et a_1_21073100610000" (2021). *Legacy Scout Tickets from Pure Oil Company*. 3619.

<https://scholarworks.wmich.edu/pure/3619>

This Document is brought to you for free and open access via ScholarWorks at WMU. It has been accepted for inclusion in Legacy Scout Tickets from Pure Oil Company by an authorized administrator of ScholarWorks at WMU. See the National Digital Catalogue - Science Base Catalogue for more collections submitted by MGRRE.



MGRRE_PureOilScoutTickets_Cairl, George W. et al_1_21073100610000

API 21073100610000

Permit Number 10061

Lease Name Cairl, George W. et al

Well Number 1

County Isabella

Township 13N

Range 06W

Section 30

2021 DEQ or Pure co_name Barber, Leslie T.

Pure Number 939

Latitude 43.48143

Longitude -85.06758

THE PURE OIL COMPANY

LOCATION REPORT

Date April 21, 1943

A.F.E. No. _____

Division Michigan Producing District _____

Lease George W. Cairl, et al
George W. Cairl, et al

Acres _____ Lease No. _____ Elevation _____ Well No. 1 (Serial No. 939)

Quadrangle C S 1/2 SE SE Sec. 30 Twp. 13 N Rge. 6 W Twp. Rolland

Survey _____ County Isabella State Michigan

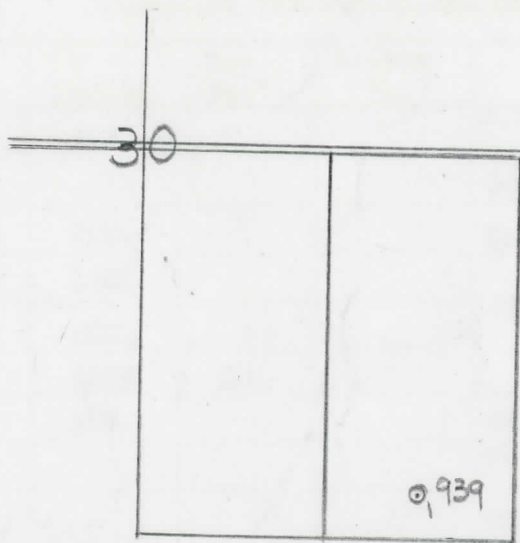
Operator Leslie T. Barber Map Rolland Twp. - Isabella Co.
Leslie T. Barber Rolland Township, Isabella County

660	660	"	"	East	"	"	"
330	330	"	"	South	"	"	"
		"	"	West	"	"	"

660	660	"	"	East	"	"	<u>1/4</u>
330	330	"	"	South	"	"	"
		"	"	West	"	"	"

LEGEND

- Location
- ☀ Gas Well
- Oil Well
- ☀ Gas - Distillate Well
- or ○ Dry Hole
- Dry Showing Oil
- ☀ Dry Showing Gas
- ⊗ Abandoned Location
- ☀ or ☀ Abandoned Gas Well
- or ● Abandoned Oil Well
- or ○ Input Well



Scale _____

Remarks: _____

Submitted by RU _____
Civil Engineer

Approved by _____
Division Manager

Approved by _____
Vice-President - General Manager

COMPLETION RECORD OF WELLS DRILLED BY OTHER OPERATORS

Michigan Producing Division

Date June 30, 1943 No. 939
 State Mich. County Isabella Dist. Rolland Twp. 13 N Rge. 6 W
 Well No. 1 (County No.) 939 Farm Geo. W. Cairl, et al Acres _____
 Operator Leslie T. Barber Information secured from Scouting Department
 Date well started 4-30-43 Date well completed 6-27-43 Elevation 992.7

PRODUCTION RECORD

Dry Hole
 1st 24 hours natural _____
 2nd 24 hours natural _____
 Date of shot _____ No. of quarts _____ From _____ to _____ From _____ to _____
 Date of acid _____ No. of gallons _____
 1st 24 hours after acid shot _____
 2nd 24 hours after acid shot _____

FORMATION AND CASING RECORD

Formation	Top	Bottom	Top Pay	Bottom Pay	Remarks	Casing	
						Size	Set at
Brown Dolomite	1235	SLM.			H.F.W. 702-721.	10"	662
Stray	1310				Good show gas 1310.	8-1/4"	1040
Marshall	1314	SLM.			Salt water 1340.	6-5/8"	1615
Red Rock	1361	1561					
Berea	2535	SLM.					
Antrim	2542	3035	SLM.				
Traverse Lime	3058	SLM.			Salt water 3175-80. (2 ba. per hour)		
Dundee	3583				Small show salt water 3620-3625. 300 ft. salt water 3625-3639. - 2700 ft. salt water at 3660.		
Total Depth		3678					

Remarks 1305' CTM equals 1310' SLM; 2502' CTM equals 2505' SLM; 3058' CTM equals 3058' SLM; 3599' CTM equals 3602' SLM.

Signed D. C. Shackelford