



Western Michigan University
ScholarWorks at WMU

Legacy Scout Tickets from Pure Oil Company

8-20-2021

MGRRE_PureOilScoutTickets_Rice, et al_1_na

MGRRE

Western Michigan University

Follow this and additional works at: <https://scholarworks.wmich.edu/pure>



Part of the Geology Commons

WMU ScholarWorks Citation

MGRRE, "MGRRE_PureOilScoutTickets_Rice, et al_1_na" (2021). *Legacy Scout Tickets from Pure Oil Company*. 3631.

<https://scholarworks.wmich.edu/pure/3631>

This Document is brought to you for free and open access via ScholarWorks at WMU. It has been accepted for inclusion in Legacy Scout Tickets from Pure Oil Company by an authorized administrator of ScholarWorks at WMU. See the National Digital Catalogue - Science Base Catalogue for more collections submitted by MGRRE.



MGRRE_PureOilScoutTickets_Rice, et al_1_na

API na

Permit Number na

Lease Name Rice, et al

Well Number 1

County Isabella

Township 14N

Range 05W

Section 30

2021 DEQ or Pure co_name Osceola Transportation Co.

Pure Number 951

Latitude 43.5748475

Longitude -84.9569982

THE PURE OIL COMPANY LOCATION REPORT

Date May 17, 1944

A.F.E. No. _____

Division Mich. Producing

District _____ Lease _____

L. Rice et al
L. Rice, et al

Acres _____ Lease No. _____ Elevation _____ Well No. 1 (Serial No. 951)

Quadrangle Center Sec. 30 Twp. 14 N Rge. 5 W Twp. Deerfield

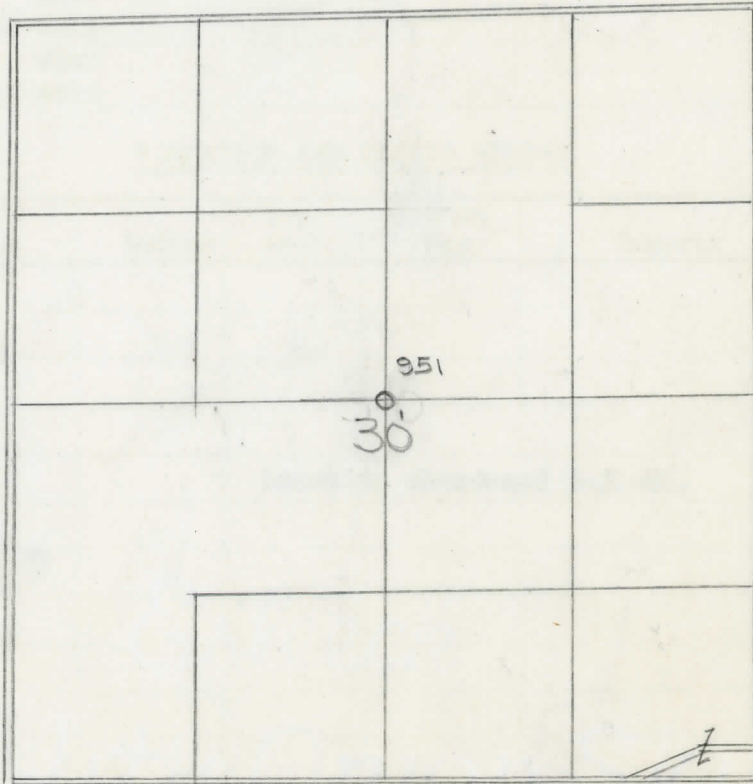
Survey _____ County Isabella State Michigan

Operator Osceola Transportation Company Map Deerfield Twp - Isabella Co
Osceola Transportation Co Deerfield Township, Isabella County

<u>1320</u>	<u>1320</u>	Feet from North Line of Lease
<u>1320</u>	<u>1320</u>	" " East " " "
<u>1320</u>	<u>1320</u>	" " South " " "
<u>1320</u>	<u>1320</u>	" " West " " "
<u>0</u>	<u>0</u>	Feet from North Line of Section <u>1/4</u>
<u>0</u>	<u>0</u>	" " East " " "
<u>0</u>	<u>0</u>	" " South " " "
<u>0</u>	<u>0</u>	" " West " " "

LEGEND

- Location
- ☀ Gas Well
- Oil Well
- ☀ Gas - Distillate Well
- ⊘ or ○ Dry Hole
- ☀ Dry Showing Oil
- ☀ Dry Showing Gas
- ⊘ Abandoned Location
- ⊘ or ☀ Abandoned Gas Well
- or ● Abandoned Oil Well
- ⊘ or ○ Input Well



Remarks: _____

Scale _____

Submitted by _____
Civil Engineer

Approved by _____
Division Manager

Approved by _____
Vice-President - General Manager

COMPLETION RECORD OF WELLS DRILLED BY OTHER OPERATORS

Michigan Producing Division

Date June 1, 1944 No. 951
 State Mich. County Isabella ~~Deerfield~~ Twp. Deerfield Sec. 30 Twp. 14 N Rge. 5 W
 Well No. 1 (~~County No.~~) 951 Farm L. Rice, et al Acres _____
 Operator Osceola Transportation Co. Information secured ~~from~~ ^{By} Scouting Department
 Date well started Not started. Date well completed Not completed. Elevation _____

PRODUCTION BOARD

1st 24 hours natural Location abandoned.
 2nd 24 hours natural _____
 Date of shot _____ No. of quarts _____ From _____ to _____ From _____ to _____
 Date of acid _____ No. of gallons _____
 1st 24 hours after acid shot
 2nd 24 hours after acid shot

FORMATION AND CASING RECORD

Formation	Top	Bottom	Top Pay	Bottom Pay	Remarks	Casing	
						Size	Set at
					<u>Location abandoned 5-31-44.</u>		

Remarks _____

Signed D. C. Shackelford